



Eastney Street, Greenwich, London, SE10 9NR



Eastney Street, Greenwich SE10

Freehold

Nestled on a quiet residential street in the heart of historic Greenwich, this charming two-bedroom period home offers an exceptional opportunity to own a piece of London's maritime heritage.

Key Features

- Period Greenwich home
- Historic Maritime location
- Transport connections nearby
- Council Tax: **D**
- Royal Greenwich Park
- Peaceful residential road
- Close to the River Thames
- EPC: **TBC**

The thoughtfully arranged accommodation flows seamlessly throughout, with natural light enhancing the period charm. The heart of the home extends into a delightful private rear garden, complete with an enclosed decked area that provides the perfect setting for outdoor entertaining and relaxation. This private outdoor sanctuary offers a rare commodity in central Greenwich.

Greenwich village maintains its distinctive character as one of London's most historically significant areas. The cobbled streets, weekend markets, and riverside walks create a unique village atmosphere within the capital. The area's rich maritime heritage is evident throughout, from the Cutty Sark to the National Maritime Museum, while Greenwich Park provides extensive green space for recreation and stunning views across London.

Transport connections place the rest of London within easy reach, with Cutty Sark DLR station and Greenwich railway station providing direct access to Canary Wharf, the City, and central London.







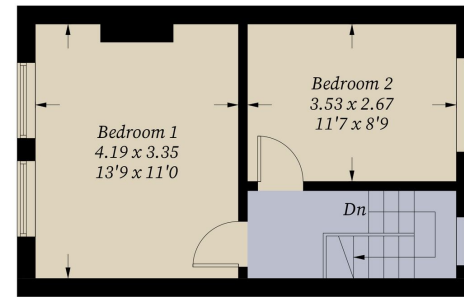


Eastney Street, SE10

Approximate Gross Internal Area = 67.8 sq m / 730 sq ft



Ground Floor



First Floor

Illustration for identification purposes only, measurements are approximate,
not to scale. Fourlabs.co © (ID1236021)

22 College Approach, Greenwich,
London, SE10 9HY
Tel: 020 7399 5595

Sales, Lettings & Property Management

residential.jll.co.uk

