



Amhurst Road, N16

£2,500 Per calendar month

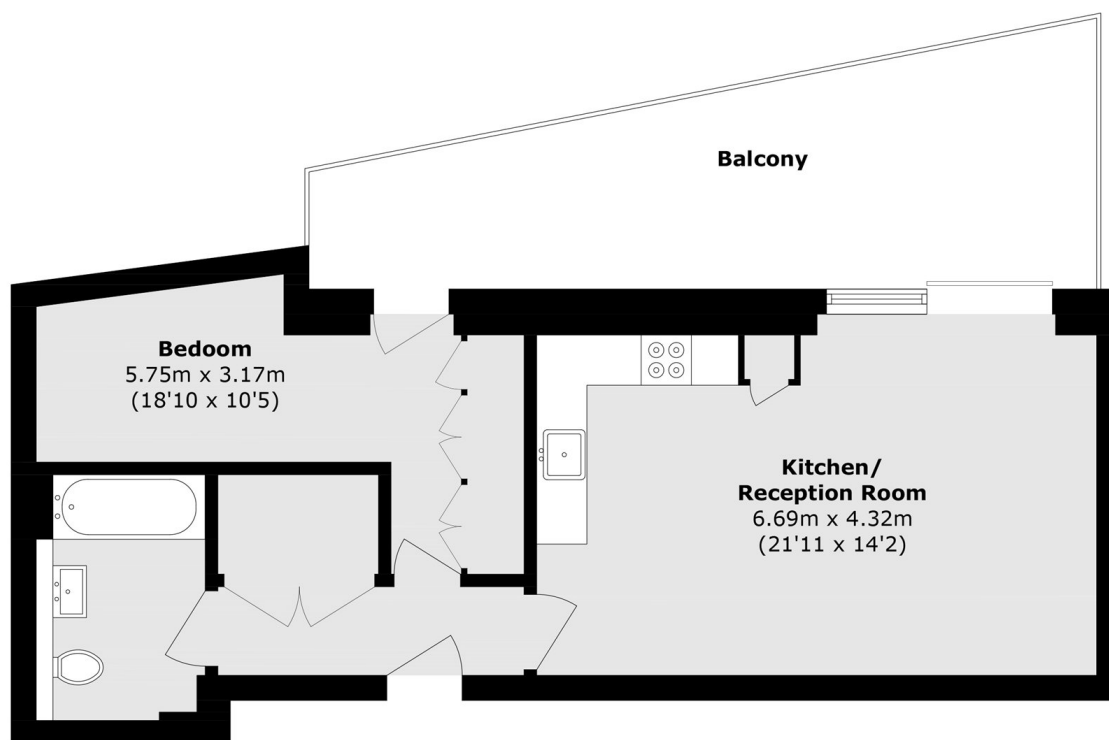
A large one bedroom sub-penthouse apartment with modern & luxurious finishes. Measuring over 840 sq ft internally & externally the property benefits from having a south-west orientation, amazing views, underfloor heating, Siemens appliances and high ceilings. Including secure bike storage & lift access.

Bastion House is centrally located between in Hackney between Stoke Newington and Dalston. The surrounding area has many independent local shops, Stoke Newington farmers' market, and a vibrant array of bars and restaurants on Stoke Newington Church Street & Shacklewell Lane. Rectory Road Overground station is a quarter of a mile away and there are numerous bus routes available on your door step.

Features

- One Double Bedroom
- Modern Throughout
- South-West Private Terrace
- Far Reaching Views
- Boutique Development
- Ideal Location

Amhurst Road, LONDON, N16



Total area (approx.): 56.7 sq. m (610.3 sq. ft)
Balcony area (approx.): 21.8 sq. m (234.7 sq. ft)