



19 TREVANION ROAD LONDON, W14 9BJ

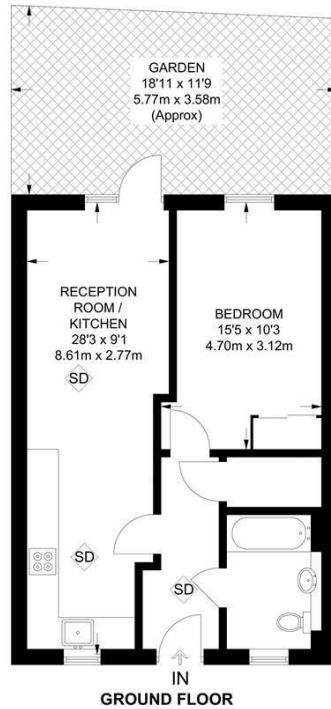
£2,250 PCM

Boasting stunning high ceilings and its own large private garden area, this sleek and stylish one bedroom, ground floor apartment has over 511 SQ FT of internal space and is presented in immaculate condition. The property benefits from a large double bedroom, a good-sized living room and open plan kitchen area, a modern fully fitted bathroom and access to your own private terrace/garden area. The development also has a gated, secure entrance, as well as its own communal garden area, which can be enjoyed by the residents of Trevanion Road.

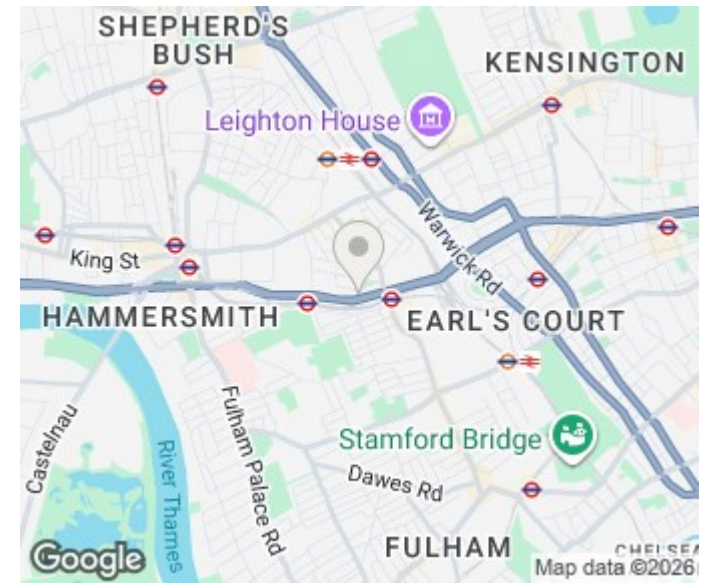
The road itself is extremely well placed in a prime London area and is perfect for accessing a whole host of amenities in Acton, Shepherds Bush and Fulham with West Kensington Station (Underground Services) and Barons Court (Underground) just two hundred yards away from the property.

DouglasPryce

APPROXIMATE FLOOR AREA = 511 SQ FT / 47.5 SQ M
INCLUDING LIMITED USE AREA (4 SQ FT / 0.4 SQ M)



Surveyed and drawn in accordance with the International Property Measurement Standards (IPMS 2: Residential) FOXTONS.CO.UK



Energy Efficiency Rating		
	Current	Potential
Very energy efficient - lower running costs		
(92 plus) A		
(81-91) B		
(69-80) C		
(55-68) D		
(39-54) E		
(21-38) F		
(1-20) G		
Not energy efficient - higher running costs		
England & Wales	EU Directive 2002/91/EC	

Agents Note: Whilst every care has been taken to prepare these particulars, they are for guidance purposes only. All measurements are approximate and are for general guidance purposes only and whilst every care has been taken to ensure their accuracy, they should not be relied upon and potential buyers/tenants are advised to recheck the measurements

Lettings
Verdant Lane
London
SE6 1LF

07887933642
glenn@douglaspryce.co.uk
www.douglaspryce.co.uk

DouglasPryce