



LITTLEBROOK BURNHAM, SL2 2PF

Cameron King is excited to present this charming ground-floor flat in the sought-after Burnham area.

£240,000



1

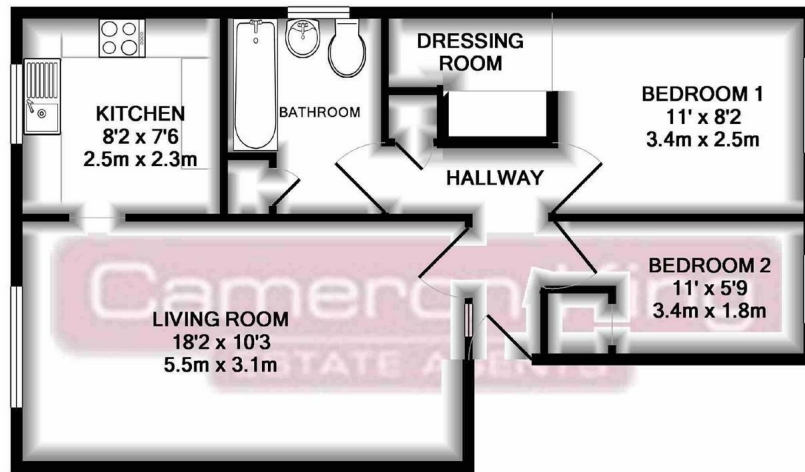


1



2

EPC D



TOTAL APPROX. FLOOR AREA 550 SQ.FT. (51.1 SQ.M.)

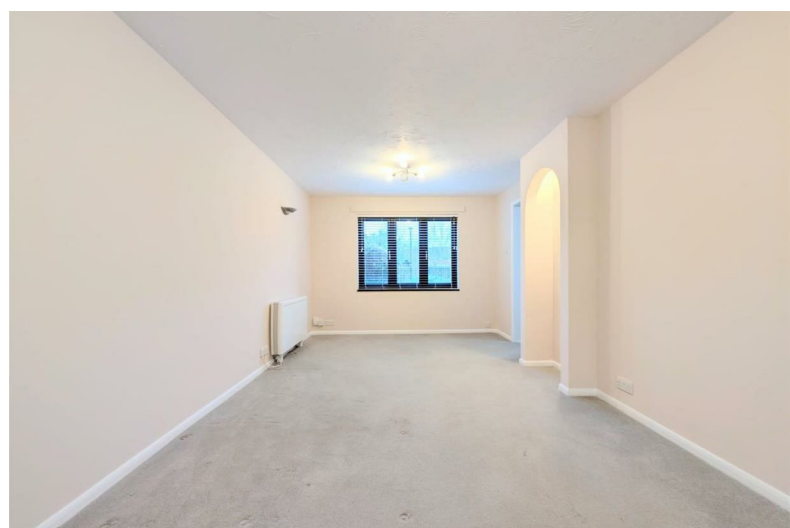
Whilst every attempt has been made to ensure the accuracy of the floor plan contained here, measurements of doors, windows, rooms and any other items are approximate and no responsibility is taken for any error, omission, or mis-statement. This plan is for illustrative purposes only and should be used as such by any prospective purchaser. The services, systems and appliances shown have not been tested and no guarantee as to their operability or efficiency can be given
Made with Metropix ©2019

This lovely property offers a spacious double bedroom with the added bonus of a walk-in wardrobe, along with a cozy single bedroom featuring a built-in wardrobe. The bright and airy lounge provides a comfortable space to relax, and the modern kitchen comes fully fitted with sleek units. The contemporary bathroom has also been recently updated.

Additional highlights include allocated parking, secure entry, double glazing, and electric heating for added convenience and comfort.

Available for sale with no onward chain.

- Sold with no onward Chain
- Within a 5 minute walk of Burnham Rail Station (access across Central London via the Elizabeth Line)
- Easy access to M4 Motorway (Junction 7)
- Secure entry phone system
- Two bedroom ground floor flat
- Close to local shops and schools
- Residents parking
- Within a short walk of Lent Rise School and Burnham Grammar
- Modern kitchen



**cameron
king**
ESTATE AGENTS

411 Bath Road, Slough, SL1 5QL
t: 01628 667442
e: sales@cameronking.co.uk



rightmove

Zoopla

PrimeLocation.com