

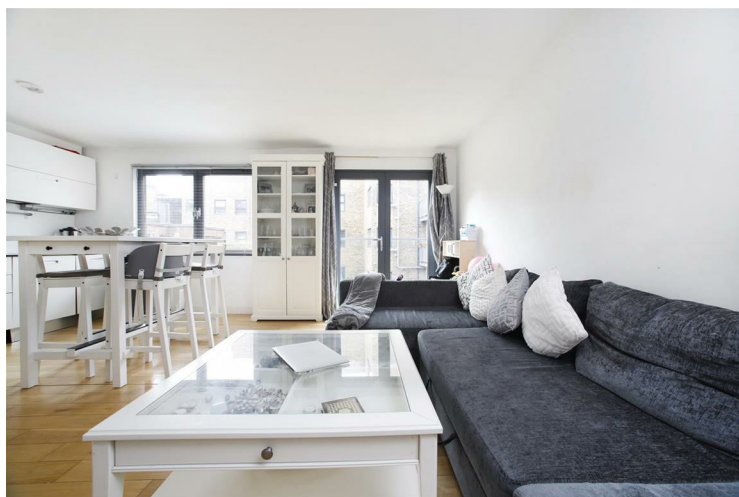
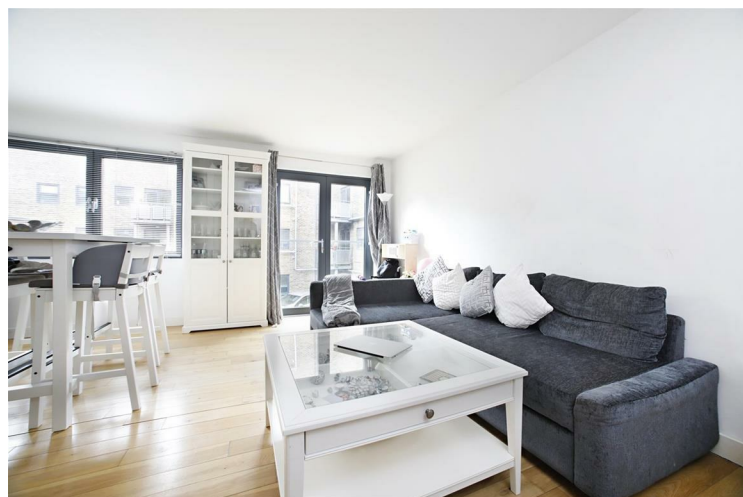


## Brandon Street SE17

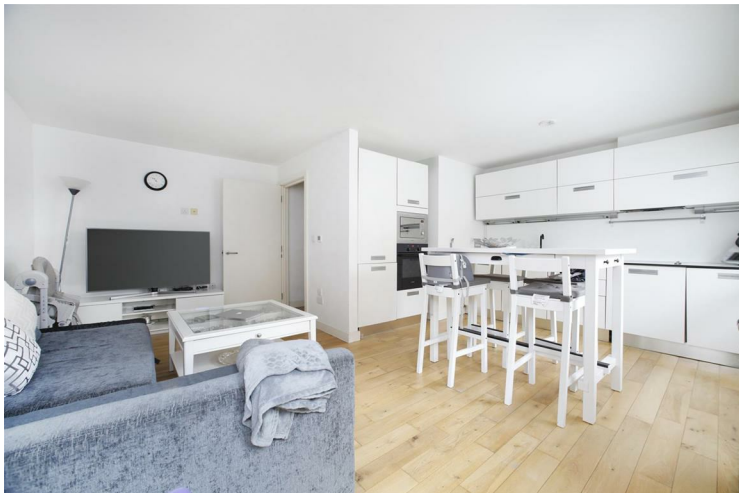
**£1,850 PCM**

Pleased to market this modern open plan one bedroom apartment situated minutes from Elephant & Castle. Situated on the first floor within a private gated development, this property is offered furnished and available to view immediately.

Call the lettings department to reserve a viewing 0207 015 1360.



- NO TENANT FEE'S • Private Parking Available • One Double Bedroom • Open Plan Living • Unfurnished • Modern • Ample Storage Space • Gated Development







Energy Efficiency Rating		
	Current	Potential
Very energy efficient - lower running costs		
(92 plus) <b>A</b>		
(81-91) <b>B</b>		
(69-80) <b>C</b>		
(55-68) <b>D</b>		
(39-54) <b>E</b>		
(21-38) <b>F</b>		
(1-20) <b>G</b>		
Not energy efficient - higher running costs		
<b>England &amp; Wales</b>	EU Directive 2002/91/EC	

Agents Note: Whilst every care has been taken to prepare these particulars, they are for guidance purposes only. All measurements are approximate and are for general guidance purposes only and whilst every care has been taken to ensure their accuracy, they should not be relied upon and potential buyers/tenants are advised to recheck the measurements

Borough Lettings  
230 Borough High Street  
London  
SE1 1JX

020 7015 1360  
enquiries@leonardleese.com  
www.leonardleese.com

