



**POOLE
TOWNSEND**

Mount Pleasant, Barrow-in-furness, LA14 2HR

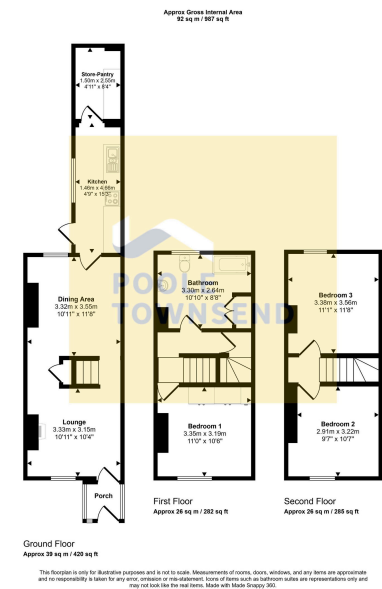
£105,000

3 1 2

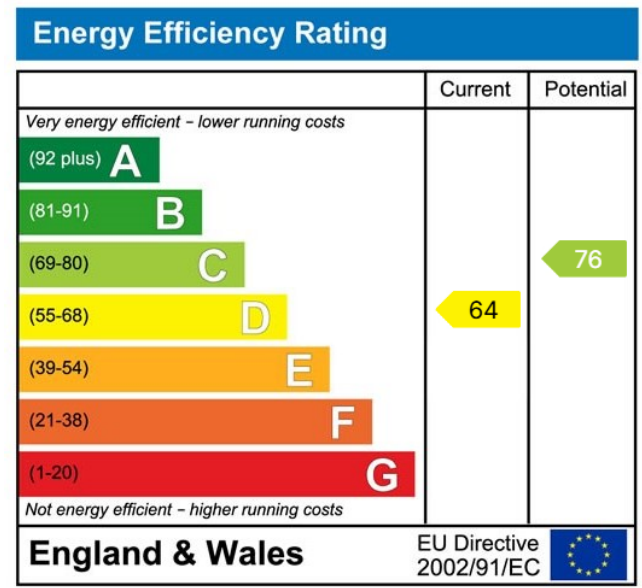


- 3 Bed Terraced House
- Close To Local Amenities
- No Upper Chain
- A Spacious Accommodation
- Double Glazing
- Featuring A Dual-Aspect Living Area
- Adjacent Dining Space
- Well-Appointed Galley Kitchen
- Access to The Rear yard
- Well Suited to a Range Of Buyers





Situated in a convenient central town location within walking distance of shops, supermarkets, eateries, transport links, and a health centre with pharmacy, this forecourt-fronted home offers spacious and versatile accommodation set over three floors. Elevated slightly above the pavement for added privacy, the property features a dual-aspect living area with a feature fireplace, adjacent dining space and a well-appointed galley kitchen with access to a rear yard and useful storage. With three double bedrooms, including two on the upper floor, and a generously sized bathroom, the home is well suited to a range of buyers. Further benefits include gas central heating, double glazing, and no upper chain, making this a practical and appealing purchase.



Visit us at
www.pooletownsend.co.uk
enquiries@pooletownsend.co.uk

We are open
 Monday – Friday 9.00 – 5.00
 Saturday 9.00 – 1.00

Barrow 01229 811811
 Ulverston 01229 588111
 Grange 015395 33316
 Kendal 01539 734455
 Milnthorpe 015395 62044