



LENNOX GARDENS MEWS,  
Knightsbridge SW1X





# LUXURIOUS LIVING IN A SOUGHT-AFTER LOCATION

A stylishly refurbished mews house in Lennox Gardens Mews.



4



3



1

EPC

D



Local Authority: Royal Borough of Kensington and Chelsea

Council Tax band: G

Tenure: Freehold

Guide price: £5,950,000





A beautifully refurbished four-bedroom mews house, discreetly positioned on a private cobbled road in the heart of Knightsbridge. Set across three well-proportioned floors and offering over 2,066 sq. ft. of living and entertaining space, this exceptional home features private parking for up to three cars and a bright, contemporary interior.











The ground floor boasts a spacious reception room with an integrated dining area, a sleek modern kitchen, a guest WC, cloakroom, and a separate utility/laundry room. Upstairs, the full-width principal bedroom suite benefits from a walk-in dressing area and extensive en suite bathroom, while three further bedrooms provide excellent accommodation, two of which have en suite bathrooms.



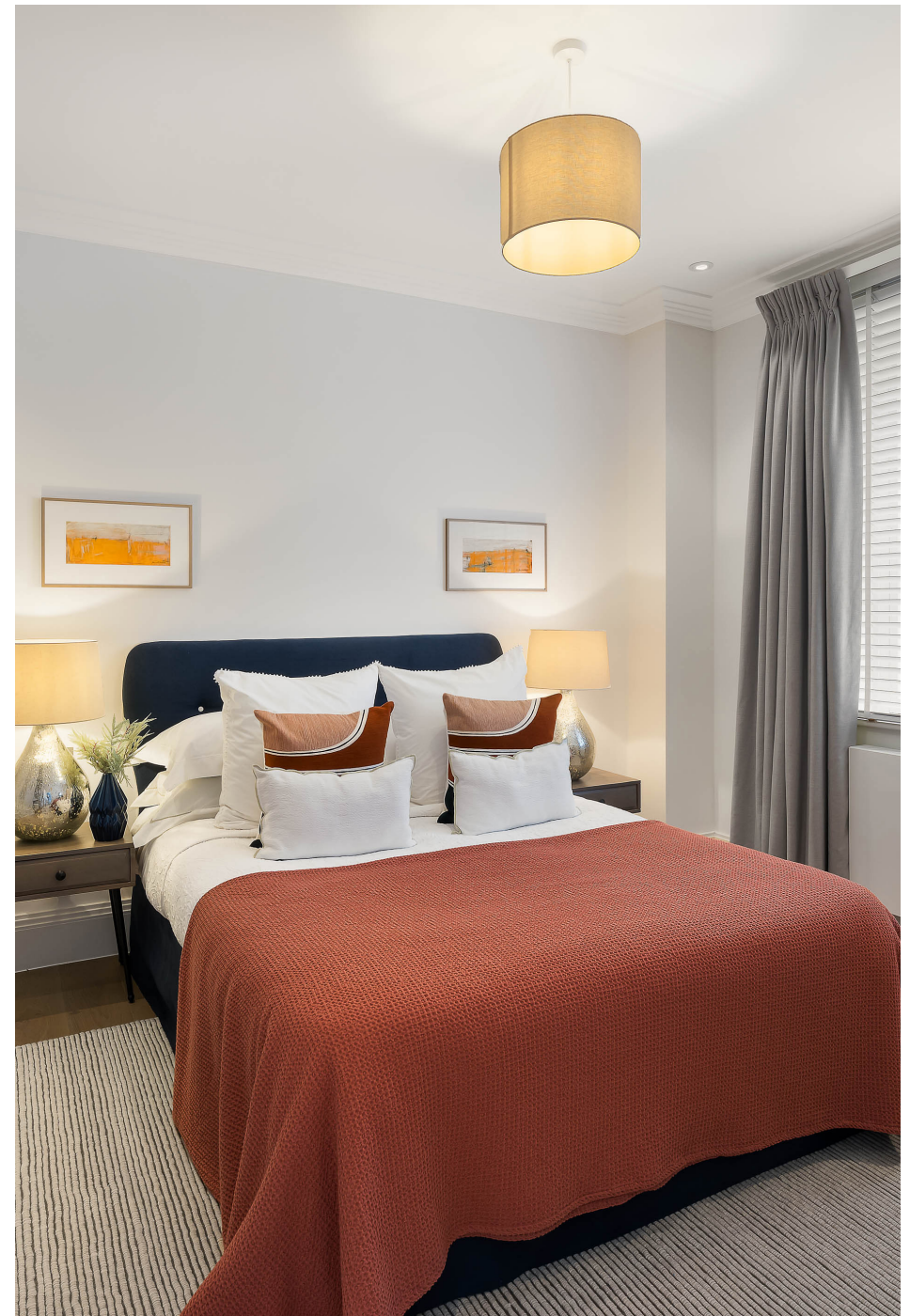




The mews house occupies a prime position on Lennox Gardens Mews, superbly positioned between Milner Street and Walton Street, just west of Cadogan Square. This prime Knightsbridge location offers easy access to world-renowned shopping and dining on Sloane Street, Beauchamp Place, and the iconic Harrods and Harvey Nichols. The wide-open spaces of Hyde Park are nearby, as are the V&A and Science Museum.

Well-connected for transport, the property is within close distance of Knightsbridge Underground Station (Piccadilly Line) and Sloane Square Underground Station (District & Circle Lines).

Exceptional dining options nearby include Scalini, Zafferano, San Lorenzo, and Amaya, while prestigious local schools such as Francis Holland, Hill House, More House, Sussex House, and The Knightsbridge School are nearby.



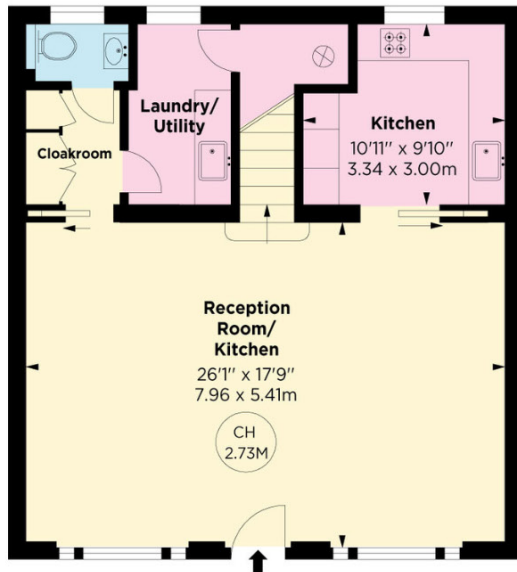




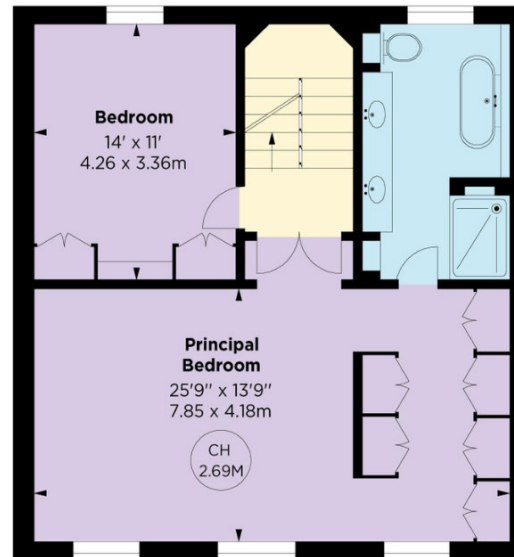




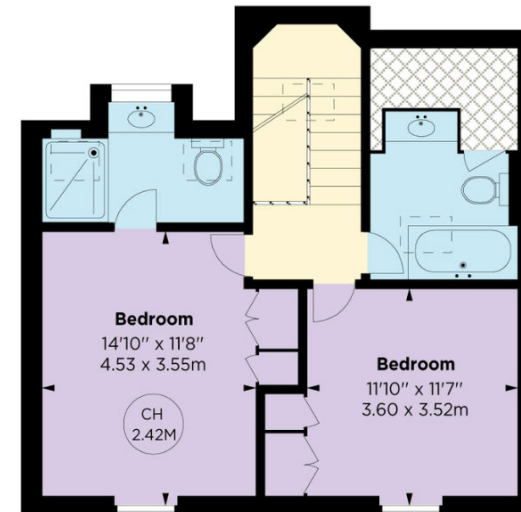




GROUND FLOOR



FIRST FLOOR



SECOND FLOOR



(Including Eaves)

Approximate Gross Internal Area = 192.05 sq m / 2066 sq ft

This plan is for layout guidance only. Not drawn to scale unless stated. Windows and door openings are approximate. Whilst every care is taken in the preparation of this plan, please check all dimensions, shapes and compass bearings before making any decisions reliant upon them. (ID767266)



We would be delighted  
to tell you more.

Paul Westwood  
020 3371 3132  
paul.westwood@knightfrank.com

Knight Frank Knightsbridge  
52-54 Sloane Avenue  
SW3 3DD

[knightfrank.co.uk](https://knightfrank.co.uk)

Your partners in property

1. Particulars: These particulars are not an offer or contract, nor part of one. You should not rely on statements given by Knight Frank in the particulars, by word of mouth or in writing ("information") as being factually accurate about the property, its condition or its value. Neither Knight Frank nor any joint agent has any authority to make any representations about the property, and accordingly any information given is entirely without responsibility on the part of Knight Frank. 2. Material Information: Please note that the material information is provided to Knight Frank by third parties and is provided here as a guide only. While Knight Frank has taken steps to verify this information, we advise you to confirm the details of any such material information prior to any offer being submitted. If we are informed of changes to this information by the seller or another third party, we will use reasonable endeavours to update this as soon as practical. 3. Photos, Videos etc: The photographs, property videos and virtual viewings etc. show only certain parts of the property as they appeared at the time they were taken. Areas, measurements and distances given are approximate only. 4. Regulations etc: Any reference to alterations to, or use of, any part of the property does not mean that any necessary planning, building regulations or other consent has been obtained. A buyer must find out by inspection or in other ways that these matters have been properly dealt with and that all information is correct. 5. Fixtures and fittings: A list of the fitted carpets, curtains, light fittings and other items fixed to the property which are included in the sale (or may be available by separate negotiation) will be provided by the Seller's Solicitors. 6. VAT: The VAT position relating to the property may change without notice. 7. To find out how we process Personal Data, please refer to our Group Privacy Statement and other notices at <https://www.knightfrank.com/legals/privacy-statement>.

Particulars dated January 2025. Photographs and videos dated January 2025. All information is correct at the time of going to print. Knight Frank is the trading name of Knight Frank LLP. Knight Frank LLP is a limited liability partnership registered in England and Wales with registered number OC305934. Our registered office is at 55 Baker Street, London W1U 8AN. We use the term 'partner' to refer to a member of Knight Frank LLP, or an employee or consultant. A list of members names of Knight Frank LLP may be inspected at our registered office. If you do not want us to contact you further about our services then please contact us by either calling 020 3544 0692, email to [marketing.help@knightfrank.com](mailto:marketing.help@knightfrank.com) or post to our UK Residential Marketing Manager at our registered office (above) providing your name and address.