



**DERBYSHIRE'S**  
— *Village and Country* —

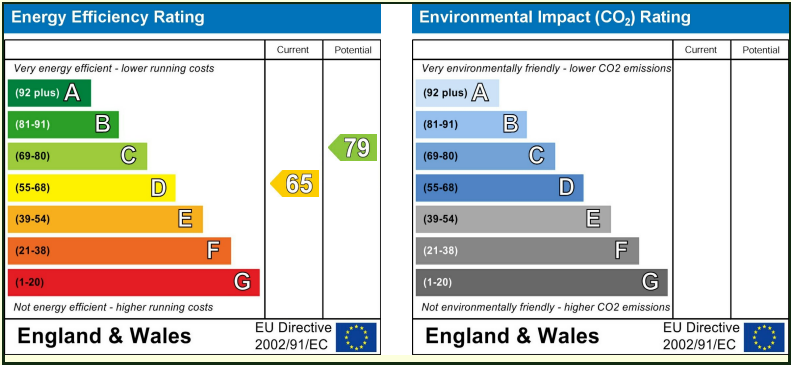
48 Combe Street, Chard, TA20 1JD



A beautifully refurbished three double bedroom terraced home, arranged over three floors and finished to a high modern standard throughout. This impressive property benefits from a comprehensive recent refurbishment, including new windows and doors and a brand-new gas central heating system, offering stylish and energy-efficient living.

The accommodation is spacious and versatile, with three generous double bedrooms, including a superb master suite with en-suite shower room. The layout over three floors provides excellent separation of living and sleeping spaces, ideal for modern lifestyles. To the rear, the property enjoys an enclosed courtyard garden, perfect for low-maintenance outdoor dining or relaxing. Conveniently located within Chard town centre, the house is ideally positioned for local shops, amenities and transport links.

An ideal first-time purchase or a ready-to-go rental investment, this turn-key home must be viewed to be fully appreciated



- Newly Renovated Throughout
- New double glazed windows and doors
- New gas central heating system
- New Kitchen & Bathrooms
  - Three double bedrooms
  - Master floor with en-suite
    - Courtyard garden
  - Town centre location
  - No onward chain

48 Combe Street, Chard, TA20 1JD  
**Guide Price £250,000**

**TURN -KEY PERFECTION:**  
**NEWLY REFURBISHED TO AN**  
**EXCE**

A beautifully refurbished three double bedroom terraced home, arranged over three floors and finished to a high modern standard throughout. This impressive property benefits from a comprehensive recent refurbishment, including new windows and doors and a brand-new gas central heating system, offering stylish and energy-efficient living.

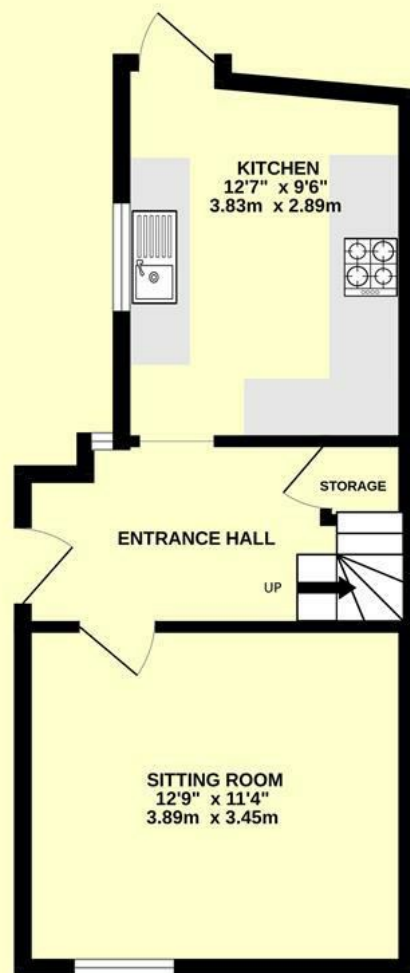
The accommodation is spacious and versatile, with three generous double bedrooms, including a superb master suite with en-suite shower room. The layout over three floors provides excellent separation of living and sleeping spaces, ideal for modern lifestyles.

To the rear, the property enjoys an

enclosed courtyard garden, perfect for low-maintenance outdoor dining or relaxing. Conveniently located within Chard town centre, the house is ideally positioned for local shops, amenities and transport links.

An ideal first-time purchase or a ready-to-go rental investment, this turn-key home must be viewed to be fully appreciated

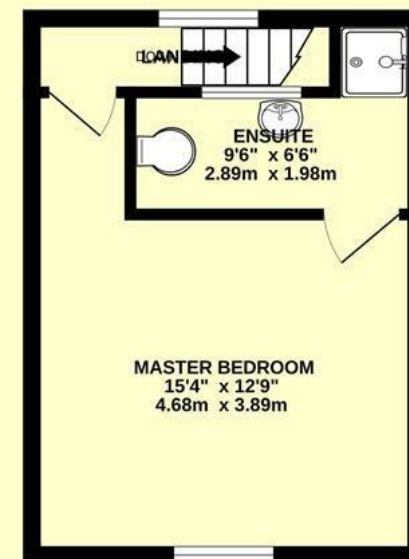
GROUND FLOOR  
334 sq.ft. (31.1 sq.m.) approx.



1ST FLOOR  
330 sq.ft. (30.7 sq.m.) approx.



2ND FLOOR  
227 sq.ft. (21.1 sq.m.) approx.



TOTAL FLOOR AREA : 891 sq.ft. (82.8 sq.m.) approx.

Whilst every attempt has been made to ensure the accuracy of the floorplan contained here, measurements of doors, windows, rooms and any other items are approximate and no responsibility is taken for any error, omission or mis-statement. This plan is for illustrative purposes only and should be used as such by any prospective purchaser. The services, systems and appliances shown have not been tested and no guarantee as to their operability or efficiency can be given.  
Made with Metropix ©2026





Directions -







**DERBYSHIRE'S**  
— *Village and Country* —

11, High Street, Chard, Somerset, TA20 1QF  
[www.derbyshires.net](http://www.derbyshires.net) 01460 63600