



Guide Price
£450,000

Leasehold

3x  2x  1x 

**First Floor Flat, Marine
Parade, Hythe, Kent,
CT21**

Wards
Helping you move forwards

Accommodation

FIRST FLOOR

Entrance Hall

Lounge: 20'6 into bay (6.25m) x 16'8 (5.08m)
narrowing to 15'10 (4.83m)

Balcony

Kitchen: 13'11 x 9'1 (4.24m x 2.77m)

Bedroom 1: 12'10 x 12'1 (3.91m x 3.69m)

Bedroom 2: 13'6 x 12'5 (4.12m x 3.79m)

Bedroom 3: 11'7 x 7'0 (3.53m x 2.14m)

Bathroom: 8'5 x 4'10 (2.57m x 1.47m)

Cloakroom

OUTBUILDING

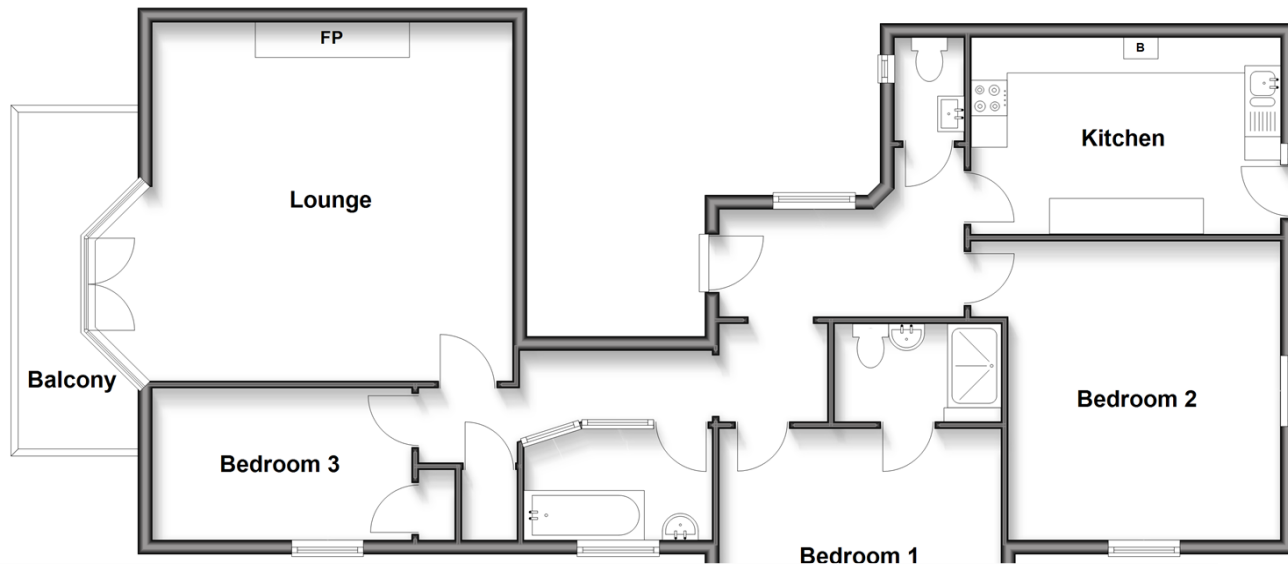
Garage : 18'0 x 10'0 (5.49m x 3.05m)

OUTSIDE

Communal Garden

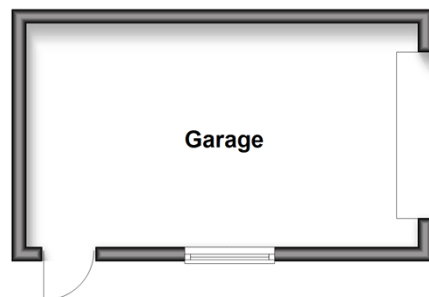
First Floor

Approx. 102.3 sq. metres (1100.9 sq. feet)



Outbuilding

Approx. 17.3 sq. metres (185.9 sq. feet)





Main features

- This first floor apartment has one of the best sea views in Hythe
- Lounge, all bedrooms and bathroom benefit from these views
- All bedrooms are doubles, en-suite shower room to bedroom 1
- Large kitchen with granite work surface and its own staircase to the communal garden
- Recently replaced private balcony



Nearest Schools

Primary Schools: Hythe Bay CofE Primary 0.6 miles, Saltwood CofE Primary 1.0 miles
Secondary Schools: Brockhill Park Performing Arts College 1.5 miles, The Folkestone School for Girls 2.6 miles, The Harvey Grammar School 3.0 miles



Transport Information

Train Stations: Sandling 2.2 miles, Folkestone Central 3.4 miles, Folkestone West High Speed Link 3.7 miles



Address

First Floor Flat, Marine Parade, Hythe, Kent, CT21



Directions

For directions to this property please contact us.



Wards
Helping you move forwards

Call Hythe Branch 01303 267473 ■ wardsofkent.co.uk



■ Legal advice should be taken to verify fixtures/fittings, planning, alterations and/or lease details ■ Appliances & services are untested, dimensions are approximate and floor plans are not to scale



12824956/20250924/MIB/MIB