



Priory Terrace

South Hampstead, NW6

Asking Price £625,000

Set on the sought-after Priory Terrace in South Hampstead, this beautifully proportioned two-bedroom raised ground floor flat offers an elegant blend of period charm and generous living space.

The standout feature is the impressive reception room, measuring 19'9 x 14', enhanced by 3.3 metre high ceilings and large sash windows, character themes which carry on throughout the flat.

Ideally located, the flat benefits from superb transport links, with the Lioness Overground Line just 0.3 miles away and the Bakerloo Line 0.4 miles away, providing easy access across London. Paddington Recreation Ground and tennis courts are also within 0.7 miles, offering excellent leisure facilities nearby. Sole agent.

CHESTERTONS



Priory Terrace

South Hampstead, NW6

- Raised ground floor flat
- Two bedrooms & one bathroom
- 3.3m high ceilings
- 0.3 miles from the Lioness Overground
- 0.4 miles from the Bakerloo Line
- 0.6 miles to West Hampstead Overground
- 0.7 miles from Paddington Recreation Ground



Tenure: Share of Freehold and a lease with 974 years remaining.

Service Charge: £825 contribution to the sinking fund.

Ground Rent: £1 per annum

Local Authority: Camden

Council Tax Band: D

Score	Energy rating	Current	Potential
92+	A		
81-91	B		
69-80	C	73 C	80 C
55-68	D		
39-54	E		
21-38	F		
1-20	G		

Chestertons Hampstead Sales

55-56 Hampstead High Street

Hampstead

NW3 1QH

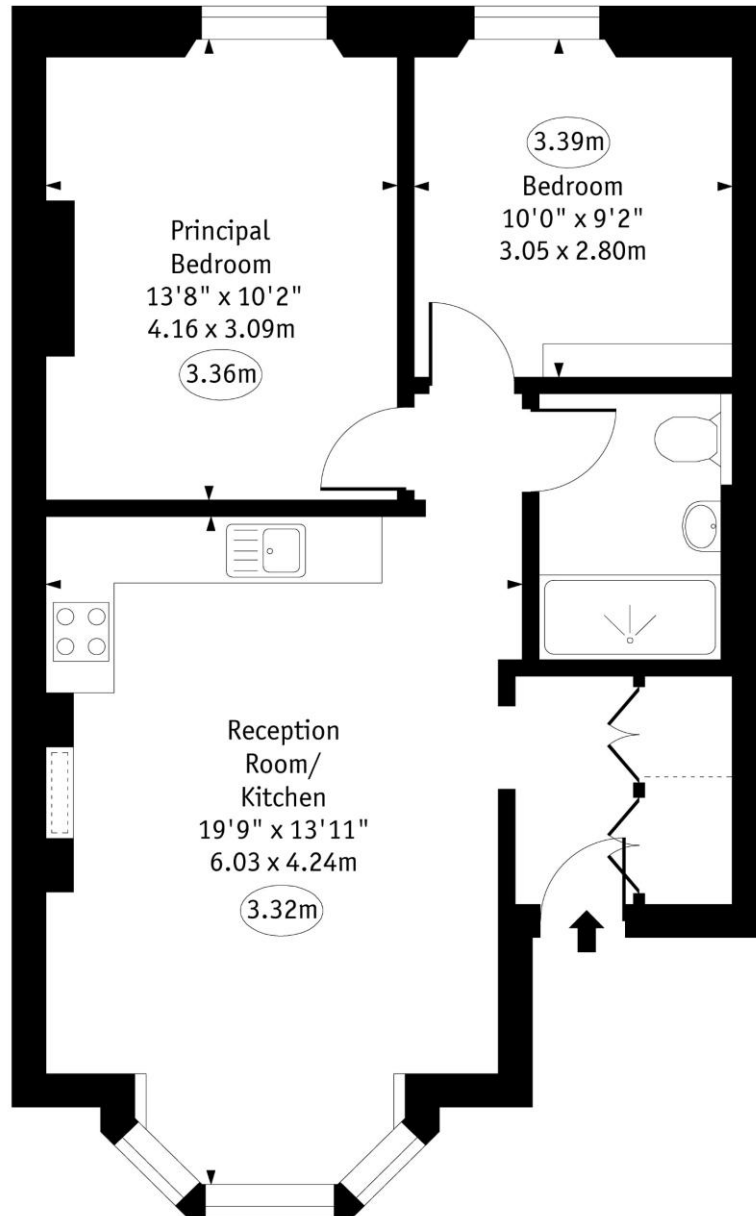
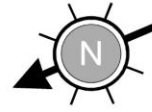
hampstead@chestertons.co.uk

020 7794 3311

chestertons.co.uk

Priory Terrace, South Hampstead, NW6

○ - Ceiling Height



Raised Ground Floor

Approx Gross Internal Area 622 Sq Ft - 57.78 Sq M

Every attempt has been made to ensure the accuracy of the floor plan shown. However, all measurements, fixtures, fittings, and data shown are approximate interpretations and for illustrative purposes only. Measured according to the RICS. Not To Scale.

Prepared by Chestertons

