

16 Hemnall Street

Epping, Epping

Welcome to Hemnall Street. Reimagined from top to bottom, this three bedroom Victorian is steps away from all the buzz Epping has to offer. Beautifully crafted with exquisite style and attention to detail, this is a very special home indeed.

Council Tax band: C

Tenure: Freehold

- Beautifully reimagined Victorian home
- Open plan living
- Two bathrooms
- Underfloor heating & New boiler
- Double glazed sash windows
- Short walk to Epping high street and station
- Close to Epping Forest



Entrance Hall

Sitting / Dining Area

24' 5" x 11' 9" (7.44m x 3.59m)

Kitchen

14' 4" x 15' 1" (4.37m x 4.60m)

Bathroom

9' 11" x 5' 11" (3.01m x 1.81m)

Bedroom

12' 3" x 9' 9" (3.73m x 2.97m)

Bedroom

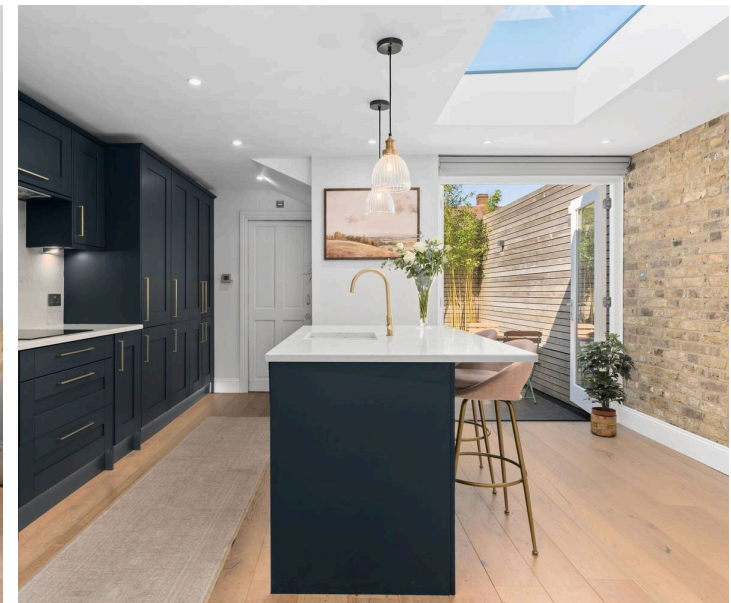
10' 11" x 9' 2" (3.32m x 2.80m)

Bedroom

8' 6" x 5' 0" (2.58m x 1.53m)

Shower Room

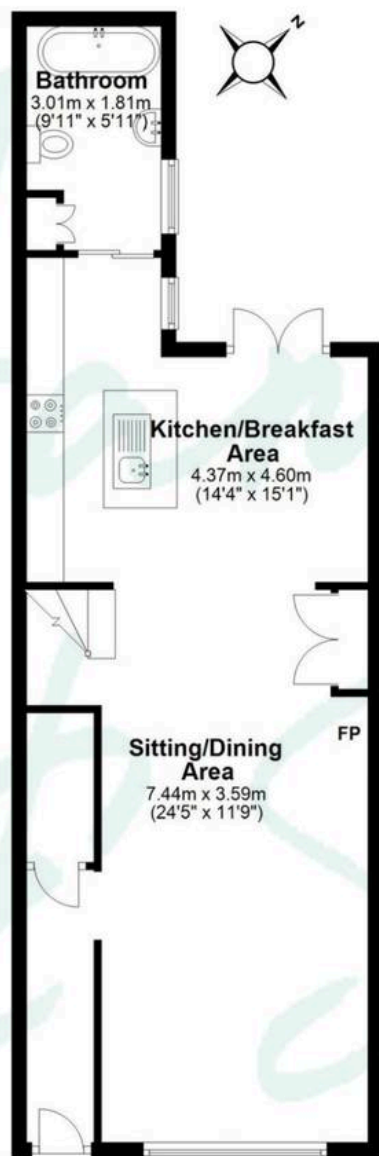
6' 8" x 5' 6" (2.02m x 1.67m)





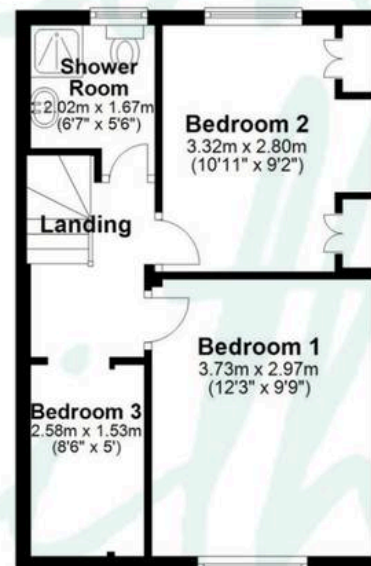
Ground Floor

Approx. 56.6 sq. metres (609.7 sq. feet)



First Floor

Approx. 32.8 sq. metres (352.8 sq. feet)



Total Area: Approx. 89.4 sq m (962.5 sq ft)

This floor plan is for illustrative purposes only and is not to scale.
Measurements are approximate and intended as a guide. All details should be verified independently.