

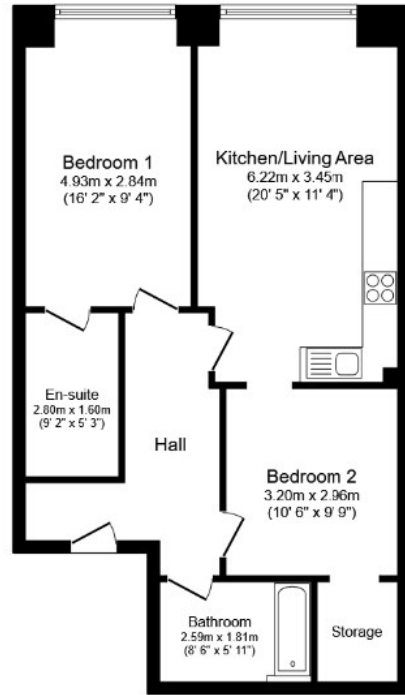


**2 Bed
Apartment
located in 8 Lower
Vickers Street**

Offers Over £210,000



 **NPP
RESIDENTIAL**



Floor Plan

Floor area 66.9 m² (720 sq.ft.)

TOTAL: 66.9 m² (720 sq.ft.)

This floor plan is for illustrative purposes only. It is not drawn to scale. Any measurements, floor areas (including any total floor area), openings and orientations are approximate. No details are guaranteed, they cannot be relied upon for any purpose and do not form any part of any agreement. No liability is taken for any error, omission or misstatement. A party must rely upon its own inspection(s). Powered by www.Propertybox.io

DIRECTIONS

CONTACT

22 Lloyd Street
Manchester
M2 5WA

E: info@nppresidential.co.uk
T: 0161 639 0059
<https://nppresidential.co.uk/>

EPC Rating:
Council Tax Band: A

Energy Efficiency Rating		Current	Potential
<i>Very energy efficient - lower running costs</i>			
(92 plus) A			
(81-91) B			
(69-80) C			
(55-68) D			
(39-54) E			
(21-38) F			
(1-20) G			
<i>Not energy efficient - higher running costs</i>			
England & Wales		EU Directive 2002/91/EC 