



Wey Meadows, KT13
£550,000

Waterview


A unique, stylish modern riverside home on a large plot with gardens running down to The River Wey with a separate annexe/studio office.

Wey Meadows is a secluded private road located within a short walk of Weybridge town centre and station with 25 minute connections to London.





Accommodation is made up of a large open plan living space with floor to ceiling windows and a contemporary, integrated kitchen with central island, breakfast bar, high quality ovens and coffee machine. There is an impressive 18ft double bedroom with en-suite and access to utility room with a further shower room with enclosed steam shower. There is full air conditioning and underfloor heating throughout. There is a raised decked entertaining area which overlooks the large garden space with lovely views of and access to The River Wey.

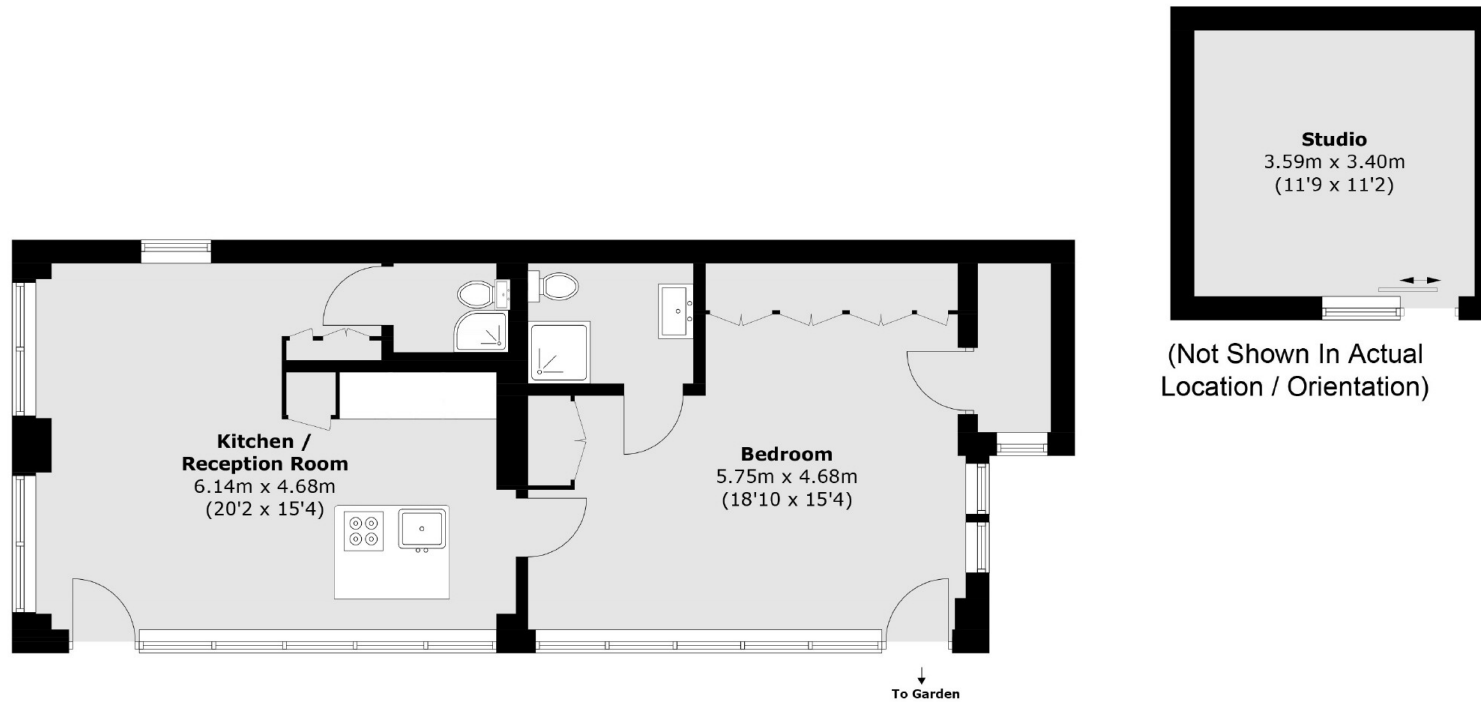
A modern, studio/home office has recently been built and there is off street parking for several cars.

Features

Stylish Modern House
Beautifully Designed
Large Plot
Studio/Annexe
Parking
60ft River Frontage



Wey Meadows, Weybridge, KT13



Total area (approx.): 58.2 sq. m (626.4 sq. ft)
Studio : 12.3 sq. m (132.3 sq. ft)

Contact

To arrange a viewing call our office on the number below or visit our website.



Energy Rating: F. We aim to make our particulars both accurate and reliable. However they are not guaranteed; nor do they form part of an offer or contract. If you require clarification on any points then please contact us, especially if you're traveling some distance to view. Please note that appliances and heating systems have not been tested and therefore no warranties can be given as to their good working order.

