



Blodwell Street

Salford

HILLS

In Excess of £240,000

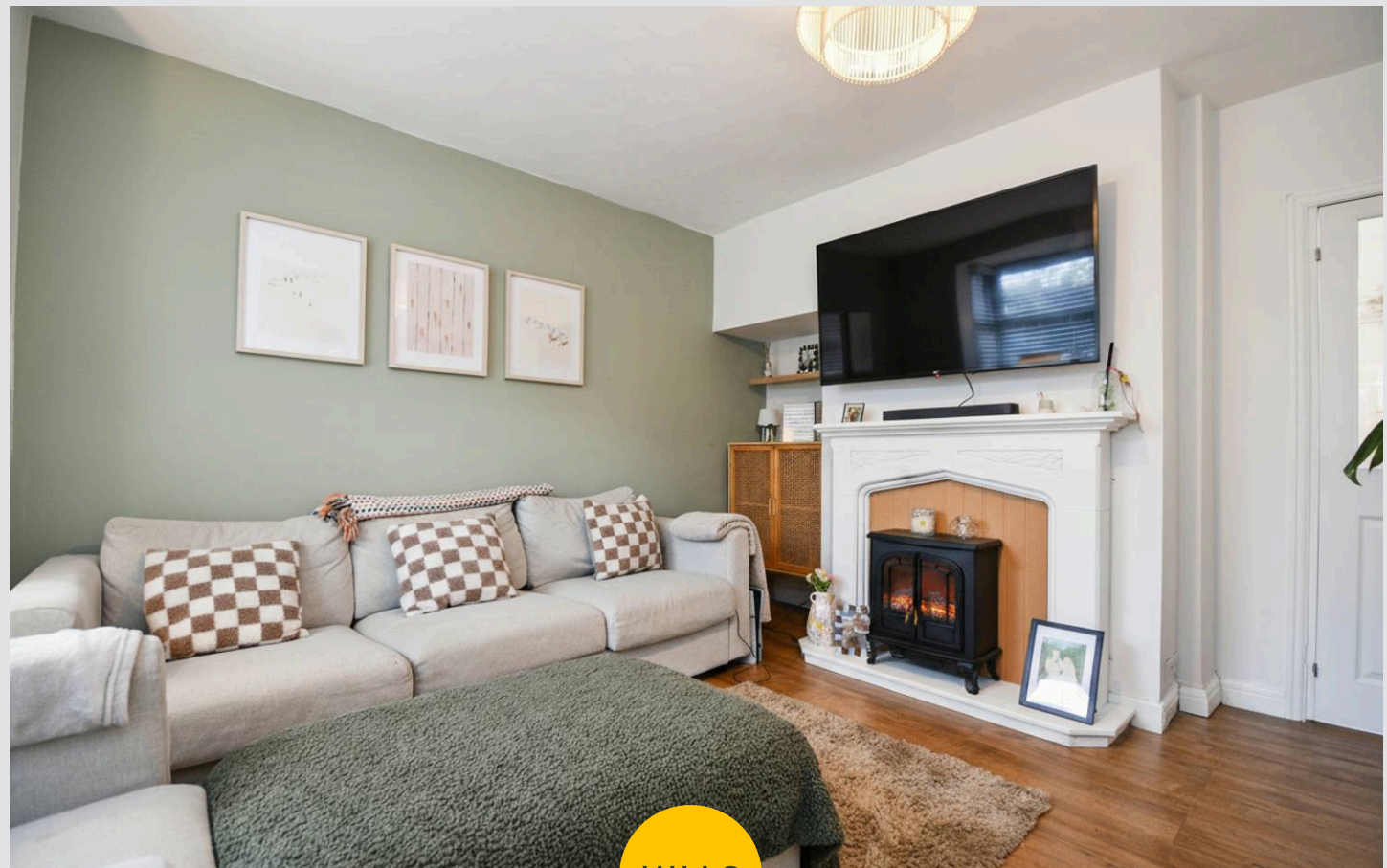
Blodwell Street

Salford

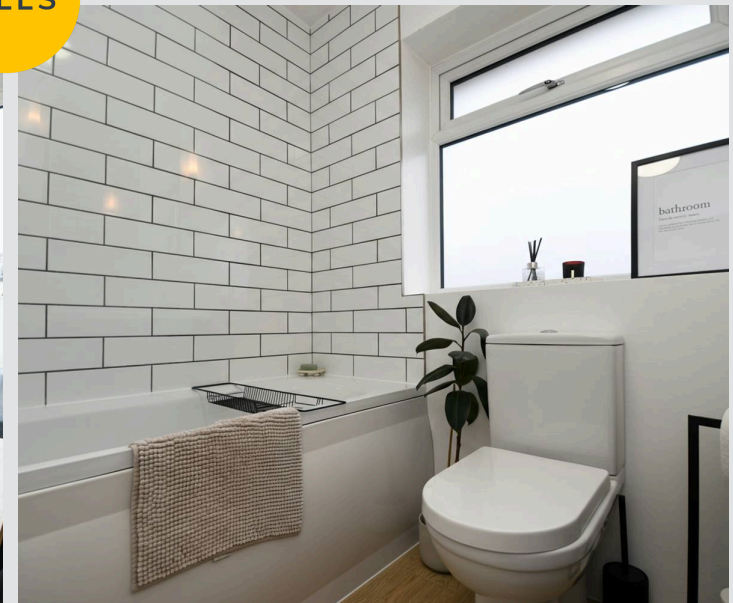
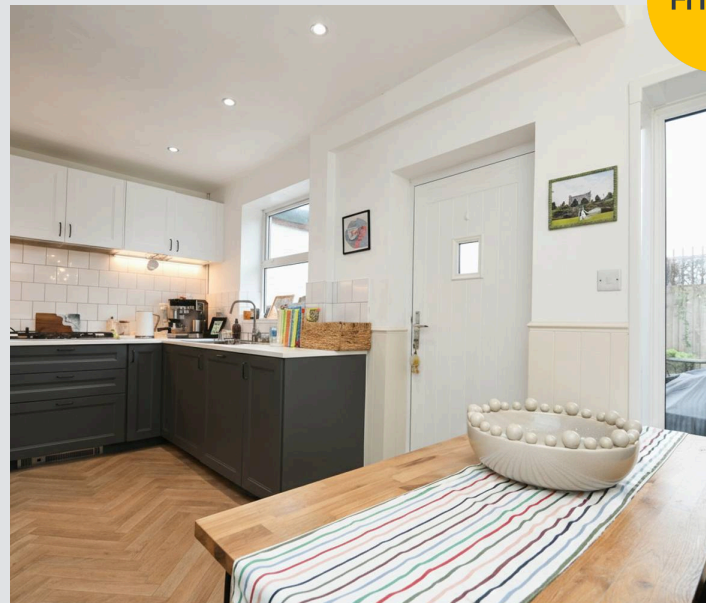
****Beautifully Presented, Three Bedroom Property
Within Walking Distance of Salford Quays & Media
City! Featuring a Stylish Fitted Kitchen and Low-
Maintenance Gardens to the Front and Rear!****
Council Tax band: A

Tenure: Freehold

- Beautifully Presented Three Bedroom Property
- Within Walking Distance of Salford Quays & Media City
- Spacious Family Lounge
- Bright Modern Kitchen Diner
- Modern Three-Piece Bathroom Suite
- Three Generously-Sized Bedrooms
- Low-Maintenance Gardens to the Front and Rear
- Close to Langworthy Tram Stop, which Provides Direct Access into Manchester City Centre
- Viewing is Highly Recommended!
- Perfect first time buy!



HILLS



Entrance Hallway

4' 6" x 4' 11" (1.37m x 1.49m)

Lounge

12' 6" x 14' 10" (3.80m x 4.51m)

Kitchen / Diner

15' 8" x 9' 2" (4.77m x 2.80m)

Landing**Bedroom One**

12' 8" x 11' 1" (3.87m x 3.38m)

Bedroom Two

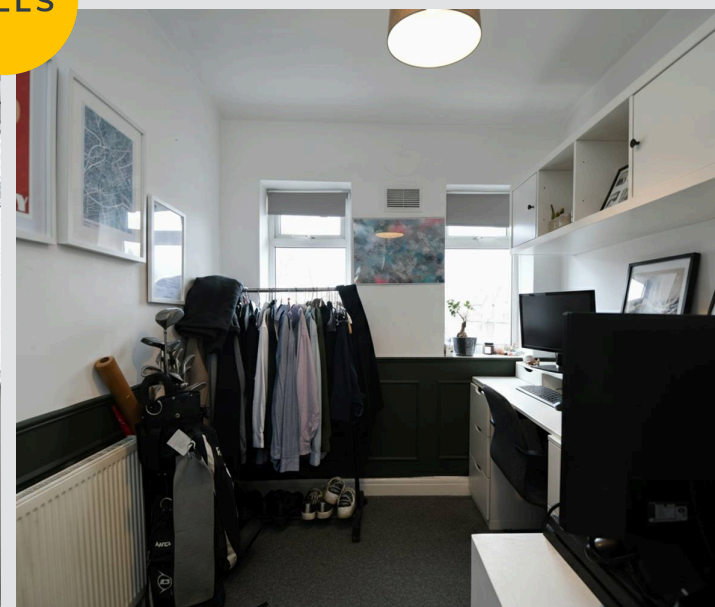
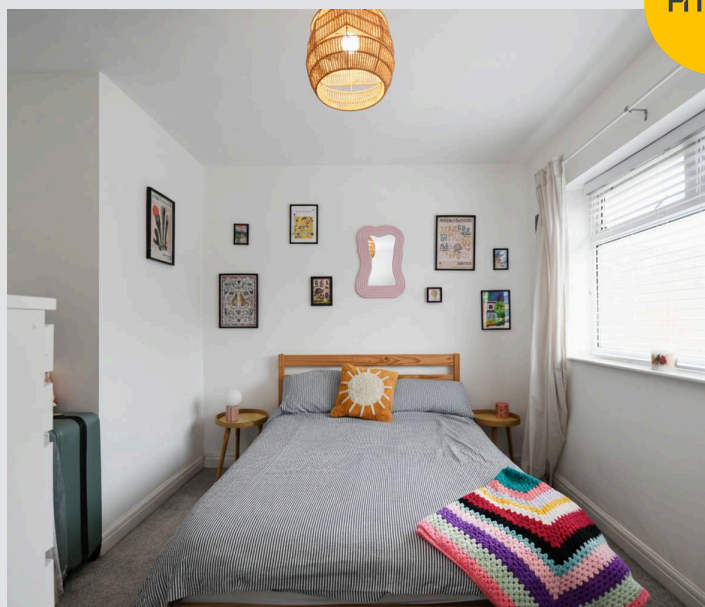
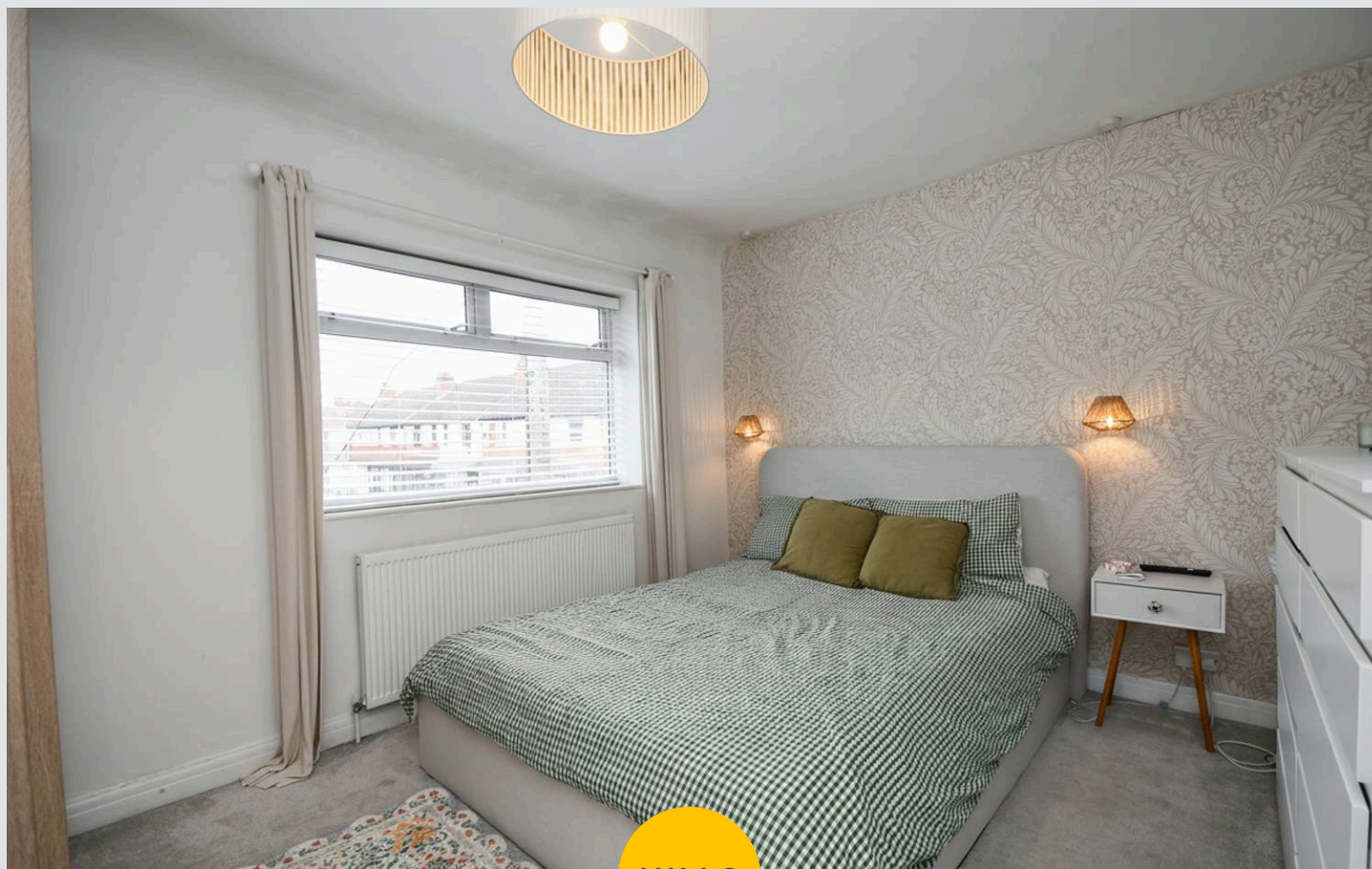
12' 5" x 10' 7" (3.79m x 3.23m)

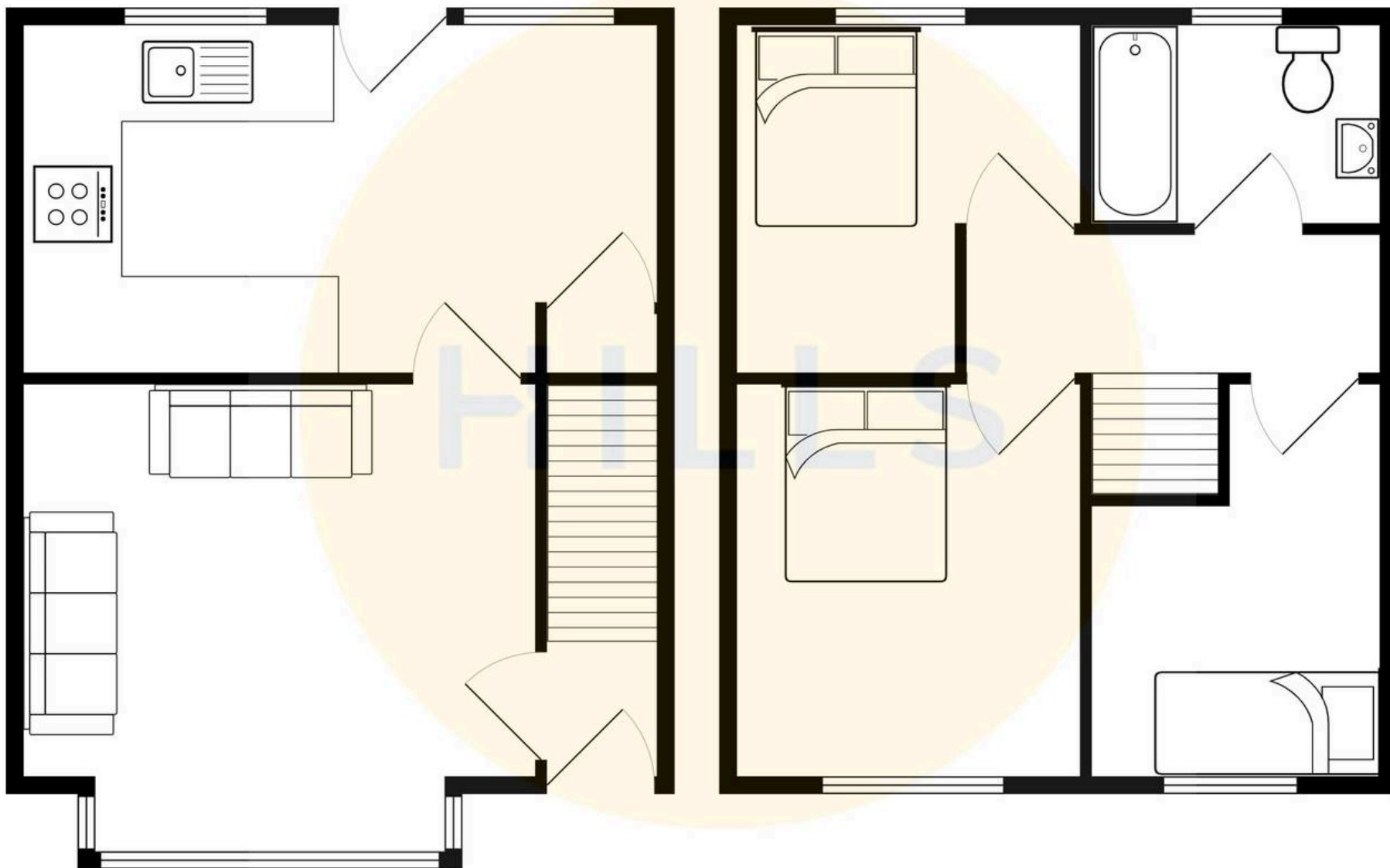
Bedroom Three

10' 11" x 7' 3" (3.33m x 2.20m)

Bathroom

7' 1" x 7' 2" (2.15m x 2.19m)







Hills | Salfords Estate Agent

Hills Residential, Sentinel House Albert Street – M30 0SS

0161 707 4900

sales@hills.agency

www.hills.agency/



By law, we are required to conduct anti-money laundering checks on all potential buyers and sellers. In line with HMRC guidelines, our trusted partner, Coadjute, will securely manage these checks on our behalf. A non-refundable fee of £45 + VAT per person will apply, and Coadjute will handle the payment. Once an offer is accepted, Coadjute will send a secure link for you to complete the biometric checks. These checks must be completed before we can send the memorandum of sale to all parties. PLEASE NOTE: The Agent has not tested any equipment, fixtures, fittings or services so cannot verify that they are in working order or fit for the purpose. References to the properties tenure are based on information supplied by the seller. You are advised to check the availability of this property before travelling any distance to view. Every effort has been made to ensure these particulars are correct and not misleading but their accuracy is not guaranteed nor do they form part of any contract.