



Guide Price

£450,000

Freehold

4x  2x  1x 

**Hillcrest View, Basildon,
Essex, SS16**

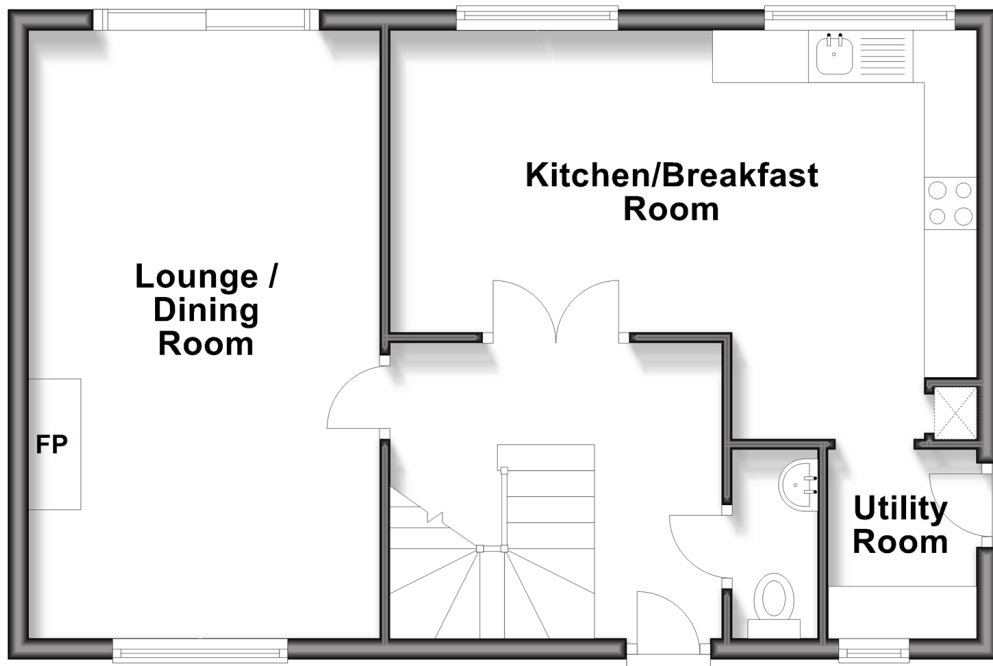
OVER 60?

Secure this property
for up to **59% less!**

 **DOUGLAS
ALLEN**
Helping you move forwards

Ground Floor

Approx. 52.7 sq. metres (567.1 sq. feet)



First Floor

Approx. 52.7 sq. metres (567.1 sq. feet)



Accommodation

GROUND FLOOR

Entrance Hallway

Lounge/Dining Room : 19'2 x 11'4
(5.85m x 3.46m)

Kitchen/Breakfast Room : 18'5 x 13'5
(5.62m x 4.09m)

Utility Room : 6'7 x 5'2 (2.01m x 1.58m)

Cloakroom

FIRST FLOOR

Landing

Bedroom 1: 11'7 x 9'5 (3.53m x 2.87m)

En-Suite shower Room

Bedroom 2: 11'7 x 9'3 (3.53m x 2.82m)

Bedroom 3: 8'9 x 7'0 (2.67m x 2.14m)

Bedroom 4: 9'2 x 3'4 (2.80m x 1.02m)

Bathroom

OUTSIDE

Front Garden

Rear Garden With Hot Tub

Driveway

Garage



Main features

- Off street parking with a garage
- Private rear garden with hot tub
- High specification modern kitchen with island
- 4 generous sized bedrooms
- En-suite to bedroom 1
- Close to local amenities and transport links



Nearest Schools

Primary Schools: Vange Primary and Nursery 0.5 miles, Ryedene Community Primary 0.7 miles, Bardfield Primary 1.1 miles

Secondary Schools: Chalvedon School 2.3 miles, Barstable



Transport Information

Train Stations: Pitsea 2.0 miles, Basildon 2.2 miles, Laindon 3.9 miles



Address

Hillcrest View, Basildon, Essex, SS16



Directions

For directions to this property please contact us.



**DOUGLAS
ALLEN**

Helping you move forwards

Call Basildon Branch 01268 293993 ■ douglasallen.co.uk



■ Through a Homewise Home For Life Plan people aged 60+ can secure this property for up to 59% less, by purchasing a Lifetime Lease



50509441/20260402/GW/AA