



The Grange House

London Road, Hitchin, Hertfordshire, SG4 7NE

Gavin Mills
POWERED BY

UK



The Grange House

Guide Price £3,000,000

A truly remarkable, seven/eight-bedroom, five reception room Georgian farmhouse, with a wonderful entertainment barn located just 1.6 miles from Hitchin train station.

The Grange House, Grade II listed and originally dating back to circa 1700, has been subject to an extensive and meticulous restoration program by the present vendors and now offers 5200 sq. ft. of accommodation in the main house, along with over 2000 sq. ft. of barns and outbuildings, all finished to an exceptional standard throughout.

This beautiful period home sits on a gated, landscaped plot of half an acre and is perfectly positioned for easy access to an abundance of amenities in Hitchin Town Centre, Hitchin train station, and highly regarded local schools, as well as open countryside walks.

The ground floor has a spacious entrance hall leading to a dining room, a drawing room, a kitchen/breakfast room, a snug and a utility/boot room.

The principal suite has a freestanding bathtub, an en-suite shower room and a walk in dressing room (formerly a bedroom)

There are six further double bedrooms along with two bath/shower rooms.

The entertainment barn has a vaulted ceiling and polished concrete floors with underfloor heating. There is a custom-built bar with integrated appliances. The barn has a built-in Sonos and Bowers & Wilkins sound system.

Outside, the property has gated parking for several vehicles along with landscaped gardens to both the front and the rear.

The property is offered for sale with no upper chain.

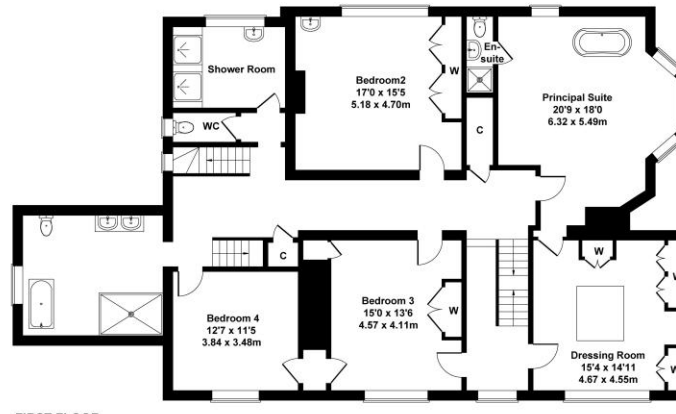
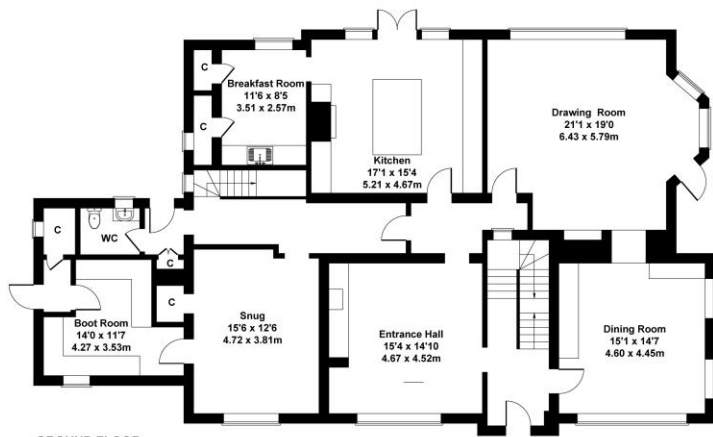
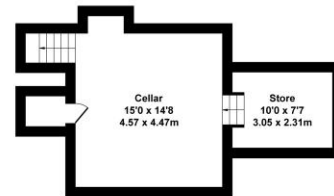
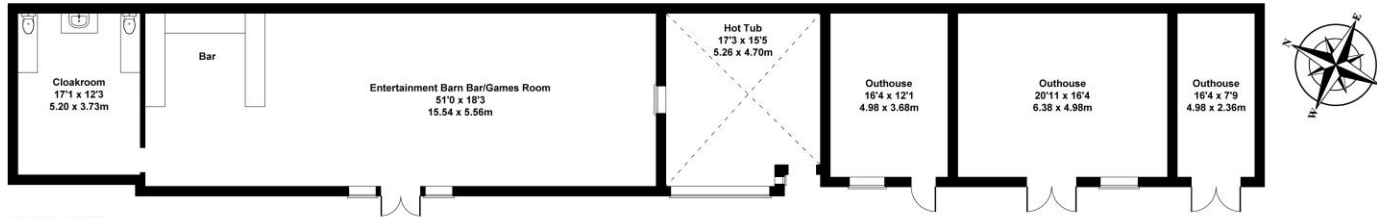




Call Gavin Mills to arrange a viewing on **07971 807 341**

The Grange House

Approximate Gross Internal Area
7266 sq ft - 675 sq m



Not to Scale. Produced by The Plan Portal 2026
For Illustrative Purposes Only.



Tel: 07971 807 341

Email: gavin.mills@exp-uk.co.uk

www.gavin-mills.co.uk

Gavin Mills



IMPORTANT: we would like to inform prospective purchasers that these sales particulars have been prepared as a general guide only. A detailed survey has not been carried out, nor the services, appliances and fittings tested. Room sizes should not be relied upon for furnishing purposes and are approximate. If floor plans are included, they are for guidance only and illustration purposes only and may not be to scale. If there are any important matters likely to affect your decision to buy, please contact us before viewing the property.