



Asking Price £180,000 | Apartment | Leasehold

- In need of modernisation
- Lovely Communal Gardens
- New Lease On Completion
- Close To Town Centre
- No onward chain
- One Bedroom First Floor dual aspect
- Part-Ownership Scheme 80%
- Close to Twickenham Station
- Over 60's Development

020 8892 1313



Perryn Court, Twickenham, London TW1 1BA

*****Over 60's development with 80% ownership*****

Milestone and Coliis are please to offer this charming apartment in Perryn Court, Grimwood Road in Twickenham, this delightful apartment offers a wonderful opportunity for those seeking a cosy abode in a prime location. Situated in an over 60's development with 80% ownership, this first-floor flat boasts a comfortable reception room that welcomes an abundance of natural light through its large windows. The separate kitchen provides ample space for culinary creations, while the generous double bedroom and well-appointed shower room cater to your comfort.

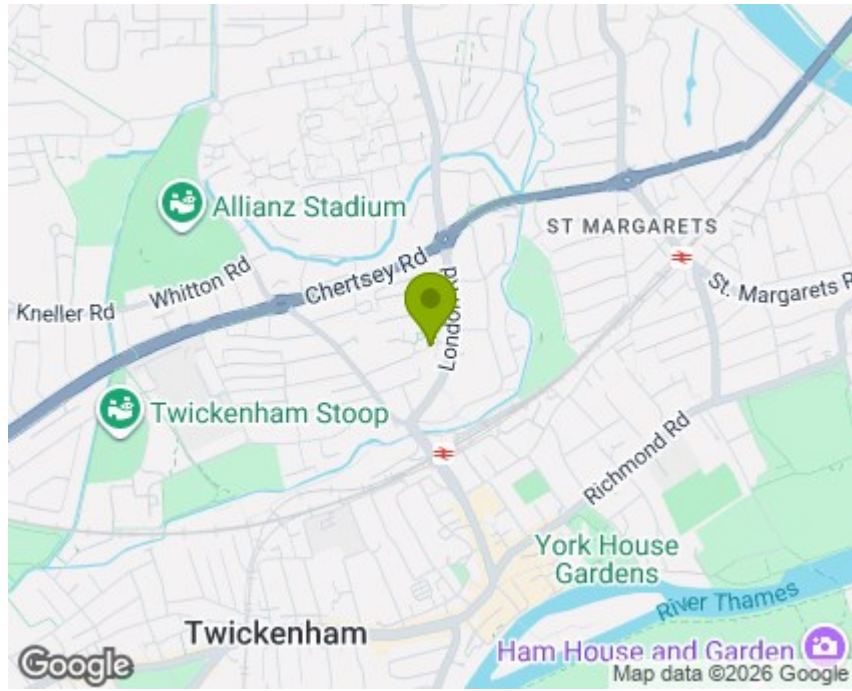
The communal gardens and seating areas offer a tranquil retreat for residents to enjoy the outdoors.

Perryn Court's proximity to local bus routes on London Road and Whitton Road, as well as Twickenham station, makes commuting a breeze. Additionally, being just a stone's throw away from Twickenham rugby stadium adds a touch of excitement for sports enthusiasts.

Although some cosmetic updates are needed, this property presents a fantastic opportunity to tailor the space to your taste and create a cosy haven to call home. With no onward chain, the path to making this charming apartment yours is clear. Don't miss out on the chance to own a slice of Twickenham's vibrant community - book a viewing today and envision the possibilities that await in this inviting space.



Starting at Milestone and Collis 86 Heath Rd, Strawberry Hill, Twickenham Tw1 4bw, Head east on Heath Rd/A305/A311 towards Clifden Rd, Continue to follow A305 0.3 mile, Slight left onto London Rd/A310, 0.5 mile, Turn left onto Ivybridge Close 135 ft, Turn left to stay on Ivybridge Close, Destination will be on the right 52 ft, Tw1 1ba Grimwood Rd, Twickenham



TW1 1BA lies on Grimwood Road in Twickenham. TW1 1BA is located in the St Margarets & North Twickenham electoral ward, within the London borough of Richmond upon Thames and the English Parliamentary constituency of Twickenham. The Sub Integrated Care Board (ICB) Location is NHS South West London ICB - 36L and the police force is Metropolitan Police.

Nearest railway stations to TW1 1BA
 Twickenham Station 0.3km
 St Margarets (London) Station 0.8km
 Strawberry Hill Station 1.7km

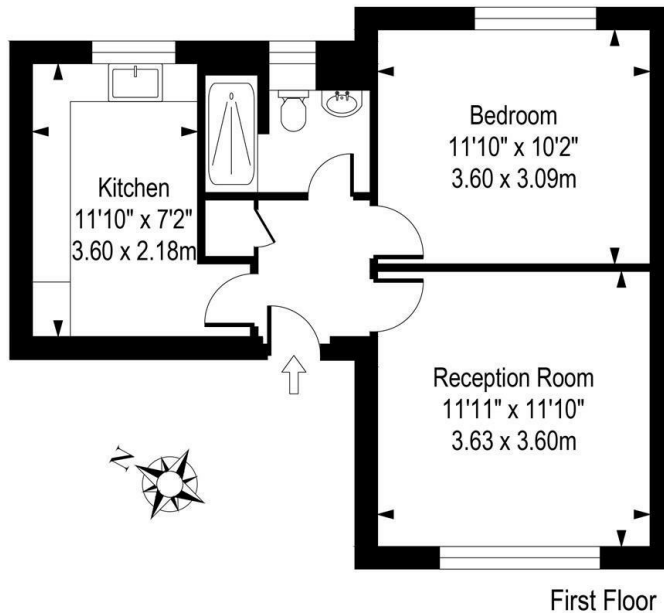
Council tax band C

| Energy Efficiency Rating | | Current | Potential |
|---|--|-------------------------|-----------|
| Very energy efficient - lower running costs | | | |
| (92 plus) A | | | |
| (81-91) B | | | |
| (69-80) C | | | |
| (55-68) D | | | |
| (39-54) E | | | |
| (21-38) F | | | |
| (1-20) G | | | |
| Not energy efficient - higher running costs | | | |
| England & Wales | | EU Directive 2002/91/EC | |

| Environmental Impact (CO ₂) Rating | | Current | Potential |
|---|--|-------------------------|-----------|
| Very environmentally friendly - lower CO ₂ emissions | | | |
| (82 plus) A | | | |
| (61-81) B | | | |
| (49-60) C | | | |
| (35-48) D | | | |
| (29-34) E | | | |
| (21-28) F | | | |
| (1-20) G | | | |
| Not environmentally friendly - higher CO ₂ emissions | | | |
| England & Wales | | EU Directive 2002/91/EC | |

Perryn Court, TW1

Approx Gross Internal Area: 443 sq ft / 41.2 sq m



It is our aim to provide particulars that are both accurate and reliable but they are not guaranteed and would not form part of any offer or contract. Please contact us if you require clarification and we would be happy to assist. Please also note that the appliances and heating system have not been tested and therefore, no warranties can be given as to their condition.