

## Putney High Street, SW15

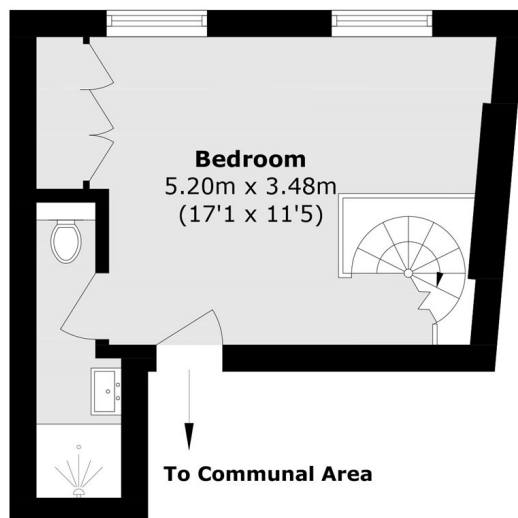
£399,950

A beautiful, split level Victorian conversion flat set overlooking Putney Bridge, The Thames and St Mary's church. The flat has been recently modernised, including a new boiler, has a 112 year lease and is offered with vacant possession. Located at the bridge end of Putney High Street with a great selection of shops, bars and restaurants and with easy access to both Putney Bridge and East Putney stations.

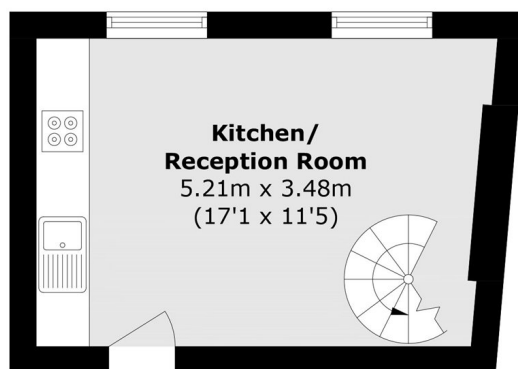
### Features

- Victorian Conversion
- Split Level
- Recently Refurbished
- No Chain
- River Views
- Excellent Location

## Putney High Street, LONDON, SW15



### Second Floor



### First Floor

Total area (approx): 36.8 sq. m (396.1 sq. ft)

#### Contact

To arrange a viewing call our office on the number below or visit our website.



Energy Rating: . We aim to make our particulars both accurate and reliable. However they are not guaranteed; nor do they form part of an offer or contract. If you require clarification on any points then please contact us, especially if you're traveling some distance to view. Please note that appliances and heating systems have not been tested and therefore no warranties can be given as to their good working order.