



## Rosefield Lane, Newhall, Harlow, CM17 9SE

Geoffrey Matthew Estates are delighted to offer this very well presented, four bedroom, link-detached, family home in the popular residential area of Newhall. Built approximately 8 years ago, this residence offers generous living accommodation on the ground floor, four double bedrooms, en-suite to master bedroom, and terrace balcony off of the main landing. A two tiered rear garden offers ample outside space and the driveway will accommodate multiple vehicles.

Close to local schools, amenities and transport links, this property is certain to prove popular so early viewings are very highly recommended!

Offers Over £600,000

# Rosefield Lane, Newhall, Harlow, CM17 9SE



- Link-Detached
- Balcony
- Modern Build
- Ground Floor W.C
- Four Bedrooms
- Off Street Parking

## Entrance Hall

## Lounge/Dining

18'1 x 22'7 (5.51m x 6.88m)

## Kitchen

14'8 x 14'8 (4.47m x 4.47m)

## W.C

4'9 x 5'3 (1.45m x 1.60m)

## First Floor Landing

## Bedroom

14'7 x 9'6 (4.45m x 2.90m)

## Ensuite

7'5 x 4'1 (2.26m x 1.24m)

## Bedroom

9'9 x 15'7 (2.97m x 4.75m)

## Bedroom

9'8 x 10'9 (2.95m x 3.28m)

## Bedroom

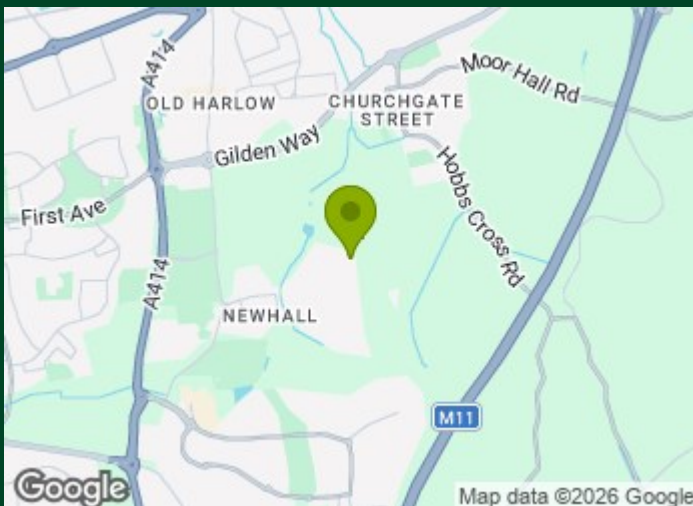
8'5 x 11'7 (2.57m x 3.53m)

## Bathroom

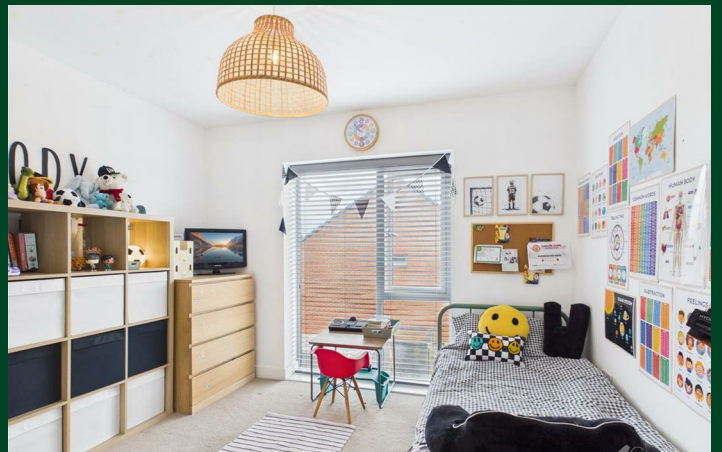
7'5 x 6'2 (2.26m x 1.88m)

## Balcony

7'11 x 10'10 (2.41m x 3.30m)



[Directions](#)



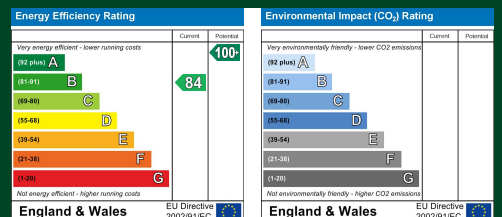
# Floor Plan



## Council Tax Details

Harlow Band F

These particulars, whilst believed to be accurate are set out as a general outline only for guidance and do not constitute any part of an offer or contract. Intending purchasers should not rely on them as statements of representation of fact, but must satisfy themselves by inspection or otherwise as to their accuracy. No person in this firm's employment has the authority to make or give any representation or warranty in respect of the property.



Old Harlow: 01279 444988 Email: harlow@geoffreymatthew.co.uk  
 Great Ashby: 01438 740111 Email: greatashby@geoffreymatthew.co.uk