



1 Bedroom
Lichfield Road, NW2

 **Portland**
Trusted, every step of the way

£1,700 PCM

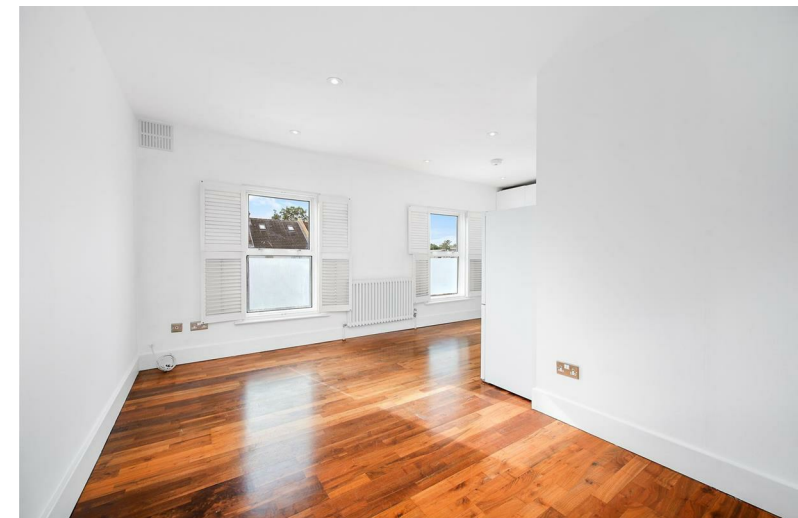
As soon as you step into the apartment, you'll notice the open-plan layout that maximizes space and natural light. The living area effortlessly flows into the newly renovated kitchen, creating an adaptable and welcoming ambience. The property features a spacious bedroom with newly fitted carpets and a modern bathroom.

The apartment is available as partly furnished, with essential furniture provided to ensure a comfortable living experience. This gives you the freedom to add your personal touch and furnish the space to your liking.

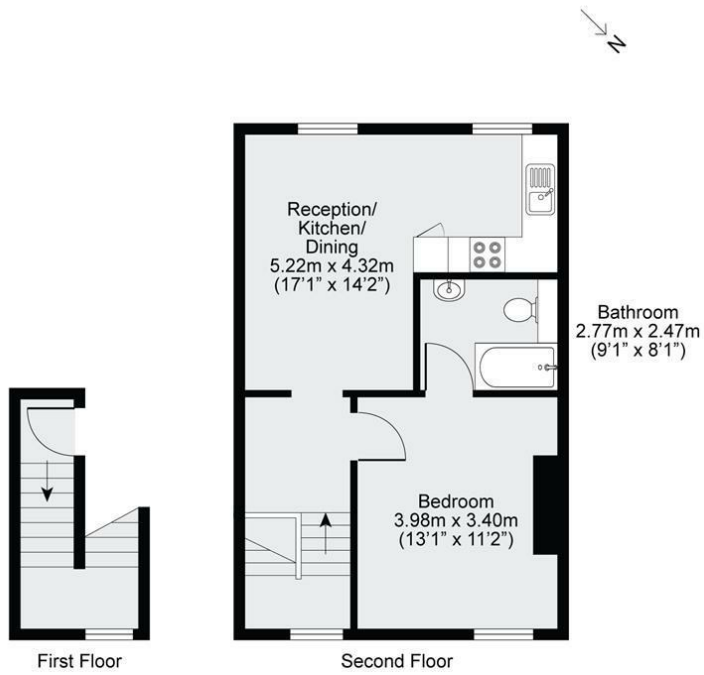
In terms of local amenities, residents will find themselves within close proximity to a range of shops, supermarkets, cafes, and restaurants. These amenities provide everyday essentials and a variety of dining options, making it convenient to meet your daily needs and enjoy the local community.

Located just a short distance from the nearest station, this property offers convenient access to public transportation. Cricklewood Thameslink Station is approximately 0.1 miles away, ensuring easy commuting and connectivity to other parts of the city.

- RECENTLY REFURBISHED
- Close Proximity To Station
- Open Plan Kitchen
- Part-Furnished
- Great Transport Links
- Lots of Charm
- Close to Shops & Parks
- EPC- C







GROSS INTERNAL AREA (GIA)
50.0qm / 538.2sqft

TOTAL STORAGE SPACE
0.0qm / 0.0sqft

EXTERNAL STRUCTURAL FEATURES
0.0qm / 0.0sqft

RESTRICTED HEAD HEIGHT
0.0qm / 0.0sqft

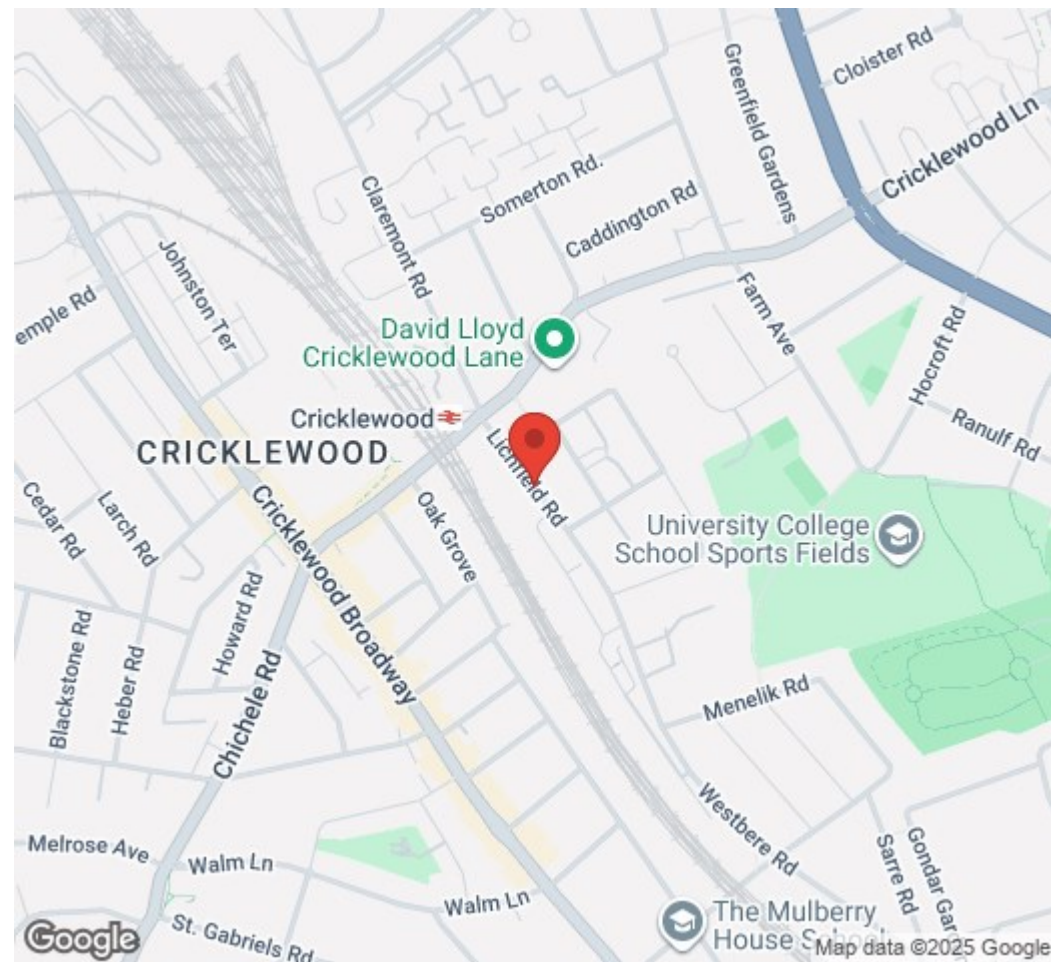
Disclaimer: Floorplan measurements are approximate and are for illustrative purposes only. While we do not doubt the floorplan accuracy and completeness, you or your advisors should conduct a careful, independent investigation of the property in respect of monetary valuation.



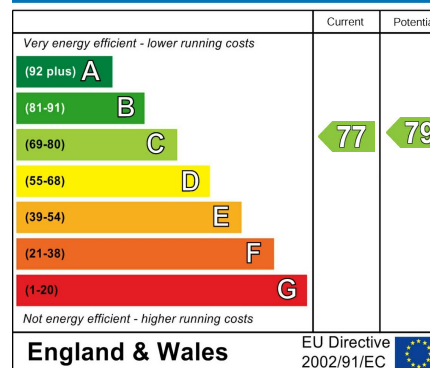
Trusted, every step of the way

90 Walm Lane, London, NW2 4QY
020 8451 9844

info@portlandestateagents.co.uk
www.portlandestateagents.co.uk



Energy Efficiency Rating



Environmental Impact (CO₂) Rating

