



Parkside



3 Chantler Lane

Broadbridge Heath, Horsham, RH12 3TW

£2,000 Per month

Parkside are delighted to offer this attractive four bedroom home, situated on the sought after Wickhurst Green development in Broadbridge Heath.

The property has been built to 'The Sherbourne' design and has been finished to a high specification.

The accommodation comprises: bright entrance hallway, cloakroom, open plan living accommodation, fully fitted contemporary kitchen with integrated appliances and tiled flooring, a bright and airy living room with french doors leading to the garden. On the first floor, the spacious master bedroom has fitted wardrobes and en suite shower room and there is also a study/nursery. The second floor has two double bedrooms and a modern fully tiled family bathroom with over bath shower.

The property benefits from double glazing and central heating. EPC- B
Please note all rooms are now neutrally decorated.

The rear garden is mainly laid to lawn with patio area and shed. The rear gate provides access to a pathway which leads to the front of the property, garage and allocated parking.

- Four bedrooms
- En suite
- Driveway parking
- Private garden
- Garage
- Cloakroom

Viewing

Please contact our Parkside Office on 01403 288745 if you wish to arrange a viewing appointment for this property or require further information.



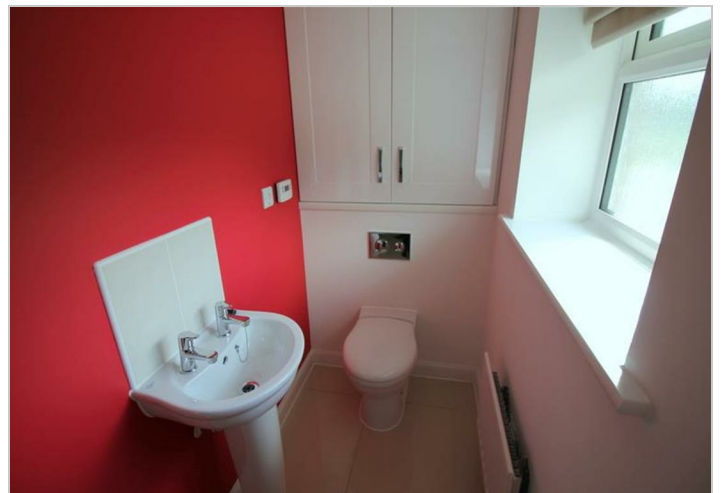
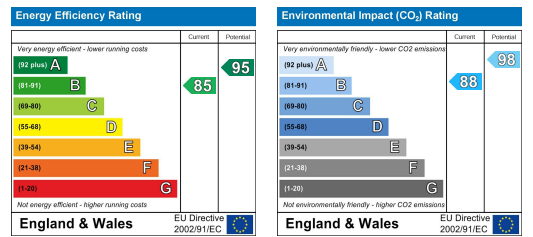
Floor Plan



Area Map



Energy Efficiency Graph



These particulars, whilst believed to be accurate are set out as a general outline only for guidance and do not constitute any part of an offer or contract. Intending purchasers should not rely on them as statements of representation of fact, but must satisfy themselves by inspection or otherwise as to their accuracy. No person in this firm's employment has the authority to make or give any representation or warranty in respect of the property.