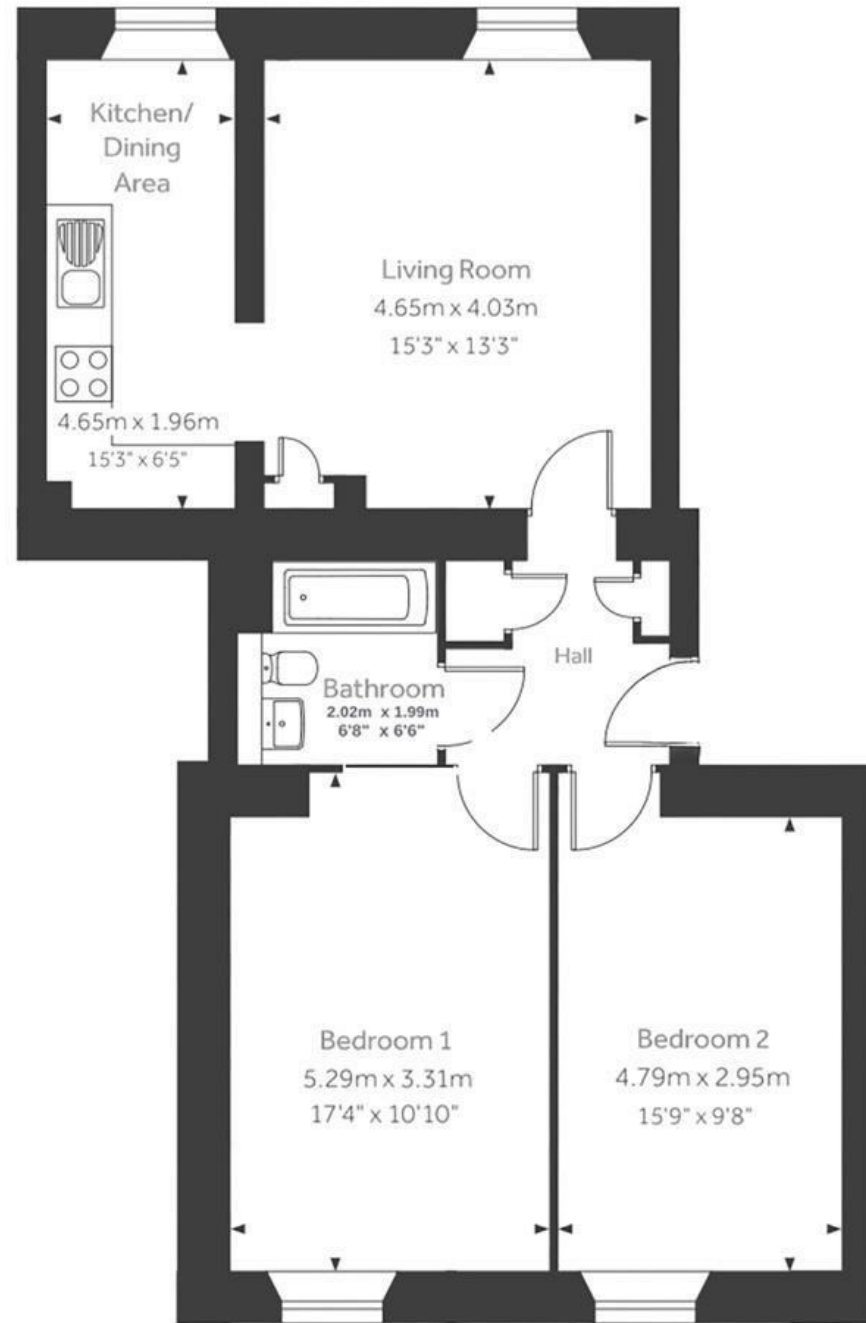


Captains House

FISHPONDS

APPROXIMATE FLOOR AREA
76 SQM / 818 SQFT



GROUND FLOOR

Illustrations are for reference purposes only, measurements are approximate, not to scale.

Boardwalk

Captains House

FISHPONDS, BRISTOL



£285,000



2 Bedrooms



BS16 2GX



1 Bathrooms

"We have really enjoyed living in our spacious, bright & airy flat. If we could pick it up & take it with us we would! It's very peaceful here, which has made working from home & relaxing effortless. It's great that we have the convenience of a One Stop a few steps away for the essentials. We'll really miss the food locally at Everyday Thai & Msala Ministry, plus hanging out at The All Inn, Crafty Egg & The White Lion for more food or drinks in the sunshine."

