

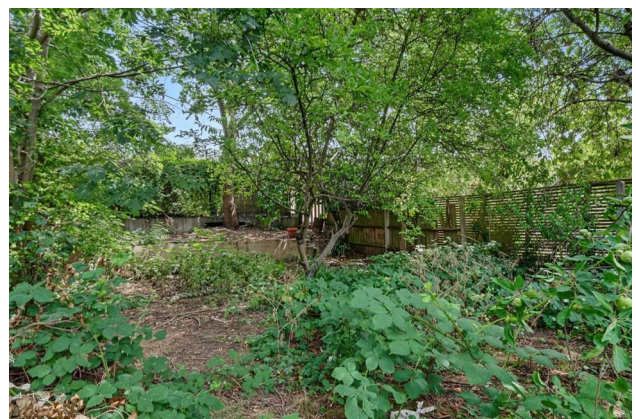
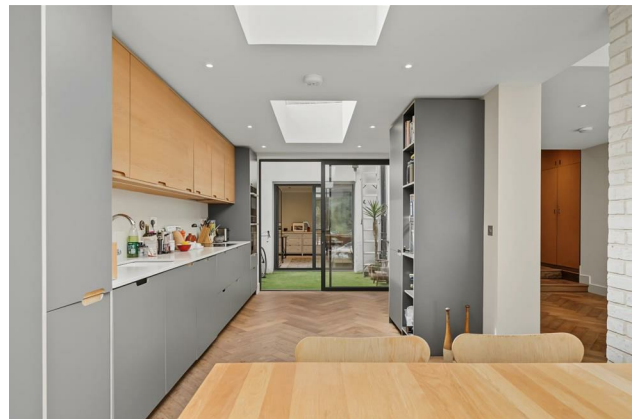
HUNTERS®

HERE TO GET *you* THERE

Queens Drive, London, N4

Asking Price £1,250,000

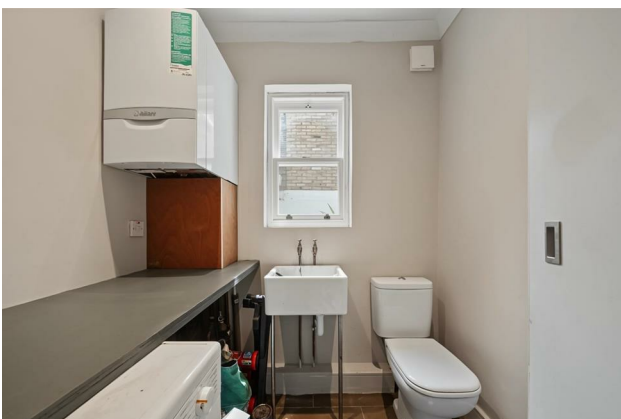
Property Images



HUNTERS®

HERE TO GET *you* THERE

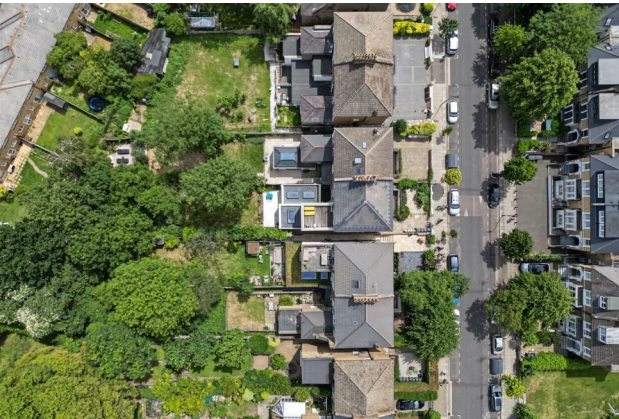
Property Images



HUNTERS®

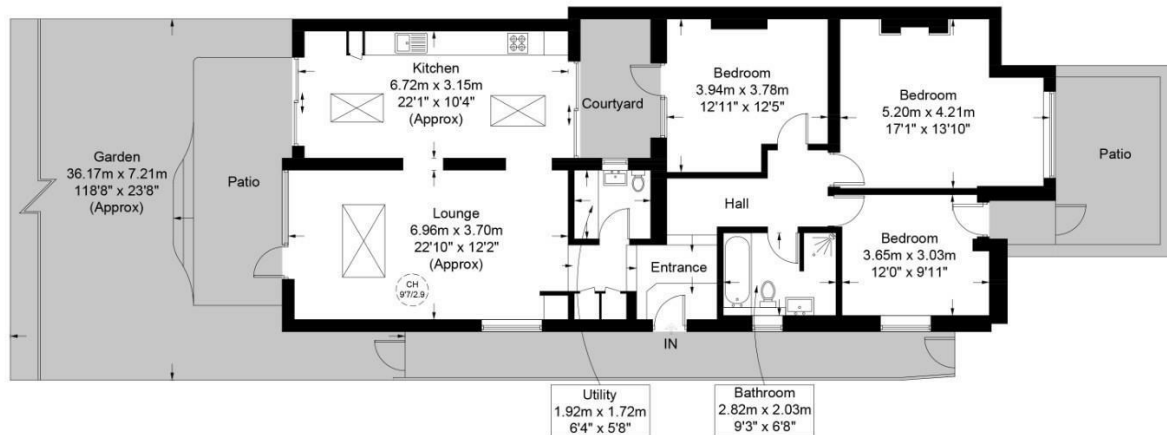
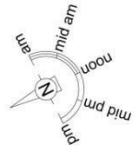
HERE TO GET *you* THERE

Property Images



Queens Drive, N4

Approximate Gross Internal Area = 1294 sq ft / 120.2 sq m



Ground Floor



This plan is for layout guidance only and is not drawn to scale unless stated. All dimensions, including windows, doors, and the Total Gross Internal Area (GIA), are approximate. For precise measurements, please consult a qualified architect or surveyor before making any decisions based on this plan.



EPC

Energy Efficiency Rating		Current	Potential
<i>Very energy efficient - lower running costs</i>			
(92 plus) A			
(81-91) B			
(69-80) C			
(55-68) D			
(39-54) E			
(21-38) F			
(1-20) G			
<i>Not energy efficient - higher running costs</i>			
England & Wales	EU Directive 2002/91/EC		

Map



Details

Type: Maisonette Beds: 3 Bathrooms: 1 Receptions: 1 Tenure: Share of Freehold

Occupying the lower ground floor of an attractive period conversion on the popular Queens Drive, this beautifully presented three-bedroom garden maisonette is offered with a share of freehold and boasts approximately 1,294 sq ft of stylish accommodation, benefitting from its own private entrance, private patio and direct access to a beautifully maintained communal garden.

The property has been significantly extended to create a stunning semi open-plan kitchen, dining and reception space, flooded with natural light from large skylights and full-width glazed doors opening onto the private patio. Finished with herringbone flooring, bespoke cabinetry and quality integrated appliances, it provides an exceptional space for both everyday living and entertaining.

There are three well-proportioned bedrooms, including an impressive principal bedroom, together with a contemporary family bathroom and a separate utility room with WC, offering excellent practicality for modern living.

The private patio provides the perfect setting for outdoor dining and relaxation before leading directly onto the beautifully maintained communal garden, creating a wonderful balance of private and shared outdoor space.

Queens Drive is conveniently positioned for the green open spaces of Clissold Park and Finsbury Park, while the cafés, restaurants and independent shops of Stoke Newington Church Street are all within easy reach. Excellent transport links are available from Finsbury Park, Manor House and Stoke Newington stations, together with numerous bus routes providing easy access across London.

Offering generous proportions, stylish contemporary living and excellent outdoor space, this impressive garden maisonette presents a fantastic opportunity to acquire a substantial period home in a highly convenient N4 location.

Features

• Share of Freehold • Three Bedroom Garden Maisonette • Own Private Entrance • Approx. 1,294 sq ft (120.2 sq m) • Stunning Extended Kitchen/Living Space • Private Patio with Communal Garden Access • Utility Room with Separate WC • Beautiful Period Conversion • Close to Clissold Park & Finsbury Park • Excellent Transport Links