



Redcliffe Gardens, SW10

£525 Per week

A spacious and well presented one bedroom second floor flat. The apartment benefits from period features such as high ceilings and embraces a bright and airy reception with space for dining, and a contemporary kitchen.

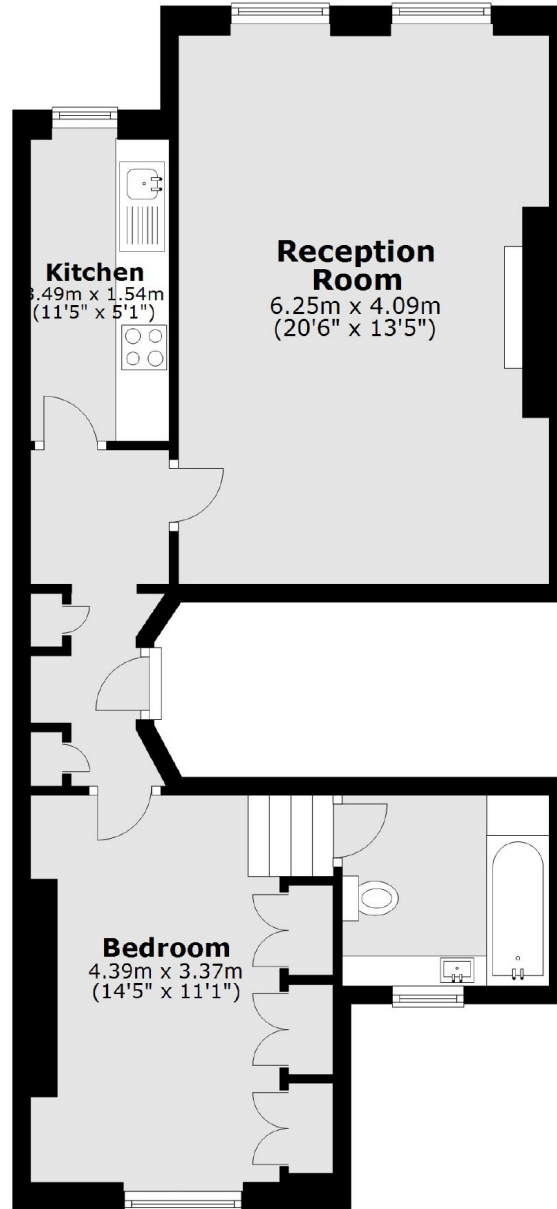
Located moments from Fulham Road. Excellent transport links - West Brompton, Earl's Court and Fulham Broadway stations are all within a mile of the flat.

Features

Second Floor
Spacious Double Bedroom
Separate Kitchen
Reception Dining Room
En Suite
Excellent Transport

Redcliffe Gardens,
London, SW10

Second Floor



Total area: approx. 57.3 sq. metres (616.4 sq. feet)