

**Lambert Road, SW2**

2 bedroom flat - conversion to let

**£623 Per Week**

Furnished

## Property Details

Keating Estates are proud to present to market this beautifully presented, split level, two-bedroom Victorian maisonette with a separate study, located on an attractive residential street at the end of a quiet cul-de-sac, nestled just off vibrant Brixton Hill. Offering over 1,000 square feet of internal living space, this spacious property is a rare find, boasting generous proportions throughout and access to a South-facing balcony.

## Features

- Two double bedrooms
- Two bathrooms
- Separate study
- Stylish split-level apartment
- Over 1000 square feet of internal living space
- Access to a South facing balcony
- Desirable road equidistant to Brixton
- Walking distance to Northern and Victoria tube lines
- Own front door
- Victorian maisonette

Council tax band D    EPC rating D (59)



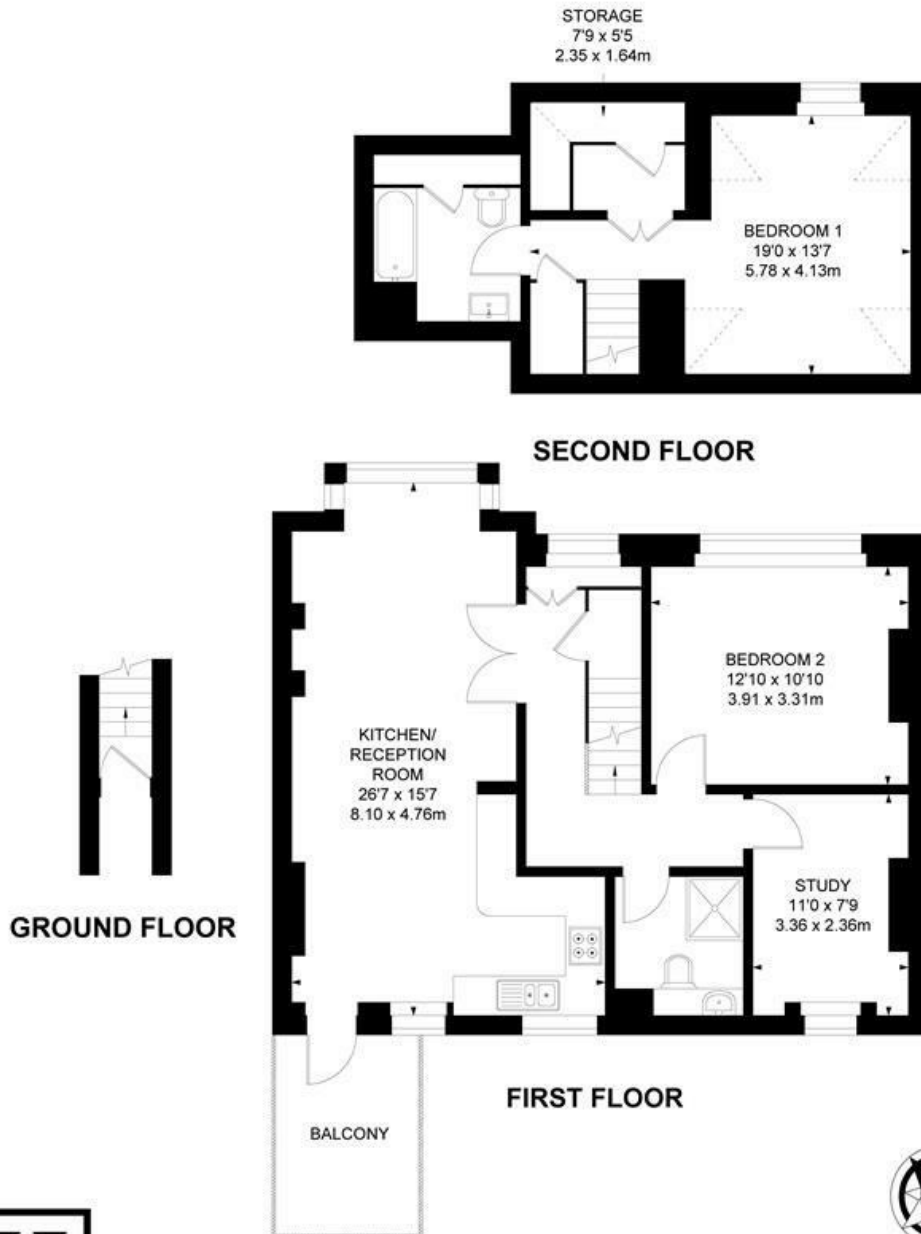
Lambert Road, SW2

**Lambert Road, SW2**

**3 Bedroom Flat**

APPROXIMATE GROSS INTERNAL AREA :

**1049 SQ FT / 97.49 SQ M**



While we try our very best, floor plans are produced as a guide only and we take no responsibility for the precise accuracy with which any property is represented.



Lambert Road, SW2

