

# £1,500 pcm

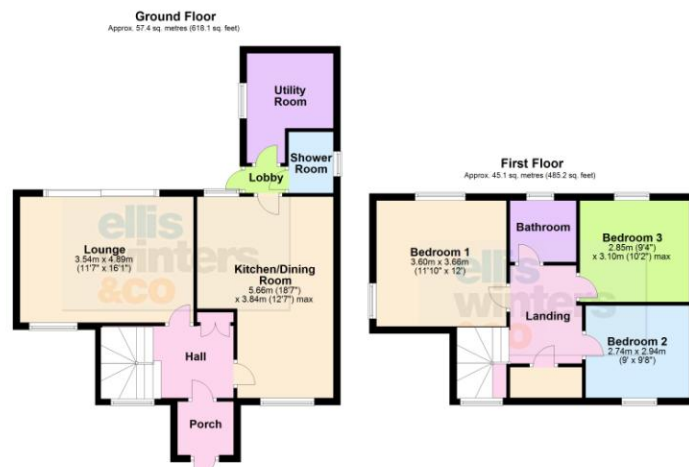
2 Hillside Road, March, PE15 8EX



To arrange a viewing call us now on 01354 701000

Deposit £1,730

Offered in lovely order this detached home is in a popular area with accommodation comprising generous kitchen/diner, utility room, ground floor shower room, lounge overlooking the garden, three good size bedrooms and first floor family bathroom. Outside there is parking, garage and nice size garden. EPC C



# £1,500 pcm

2 Hillside Road, March, PE15 8EX



Ground Floor

Porch

Hall

Kitchen/Dining Room

5.66m (18'7") x 3.84m (12'7") max  
Wall and base units, integral oven and hob,  
sink unit, w indow to front.



Lobby

Utility Room

Show er Room

Fitted w ith a three piece suite.

Lounge

4.89m (16'1") x 3.54m (11'7")  
Doors to garden, w indow to front.



First Floor

Landing

Bedroom 1

3.66m (12') x 3.60m (11'10")

Bedroom 2

2.94m (9'8") x 2.74m (9')

Bedroom 3

3.10m (10'2") max x 2.85m (9'4")



Bathroom

Fitted w ith a three piece suite, w indow to rear.

Outside

Garage, parking and garden

Freehold

Council tax band C



ellis winters 52 High Street, March, Cambridgeshire, PE15 9JR

Tel: 01354 701000 Email: [info@elliswinters.co.uk](mailto:info@elliswinters.co.uk) [www.elliswinters.co.uk](http://www.elliswinters.co.uk)

**ellis winters**  
sales & lettings since 2001

