



Verdant Lane, SE6

£1,700 Per calendar month

A well presented two bedroom flat offering a spacious lounge, two double bedrooms, bathroom, kitchen and a private section of the garden.

Located only moments away from a number of popular local bars and local amenities and is just 0.8 miles from Lee Station.

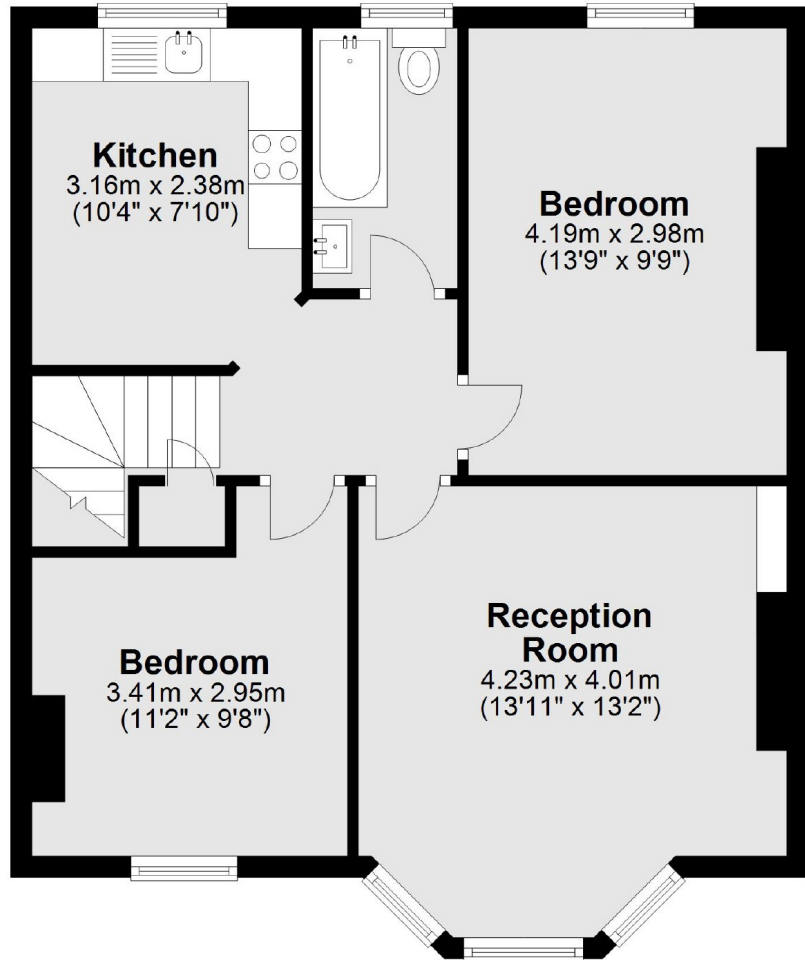
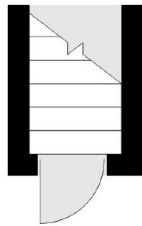
Features

- Two Double Bedrooms
- One Bathroom
- Part Furnished
- First Floor Flat
- Excellent Condition
- Good Location

Verdant Lane,
London, SE6

First Floor

Ground Floor



Total area: approx. 57.5 sq. metres (618.8 sq. feet)