



Drayton Gardens, SW10

£2,980,000

Dexters



Drayton Gardens, SW10

This elegant property, situated in a highly sought-after location, is crafted to the highest standards, offering both luxury and functionality.

The impressive reception room is adorned with a large bay window, showcasing west-facing views and providing access to a private balcony, perfect for enjoying outdoor moments. The expansive eat-in kitchen is an ideal space for hosting dinner parties and gatherings, combining modern design with a welcoming atmosphere. Additionally, the property features a separate studio located on the lower ground floor. This space is designed with the same meticulous attention to detail, featuring a large window that fills the room with natural light. It offers versatility for various uses, whether as a home office or additional living space.

The property seamlessly blends comfort and sophistication, making it an exceptional choice for those seeking refined living.

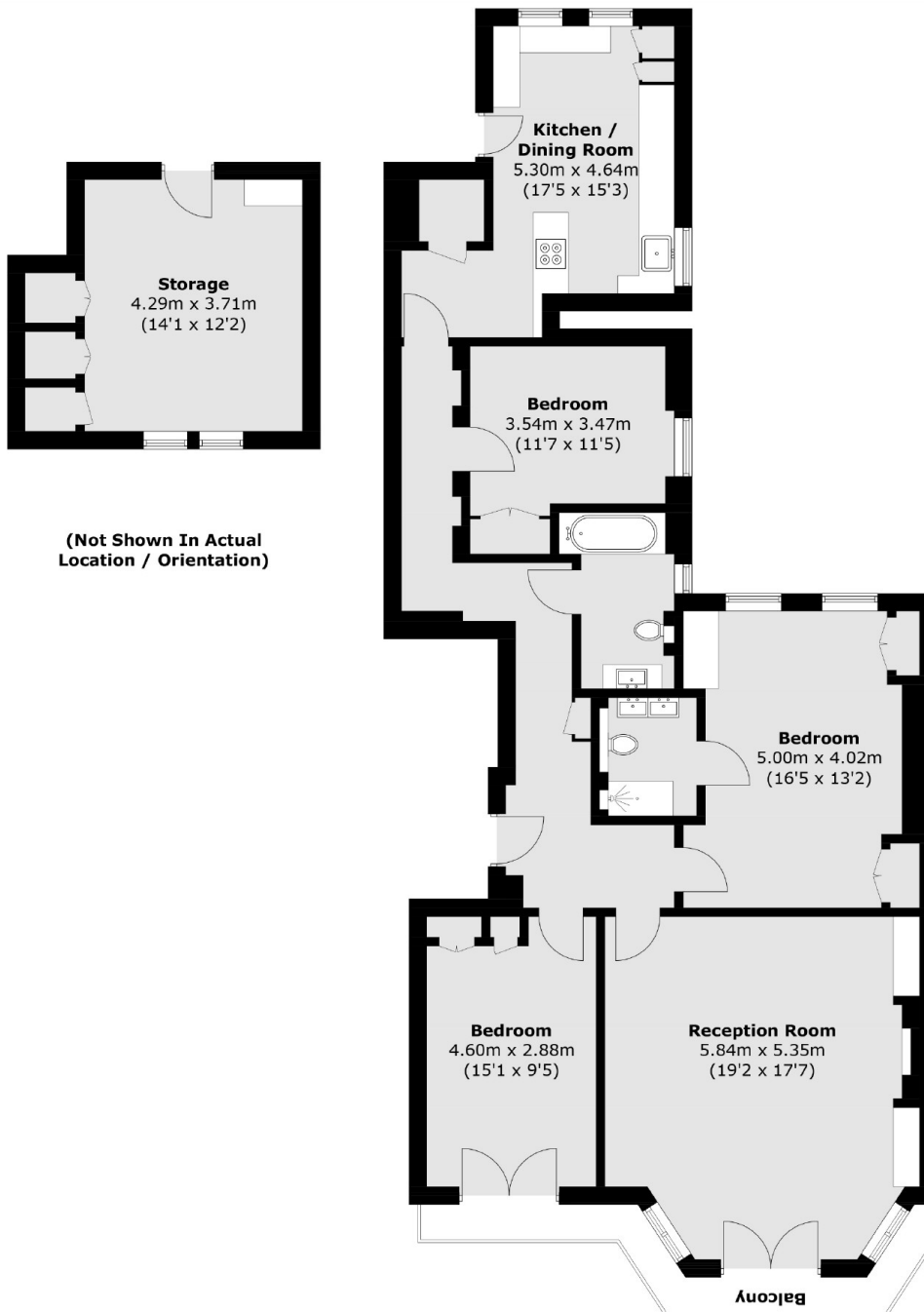
Drayton Gardens is a highly-desirable location at the heart of Chelsea and South Kensington. Both South Kensington and Gloucester Road underground stations (District, Circle and Piccadilly lines) are within walking distance.

Features

- First Floor
- Share Of Freehold
- Three Spacious Bedrooms
- Immaculate Finish
- Separate Studio
- No Ongoing Chain



Drayton Gardens, London, SW10



(Not Shown In Actual
Location / Orientation)

First Floor

Total area (approx.): 120.3 sq. m (1,294.9 sq. ft)

Storage (approx.): 18.8 sq. m (202.4 sq. ft)

Balcony (approx.): 6.0 sq. m (64.6 sq. ft)