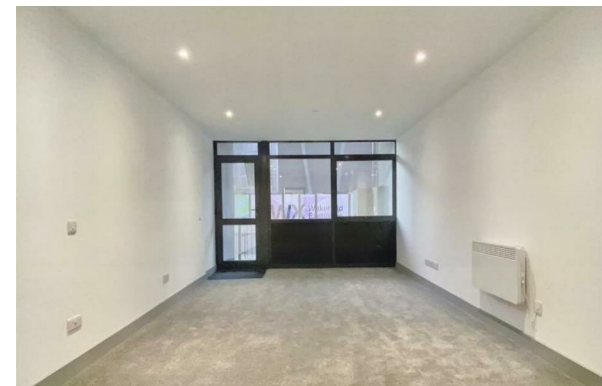




RESIDENTIAL



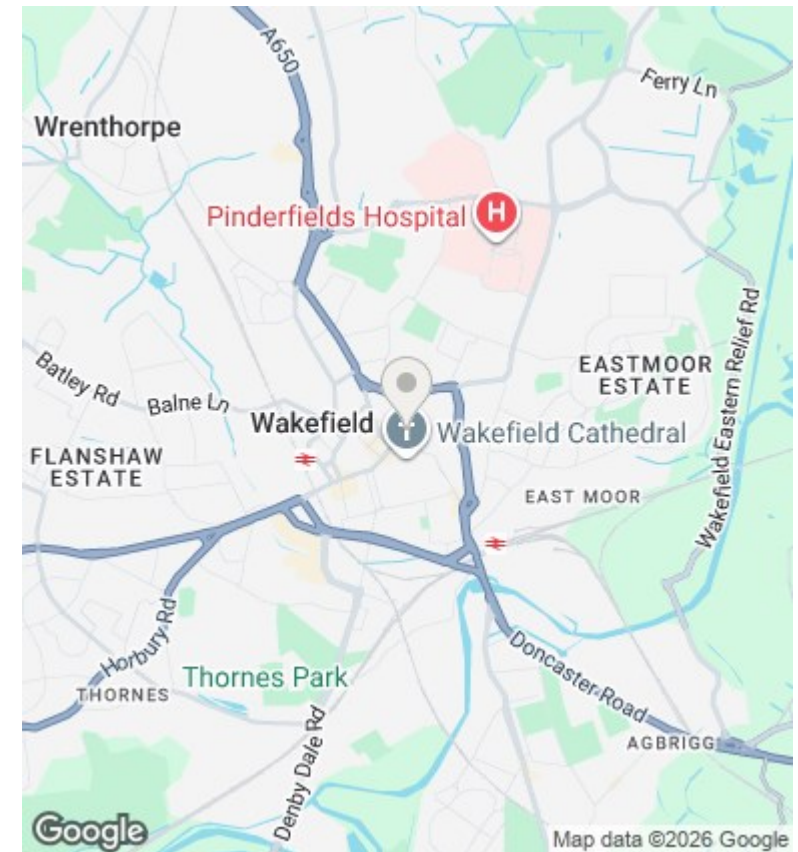
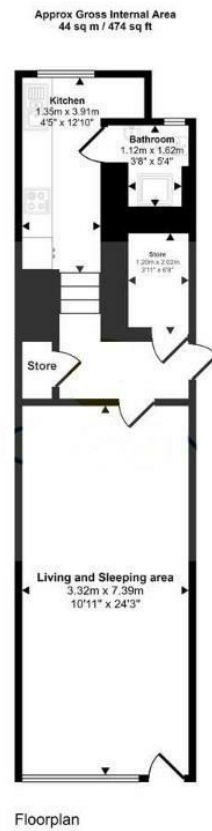
Grosvenor House, 008 Union Street, Wakefield, WF1 3FJ

£85,000

- Sold with Tenant in Situ
- Generating 8% NET Yield
- Contemporary Kitchen with Integrated Appliances
- City centre location with excellent transport links
- Private and secure intercom access
- Ground floor studio apartment

Unit 1 Feast Field, Horsforth, Leeds, LS18 4TJ
0113 3224 345

info@tkiproperty.co.uk
www.tkiproperty.co.uk



Directions

Viewings

Viewings by arrangement only. Call 0113 3224 345 to make an appointment.

Council Tax Band

EPC Rating:

D

Energy Efficiency Rating		
	Current	Potential
Very energy efficient - lower running costs		
(92 plus) A		
(81-91) B		
(69-80) C		
(55-68) D	67	67
(39-54) E		
(21-38) F		
(1-20) G		
Not energy efficient - higher running costs		
England & Wales		EU Directive 2002/91/EC