



## Southampton Road, NW5

£1,250,000

A stunning duplex maisonette offering four generous double bedrooms, three bathrooms and three private terraces, all presented in immaculate condition throughout.

Southampton Road is located 0.6 miles to Chalk Farm underground station (Northern line) and 0.8 miles to Kentish Town West station. It is also within easy reach of Hampstead Heath, Belsize Park and Primrose Hill.

### Features

- Four Double Bedrooms
- Three Bathrooms
- Private Entrance
- Three Terraces
- Guest WC
- Share of Freehold



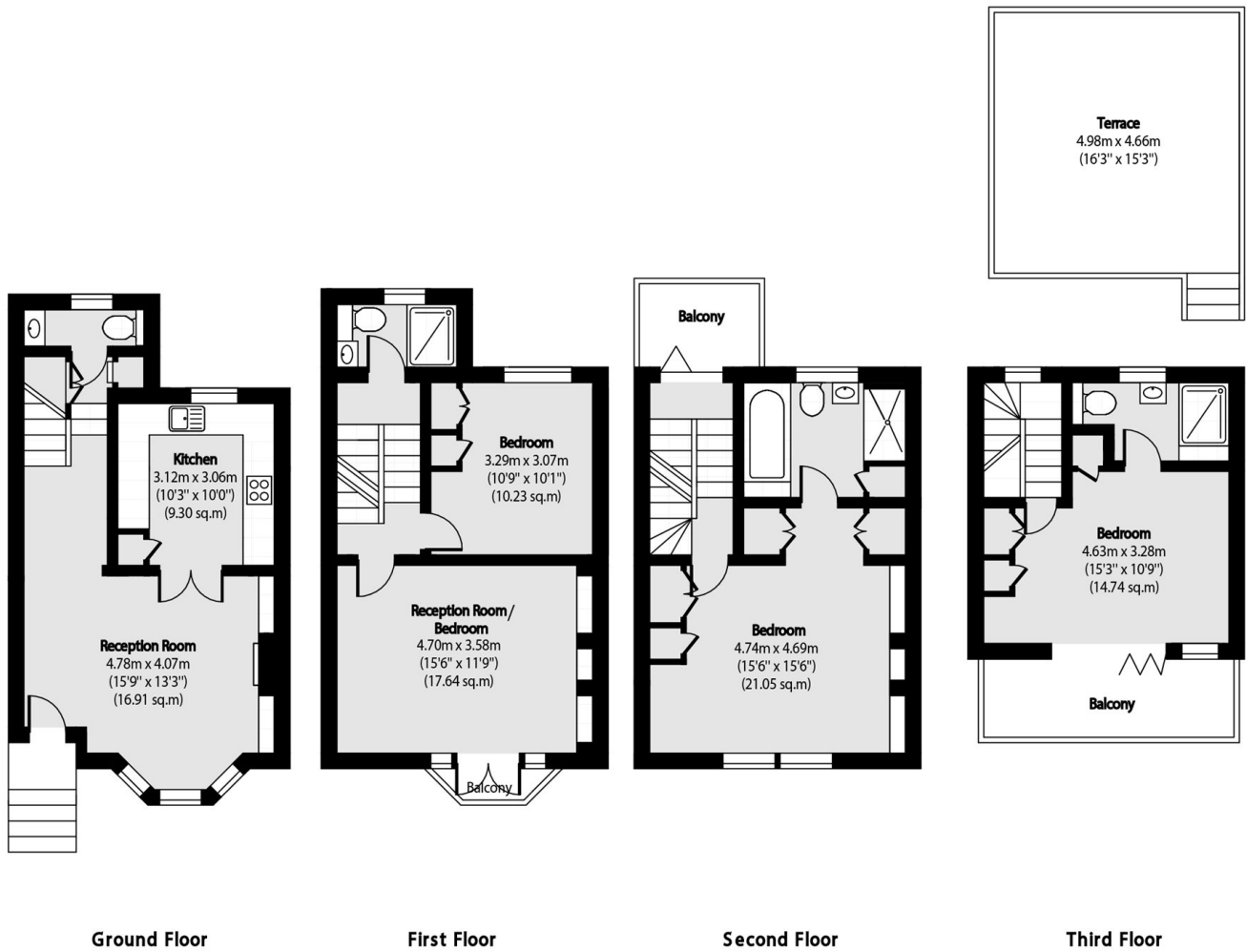
## Southampton Road, NW5

As you enter the apartment on the ground floor there is a large reception room, a separate kitchen and a guest WC. On the first floor there is a second reception room / bedroom, a double bedroom, a family bathroom and a balcony.

The principal bedroom is on the second floor with a walk through wardrobe, a large bathroom and a balcony. On the third floor there is a fourth bedroom with an en suite bathroom and access to the third terrace. There is also an exceptional 253 sq ft private roof terrace, providing breathtaking 360 degree panoramic views across the London skyline.



# Southampton Road, London, NW5



Total area (approx): 133.51 sq m (1437 sq. ft)

Balcony total area (approx): 11.96 sq m (129 sq. ft)

Terrace total area (approx): 23.50 sq m (253 sq. ft)