



**St Peter's, Ellachie Mews, Gosport, PO12 2DR**

**welcome to**

## **St Peter's Ellachie Mews, Gosport**

-- Unique Detached Family Home -- Situated in Heart of Alverstoke -- Ample Off Road Parking -- Double Garage With Electric Door -- No Onward Chain -- Flexible Accommodation - Annex --

### **Hall**

#### **Dining Room**

14' 10" max x 9' 8" max ( 4.52m max x 2.95m max )

#### **Kitchen**

13' 11" max x 5' 11" max ( 4.24m max x 1.80m max )

#### **Lounge**

14' 10" max x 11' 7" max ( 4.52m max x 3.53m max )

#### **Reception Room**

15' 2" max x 11' 8" max ( 4.62m max x 3.56m max )

### **W C**

### **On The First Floor**

#### **Bedroom 1**

13' 1" max x 11' 7" max ( 3.99m max x 3.53m max )

#### **Bedroom 2**

12' max x 9' 9" max ( 3.66m max x 2.97m max )

#### **Bedroom 3**

11' 5" max x 8' 4" max ( 3.48m max x 2.54m max )

#### **Bathroom**

### **Annex**

#### **Lounge**

19' 7" max x 14' 10" max ( 5.97m max x 4.52m max )

#### **Bedroom**

19' 7" max x 11' 10" max ( 5.97m max x 3.61m max )

#### **En-Suite**

#### **Garage**

18' 6" max x 11' 11" max ( 5.64m max x 3.63m max )

### **Enclosed Garden**





***view this property online*** [fox-and-sons.co.uk/Property/GOS113110](https://fox-and-sons.co.uk/Property/GOS113110)



welcome to

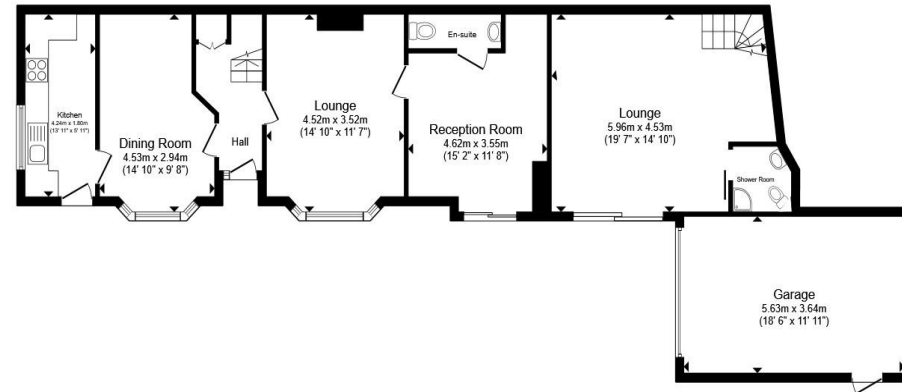
## St Peter's Ellachie Mews, Gosport

- Unique Detached Family Home
- Situated in Heart of Alverstoke
- Ample Off Road Parking
- Double Garage With Electric Door
- No Onward Chain

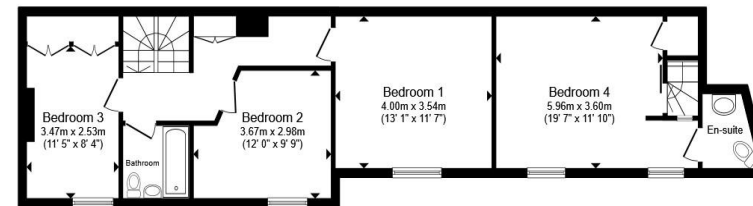
Tenure: Freehold EPC Rating: D

Council Tax Band: D

**£550,000**



Ground Floor



First Floor

Total floor area 173.9 m<sup>2</sup> (1,872 sq.ft.) approx

This floor plan is for illustrative purposes only. It is not drawn to scale. Any measurements, floor areas (including any total floor area), openings and orientation are approximate. No details are guaranteed, they cannot be relied upon for any purpose and they do not form part of any agreement. No liability is taken for any error, omission or misstatement. A party must rely upon its own inspection(s). Powered by [www.propertybox.io](http://www.propertybox.io)



view this property online [fox-and-sons.co.uk/Property/GOS113110](http://fox-and-sons.co.uk/Property/GOS113110)



Property Ref:  
GOS113110 - 0002

1. MONEY LAUNDERING REGULATIONS Intending purchasers will be asked to produce identification documentation at a later stage and we would ask for your co-operation in order that there is no delay in agreeing the sale. 2. These particulars do not constitute part or all of an offer or contract. 3. The measurements indicated are supplied for guidance only and as such must be considered incorrect. Potential buyers are advised to recheck measurements before committing to any expense. 4. We have not tested any apparatus, equipment, fixtures or services and it is in the buyers interest to check the working condition of any appliances. 5. Where an EPC, or a Home Report (Scotland only) is held for this property, it is available for inspection at the branch by appointment. If you require a printed version of a Home Report, you will need to pay a reasonable production charge reflecting printing and other costs. 6. We are not able to offer an opinion either written or verbal on the content of these reports and this must be obtained from your legal representative. 7. Whilst we take care in preparing these reports, a buyer should ensure that his/her legal representative confirms as soon as possible all matters relating to title including the extent and boundaries of the property and other important matters before exchange of contracts.

Fox & Sons is a trading name of Sequence (UK) Limited which is registered in England and Wales under company number 4268443, Registered Office is Cumbria House, 16-20 Hockliffe Street, Leighton Buzzard, Bedfordshire, LU7 1GN. VAT Registration Number is 500 2481 05.



**023 9250 3733**



[Gosport@fox-and-sons.co.uk](mailto:Gosport@fox-and-sons.co.uk)



10 High Street, GOSPORT, Hampshire, PO12 1BX



[fox-and-sons.co.uk](http://fox-and-sons.co.uk)