



Guide Price
£625,000

Freehold

4x  3x  2x 

**Marine View, St. Mary's
Island, Chatham, Kent,
ME4**

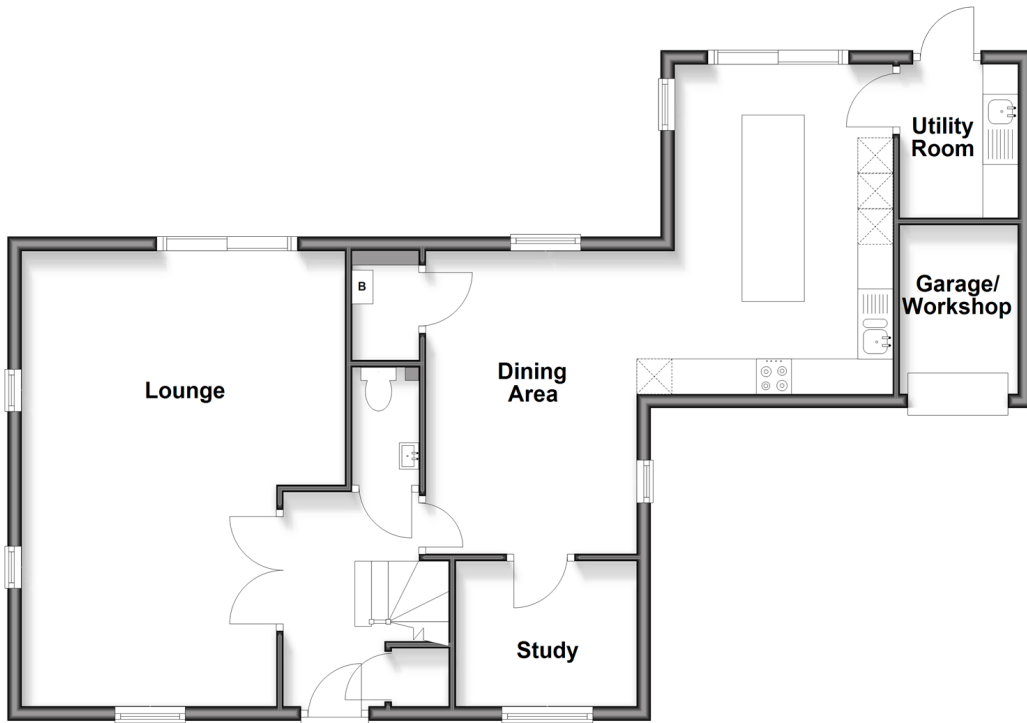
OVER 60?

Secure this property
for up to **59% less!**

Wards
Helping you move forwards

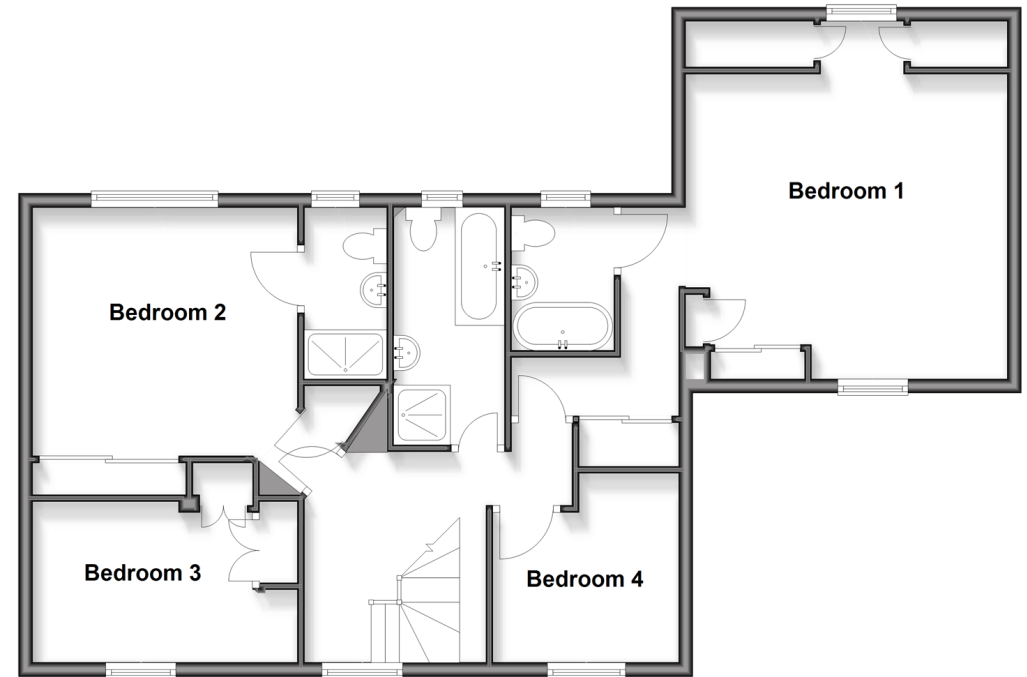
Ground Floor

Approx. 80.8 sq. metres (869.8 sq. feet)



First Floor

Approx. 83.2 sq. metres (895.8 sq. feet)



Accommodation

GROUND FLOOR

Entrance Hall

Lounge: 21'3 x 11'11 (6.48m x 3.63m)

Dining Area: 14'10 x 9'10 (4.52m x 3.00m)

Study: 8'1 x 6'8 (2.47m x 2.03m)

Kitchen: 15'10 x 10'4 (4.83m x 3.15m)

Cloakroom: 5'8 x 3'1 (1.73m x 0.94m)

Utility Room: 8'1 x 5'7 (2.47m x 1.70m)

FIRST FLOOR

Bedroom 1: 17'1 x 14'0 (5.21m x 4.27m)

En-suite Shower Room: 6'8 x 4'11 (2.03m x 1.50m)

Bedroom 2: 11'2 x 11'2 (3.41m x 3.41m)

En-suite Shower Room: 8'0 x 3'10 (2.44m x 1.17m)

Bedroom 3: 12'8 x 7'5 (3.86m x 2.26m)

Bedroom 4: 9'1 x 8'9 (2.77m x 2.67m)

Bathroom: 8'1 x 5'1 (2.47m x 1.55m)

OUTSIDE

Front Garden

Rear Garden

Driveway

Workshop (Former Garage): 7'11 x 5'10 (2.41m x 1.78m)



Main features

- Extended detached house in popular location
- Additional downstairs space with utility room and study
- Downstairs toilet, family bathroom and two en-suite shower rooms
- Perfect purchase for a family needing more space
- Perfect location as within walking distance to Dockside, which offers transport links, restaurants, gym and cinema



Nearest Schools

Primary Schools: St Mary's Island C of E (Aided) Primary 0.4 miles, St Mary's Catholic Primary 1.2 miles, Hoo St Werburgh Primary and Marlborough Centre 1.3 miles

Secondary Schools: Chatham Grammar School for Girls



Transport Information

Train Stations: Gillingham 2.4 miles, Chatham 2.8 miles, Strood 3.4 miles



Address

Marine View, St. Mary's Island, Chatham, Kent, ME4



Directions

For directions to this property please contact us.



Wards
Helping you move forwards

Call Chatham Branch 01634 841243 ■ wardsofkent.co.uk



- Legal advice should be taken to verify fixtures/fittings, planning, alterations and/or lease details
- Appliances & services are untested, dimensions are approximate and floor plans are not to scale
- Through a Homewise Home For Life Plan people aged 60+ can secure this property for up to 50% less, by purchasing a Lifetime Lease.



EPC RATING



10435906/20251002/BC/RC