



Connells

Keyham Court
Peterborough



Property Description

This charming two-bedroom mid-terraced home offers a warm and inviting living space ideal for first-time buyers, downsizers, or investors. Well-presented throughout, the property features a comfortable layout that blends practicality with homely character.

Upon entering, you are welcomed into a bright living room, perfect for relaxing or entertaining. Beyond this sits a modern, well-equipped kitchen/dining area, offering ample storage and workspace.

Upstairs, the home provides two well-proportioned bedrooms, each offering a peaceful retreat, along with a neatly presented family bathroom.

To the rear, you'll find a fully enclosed garden, providing a secure and private outdoor space suitable for children, pets, or low-maintenance enjoyment. A gate leads out to the communal parking area, ensuring convenient off-road parking close to the property.

Situated in a popular and convenient location, this property is within easy reach of local shops, schools, transport links, and green spaces—making it an excellent choice for a range of buyers seeking comfort and practicality.

Entrance Hall

Door to front, stairs to first floor.

Lounge

Patio doors to the rear, radiator and laminate flooring.

Kitchen

Window to the front, integrated oven, induction hob and hob, high and low level storage with worktops over, stainless steel sink/drainer, space for appliances.

First Floor

Bedroom One

Window to rear, carpet and radiator.

Bedroom Two

Window to the front, carpet and radiator.

Bathroom

Bath with shower over, WC, tiled splashbacks and wash hand basin.

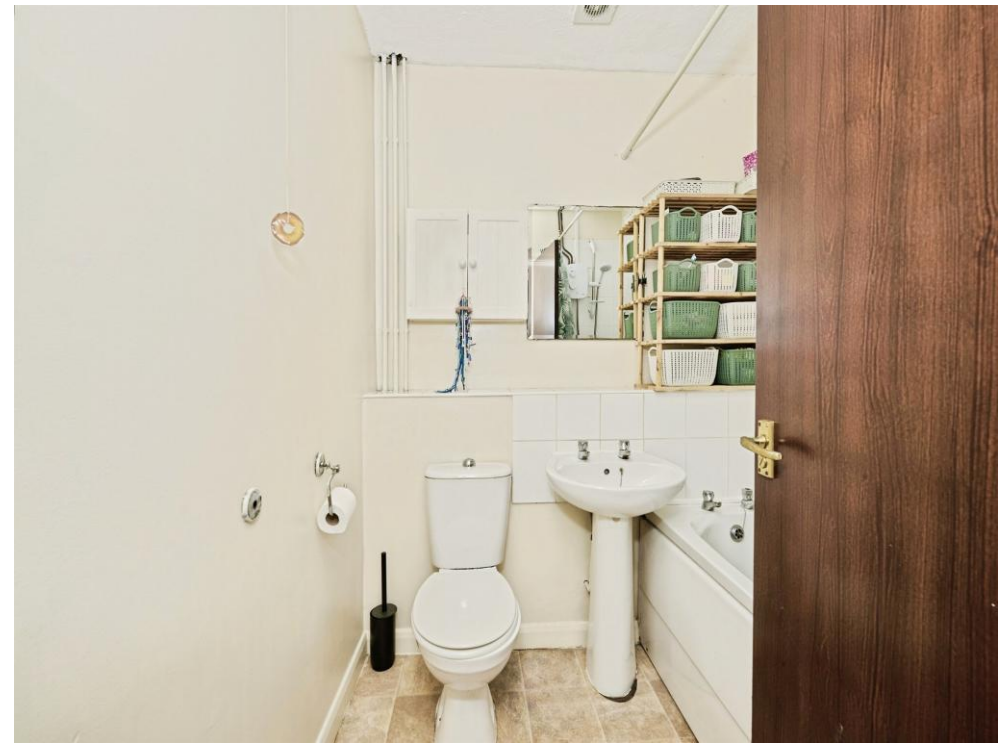
Outside

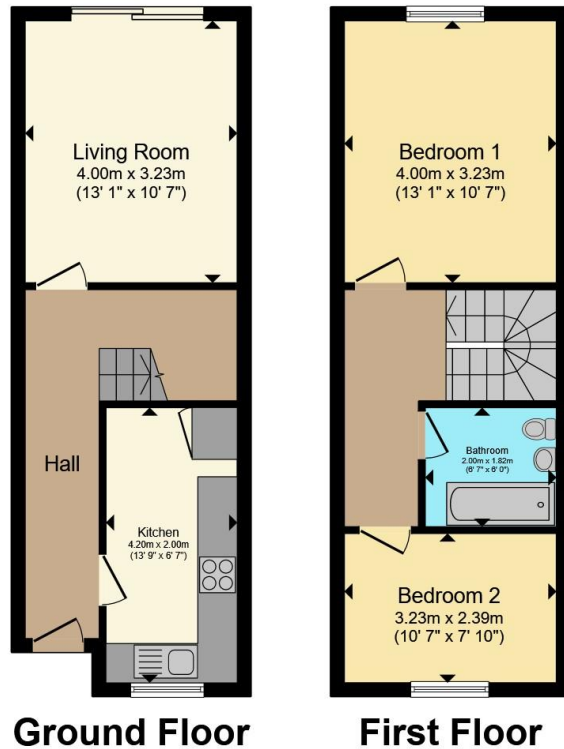
Rear Garden

Astro turf, patio, gated access.

Parking

Communal to the rear.





Total floor area 64.4 m² (693 sq.ft.) approx

This floor plan is for illustrative purposes only. It is not drawn to scale. Any measurements, floor areas (including any total floor area), openings and orientation are approximate. No details are guaranteed, they cannot be relied upon for any purpose and they do not form part of any agreement. No liability is taken for any error, omission or misstatement. A party must rely upon its own inspection(s). Powered by www.propertybox.io



To view this property please contact Connells on

T 01733 314 775
E peterborough@connells.co.uk

14 Cowgate
 PETERBOROUGH PE1 1NA

EPC Rating: C Council Tax Band: A

view this property online connells.co.uk/Property/PBO312654

Tenure: Freehold



1. MONEY LAUNDERING REGULATIONS Intending purchasers will be asked to produce identification documentation at a later stage and we would ask for your co-operation in order that there will be no delay in agreeing the sale. 2. These particulars do not constitute part or all of an offer or contract. 3. The measurements indicated are supplied for guidance only and as such must be considered incorrect. Potential buyers are advised to recheck measurements before committing to any expense. 4. We have not tested any apparatus, equipment, fixtures, fittings or services and it is in the buyers interest to check the working condition of any appliances.

Connells Residential is registered in England and Wales under company number 1489613, Registered Office is Cumbria House, 16-20 Hockliffe Street, Leighton Buzzard, Bedfordshire, LU7 1GN. VAT Registration Number is 500 2481 05.

See all our properties at www.connells.co.uk | www.rightmove.co.uk | www.zoopla.co.uk

Property Ref: PBO312654 - 0003