



Cuckoo Way, Northstowe Cambridge  
**£280,000** **Freehold**

**Sharman  
Quinney**

# Key Features



- End Terrace
- Two Double Bedrooms
- Spacious living with direct access to garden
- Allocated Parking
- Well-sized rear garden
- Integrated kitchen appliances
- Desirable Location

Upon entering the property, you are welcomed into a central hallway that offers excellent built in storage options, ideal for coats, cleaning items, or everyday essentials. Immediately to the right is the well proportioned kitchen, providing generous workspace and integrated appliances. To the rear of the home sits the spacious living room, a bright and comfortable space featuring double patio doors that open directly onto the garden, a convenient W.C completes the ground floor layout.

The first floor comprises two well sized bedrooms. The master bedroom offers generous space for a double bed and storage, while the second bedroom works perfectly as a second bedroom,

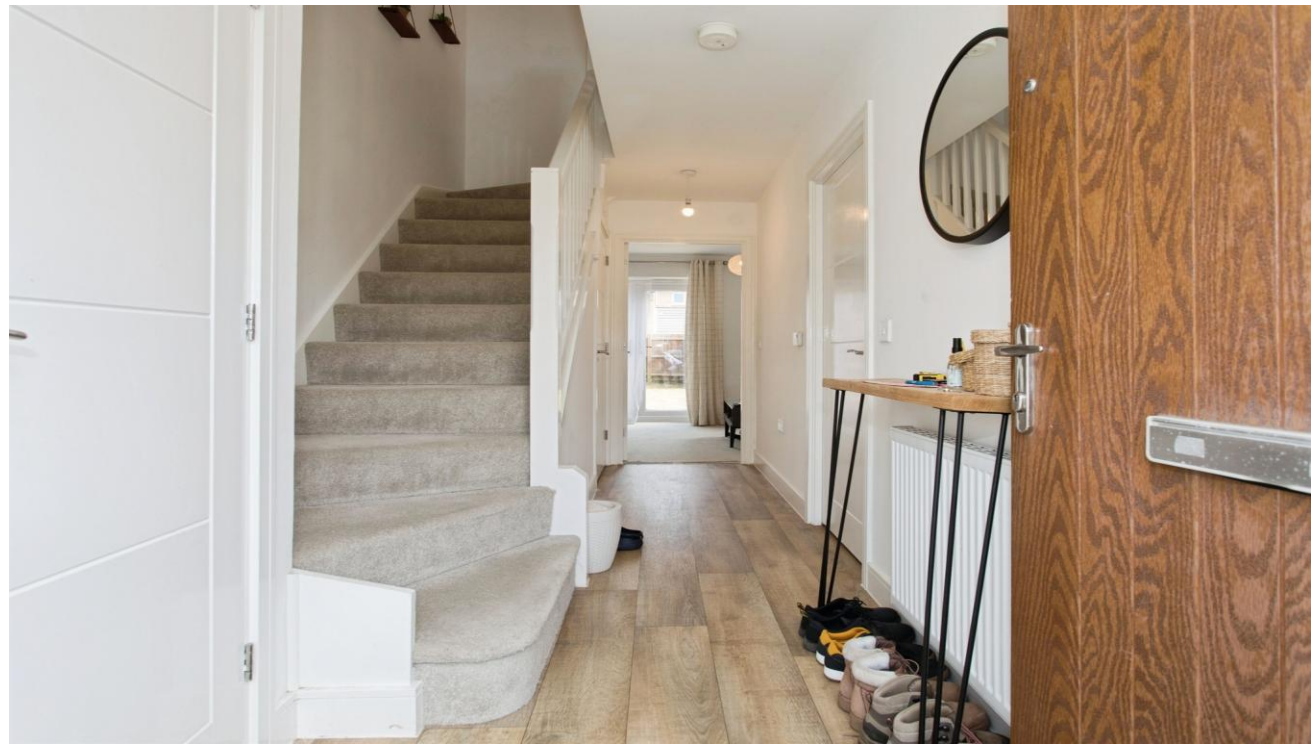


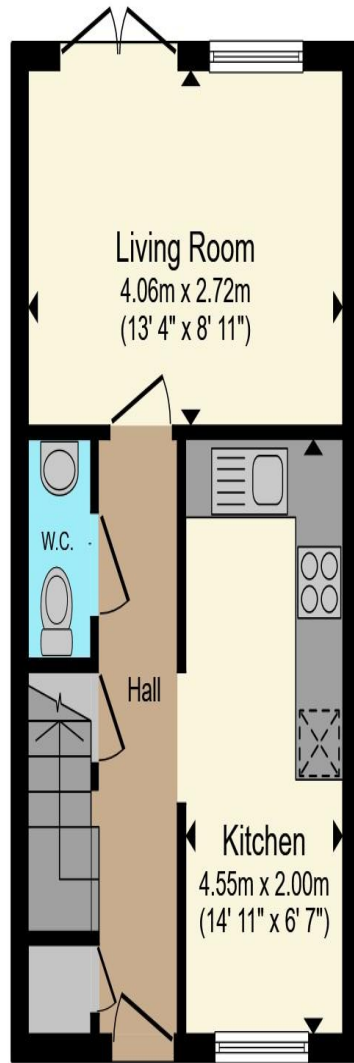
guest room, or home office and also includes built in storage. The family bathroom includes a modern suite, and the landing provides access to all rooms on this floor.

Externally, the property benefits from a low maintenance front garden, ideal for easy upkeep, along with a well sized rear garden offering plenty of outdoor space for relaxing or entertaining. The home also includes allocated parking for one car, providing convenient and secure off street parking. Externally, the property benefits from a well sized rear garden.

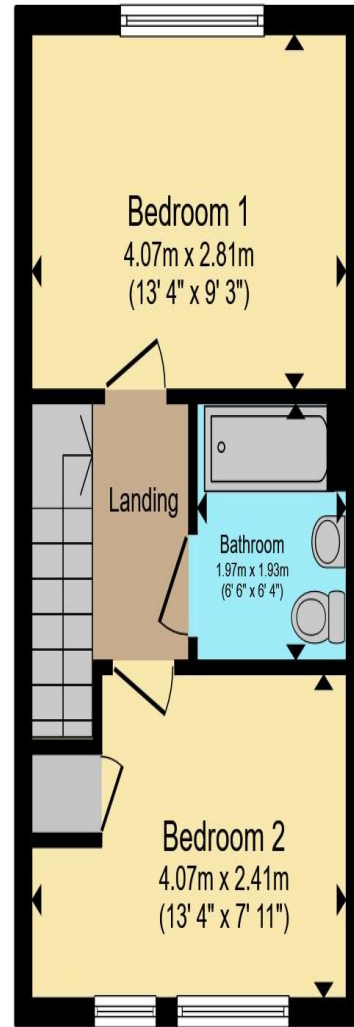
Positioned within the popular developing community of Northstowe, the property enjoys excellent connectivity to the wider Cambridge area. Residents benefit from convenient access to Cambridge city centre, Cambridge North Station, the Science Park and Addenbrooke's Hospital, all easily reached via the guided busway, as well as the A14 and M11 for straightforward road links.

\*All measurements are stated on the floor plan\*





**Ground Floor**



**First Floor**

Total floor area 59.0 m<sup>2</sup> (635 sq.ft.) approx

This floor plan is for illustrative purposes only. It is not drawn to scale. Any measurements, floor areas (including any total floor area), openings and orientation are approximate. No details are guaranteed, they cannot be relied upon for any purpose and they do not form part of any agreement. No liability is taken for any error, omission or misstatement. A party must rely upon its own inspection(s). Powered by [www.propertybox.io](http://www.propertybox.io)

**Sharman  
Quinney**

To view this property call Sharman Quinney on:  
**01223 426139**

# Selling your property?

Contact us to arrange a **FREE** home valuation.

 01223 426139

 Unit 5 Orchard House Unwin Square, Orchard Park, CAMBRIDGE, Cambridgeshire, CB4 2AD

 orchardpark@sharmanquinney.co.uk

 [www.sharmanquinney.co.uk](http://www.sharmanquinney.co.uk)



 SCAN ME



Sharman Quinney Holdings Limited is registered in England and Wales under company number 4174227, Registered Office is Cumbria House, 16-20 Hockliffe Street, Leighton Buzzard, Bedfordshire, LU7 1GN. VAT Registration Number is 500 2481 05.

1: These particulars do not constitute part or all of an offer or contract. 2: The measurements indicated are supplied for guidance only and as such must be considered incorrect. 3: Potential buyers are advised to recheck the measurements before committing to any expense. 4: Sharman Quinney has not tested any apparatus, equipment, fixtures, fittings or services and it is the buyers interests to check the working condition of any appliances. 5: Sharman Quinney has not sought to verify the legal title of the property and buyers must obtain verification from their legal representative. 6: Intending purchasers will be asked to produce identification documentation at a later stage and we would ask your co-operation in order that there will be no delay in agreeing the sale. Ref: ORP102191 - 0001

