

for sale

£80,000



## Wheathill Way Milborne Port Sherborne DT9 5EZ

Two-bedroom ground floor shared ownership apartment (50% share) with entrance hall and storage, lounge, separate kitchen, two bedrooms, and bathroom. Includes communal outside space with bin store.



# Wheathill Way Milborne Port Sherborne DT9 5EZ

## Entrance Hall

Two storage cupboards and a radiator.

## Lounge

Double glazed window to the front, television aerial socket and a telephone point.

## Kitchen

Double glazed window and door to the rear, fitted kitchen with wall and base units, electric and gas cooker points, stainless steel sink and drainer, plumbing for a washing machine, space for a fridge/freezer, wall mounted gas central heating boiler, radiator and a telephone point.



## Bedroom One

Double glazed window to the front, television aerial socket and a radiator.

## Bedroom Two

Double glazed window to the rear, telephone point, television aerial socket and a radiator.

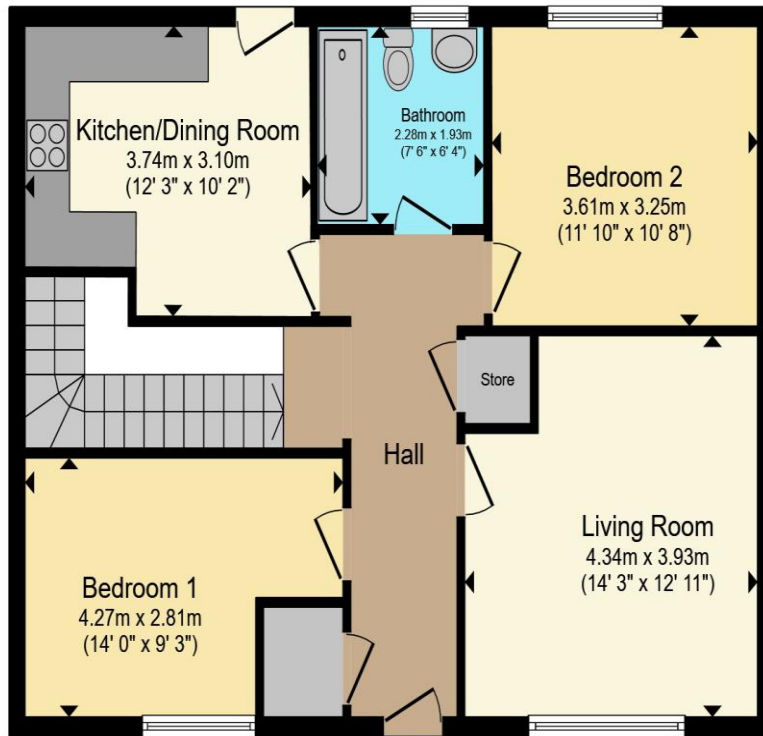
## Bathroom

Double glazed window to the rear, bath with an electric shower over, WC, wash hand basin and a heated towel rail.

## Outside Space

Communal outside space with a bin store and seating area.





## Ground Floor

Total floor area 73.5 m<sup>2</sup> (792 sq.ft.) approx

This floor plan is for illustrative purposes only. It is not drawn to scale. Any measurements, floor areas (including any total floor area), openings and orientation are approximate. No details are guaranteed, they cannot be relied upon for any purpose and they do not form part of any agreement. No liability is taken for any error, omission or misstatement. A party must rely upon its own inspection(s). Powered by [www.propertybox.io](http://www.propertybox.io)



To view this property please contact Connells on

**T 01935 812 155**  
**E [sherborne@connells.co.uk](mailto:sherborne@connells.co.uk)**

92 Cheap Street  
 SHERBORNE DT9 3BJ

Property Ref: SHR306627 - 0007

Tenure: Leasehold EPC Rating: C

Council Tax Band: A Service Charge: 339.04

Ground Rent: 5.00

**view this property online [connells.co.uk/Property/SHR306627](http://connells.co.uk/Property/SHR306627)**

This is a Leasehold property with details as follows; Term of Lease 99 years from 01 Apr 2006. Should you require further information please contact the branch. Please Note additional fees could be incurred for items such as Leasehold packs.

1. MONEY LAUNDERING REGULATIONS Intending purchasers will be asked to produce identification documentation at a later stage and we would ask for your co-operation in order that there will be no delay in agreeing the sale. 2. These particulars do not constitute part or all of an offer or contract. 3. The measurements indicated are supplied for guidance only and as such must be considered incorrect. Potential buyers are advised to recheck measurements before committing to any expense. 4. We have not tested any apparatus, equipment, fixtures, fittings or services and it is in the buyers interest to check the working condition of any appliances.

Connells Residential is registered in England and Wales under company number 1489613, Registered Office is Cumbria House, 16-20 Hockliffe Street, Leighton Buzzard, Bedfordshire, LU7 1GN. VAT Registration Number is 500 2481 05.

