



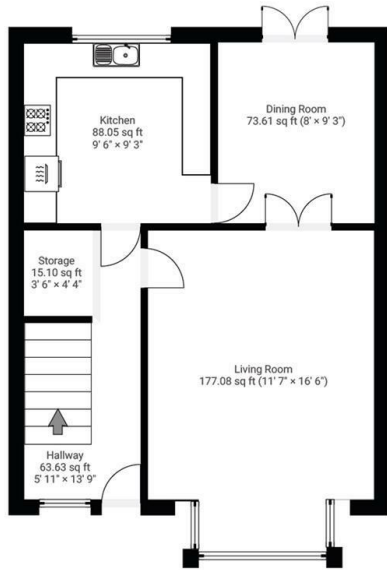
12 Layton Drive, Old Whittington, Chesterfield, S41 9HX

Offers In The Region Of £295,000

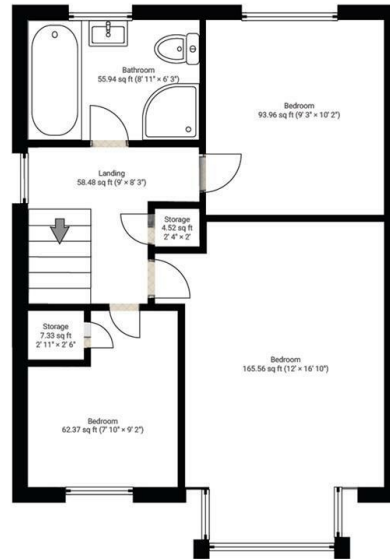
- 3 Bedroom detached home
- Enclosed South Facing Garden
- Patio Seating area
- Offers in the region of £295,000
- Modern bathroom with bathroom and separate shower
- Off street parking and garage
- Well presented and maintained throughout
- Popular location with good links to Chesterfield and Sheffield
- Ideal family home
- Modern kitchen with integrated appliances

Layton Drive, S41
 DETAILS
 Total area: 865.11 sq ft

▼ **Ground Floor** TOTAL AREA: 417.24 sq ft

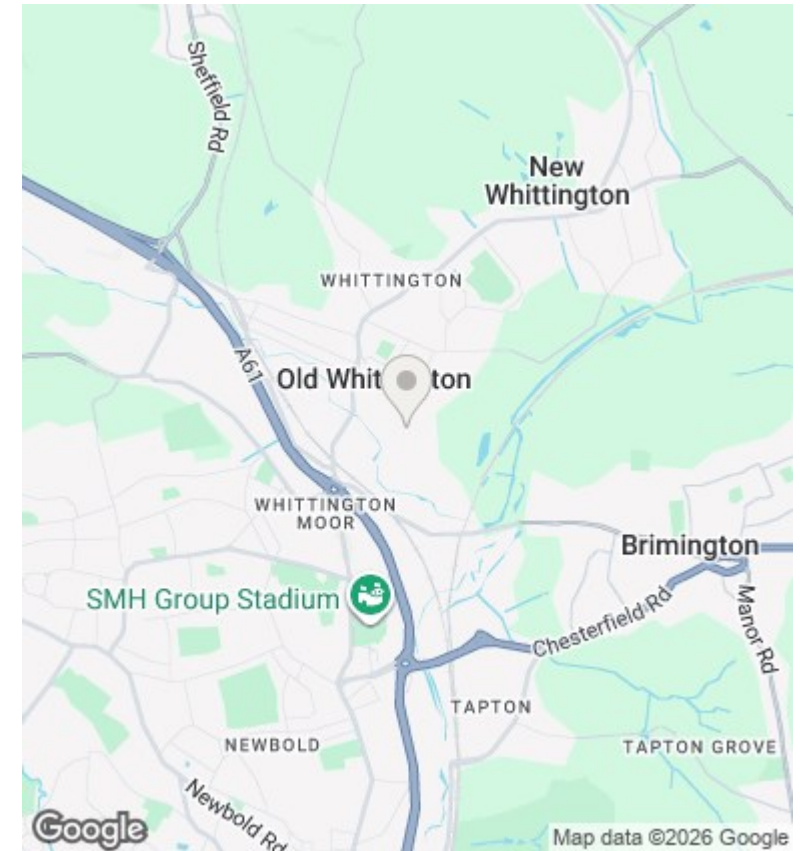


▼ **1st Floor** TOTAL AREA: 447.86 sq ft



Square Box Media
 info@squareboxmedia.com
 www.squareboxmedia.com

This floorplan is provided without any warranty. The actual size of dimensions may vary and this floorplan is intended for illustrative purposes only.



Directions

Viewings

Viewings by arrangement only. Call 01246 276 276 to make an appointment.

Council Tax Band

B

EPC Rating:

C

Energy Efficiency Rating		
	Current	Potential
Very energy efficient - lower running costs		
(92 plus) A		
(81-91) B		85
(69-80) C	69	
(55-68) D		
(39-54) E		
(21-38) F		
(1-20) G		
Not energy efficient - higher running costs		
England & Wales	EU Directive 2002/91/EC	