



Mundania Road, SE22

£1,325,000

A fully extended 1930's freehold house on the highly desirable Mundania Road. Boasting four bedrooms and 1645 square feet of living space as well as a south east facing garden. This home is being sold with no onward chain.

Mundania Road is the ideal location for enjoying Peckham Rye park and East Dulwich, Peckham Rye and Honor Oak stations are all within walking distance. Nearby you have some of the most sought after schools and Lordship Lane with a wealth of shops, bars and restaurants.

Features

- Fully Extended
- Open Plan Living
- Four Bedrooms
- Excellent Location
- Pristine Condition
- Front & Back Garden

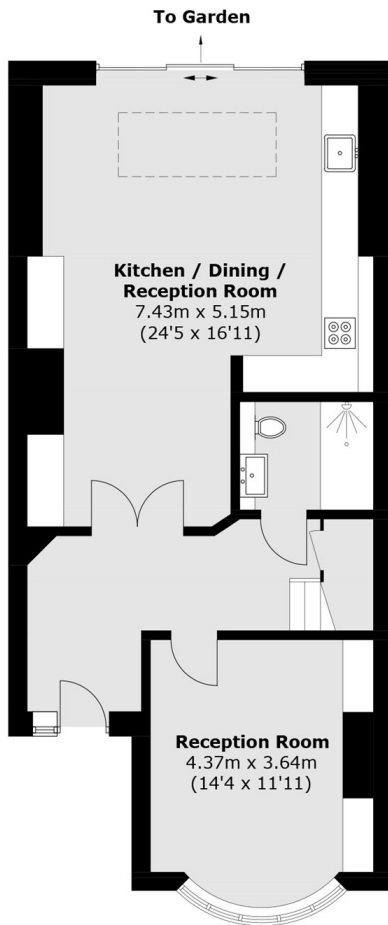


Mundania Road, SE22

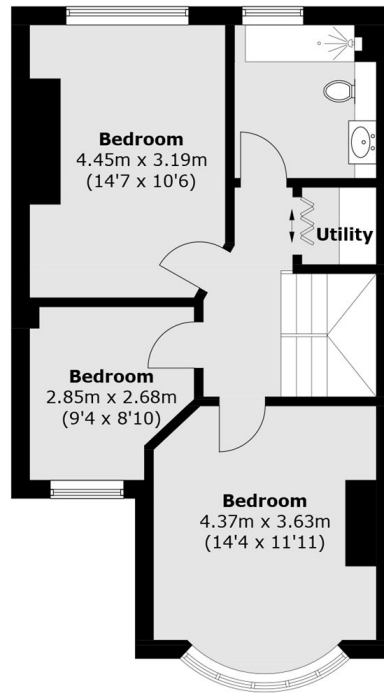
Set back from the street behind a charming front lawned garden, the property enjoys a sense of separation and kerb appeal. You are welcomed into a spacious entrance hallway, leading to a front reception room perfect as a cosy retreat. To the rear, the home has been thoughtfully extended to create an impressive open plan kitchen/dining/reception space with underfloor heating. This bright and sociable hub is ideal for modern family living, featuring a fully fitted contemporary kitchen, a skylight that floods the space with natural light, and large sliding doors opening directly onto the garden. Outside, the beautifully landscaped south east facing garden boasts a patio area ideal for al fresco dining and a well maintained lawn. On the first floor are two double bedrooms, along with a versatile third room that can serve as a child's bedroom or home office. These are complemented by a spacious family bathroom. A practical addition is the utility cupboard, complete with a heated wall for efficient clothes drying. The loft has been converted to create a superb fourth double bedroom suite. This impressive space benefits from an en suite bathroom and a Juliet balcony, offering delightful leafy views.



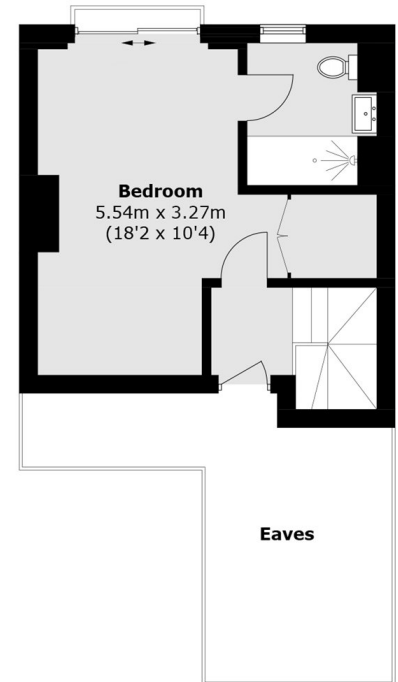
Mundania Road, London, SE22



Ground Floor



First Floor



Second Floor

Total area (approx.): 152.9 sq. m (1,645.7 sq. ft)
(Excluding Eaves)