



31 Draycott Avenue | | LONDON | SW3 3BS

£2,291 Per month

ESON2
REAL ESTATE

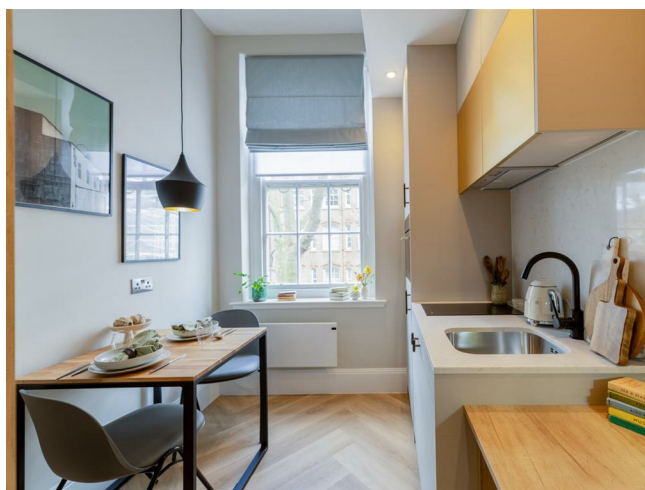
Key features

- Open-Plan Living
- High-End Kitchen
- Luxurious Bathroom
- Smart Design
- On-site Gym
- Workspace Facilities
- 24/7 Security

Description

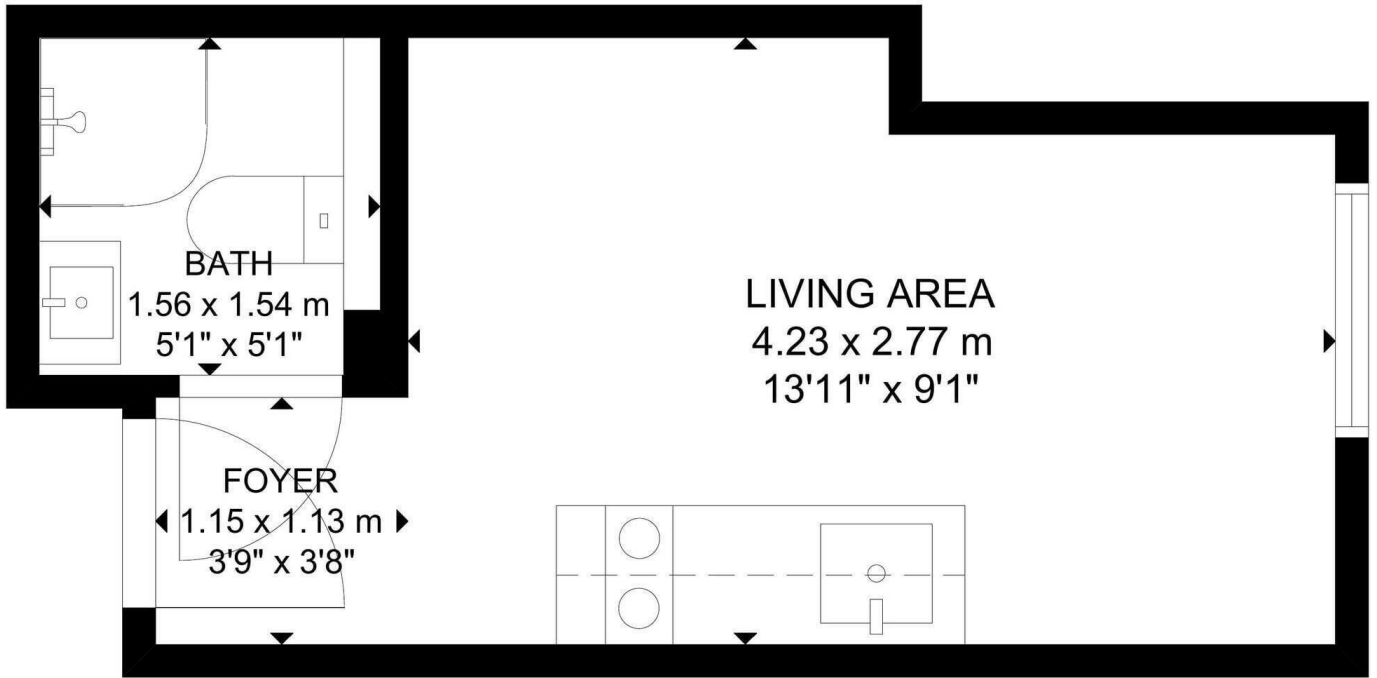
A newly refurbished studio apartment in Chelsea SW3 with a smart open-plan layout, premium integrated appliances, and a modern bathroom with a raised base shower. Residents benefit from 24-hour gym access, co-working space, secure entry, and CCTV. Ideally located near King's Road and Knightsbridge, close to shops, cafés, and transport links.

Directions



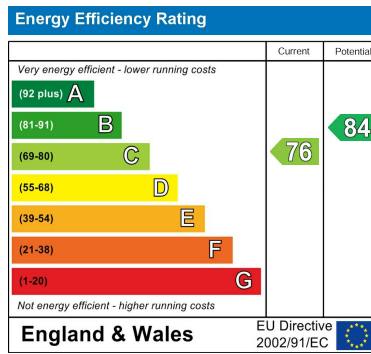
A stylish newly renovated studio apartment located in the prestigious Chelsea (SW3) area, designed to maximise space, comfort, and natural light.

Floor plans



SECOND FLOOR

GROSS INTERNAL AREA
 TOTAL: 15 m²/159 sq ft
 SECOND FLOOR: 15 m²/159 sq ft
 SIZE AND DIMENSIONS ARE APPROXIMATE, ACTUAL MAY VARY.



Council Tax Band EPC Rating C



301 Michelin House 81 Fulham road
 London
 Greater London
 SW3 6RD
 07920 257649
 fayeel@eson2.co.uk
 www.eson2.co.uk