



Malvern Road, London

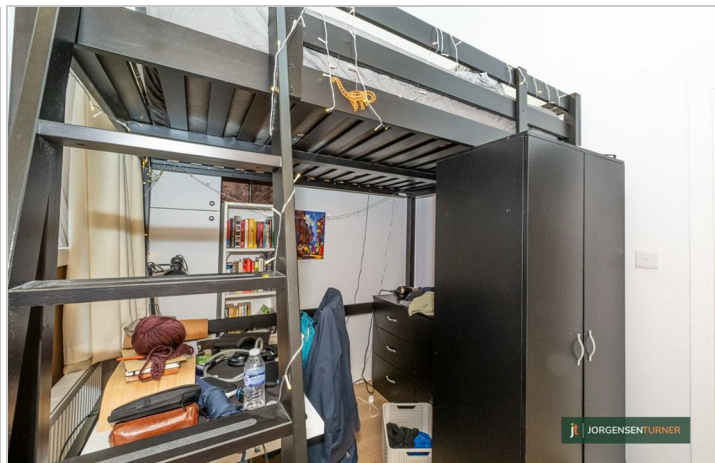
£2,150 Per Month





# Malvern Road, London

£2,150 Per Month



## Summary Description

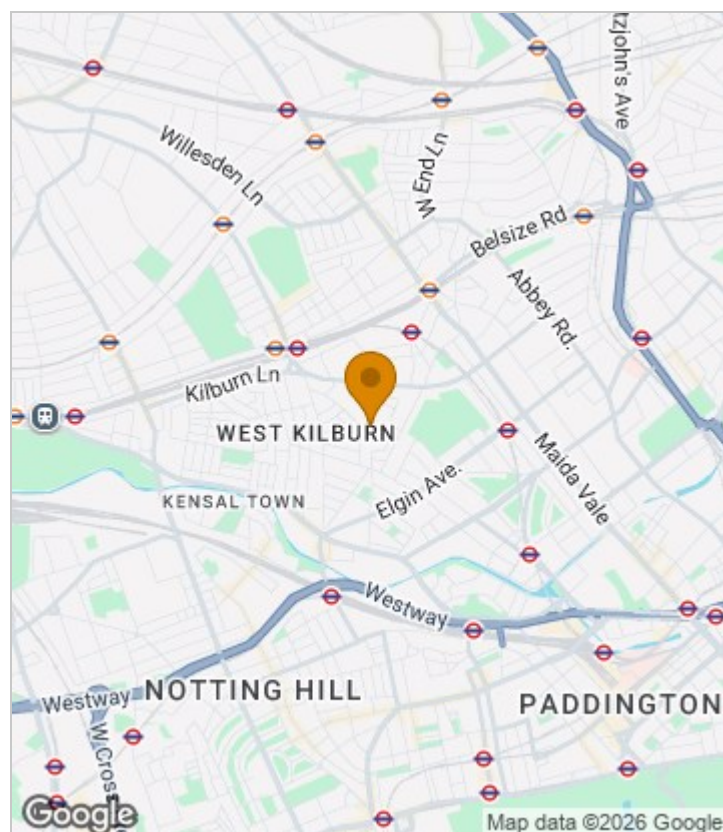
This lovely ground floor, two-bedroom property is available from 9th March. It features high ceilings an open-plan lounge a modern finish wooden flooring throughout double-glazed windows, and a contemporary bathroom.

Additional benefits include a private outdoor patio and an excellent location just a 10-minute walk to Queen's Park and 15 minutes to Maida Vale, with easy access to a wide range of shops, bars, and restaurants.

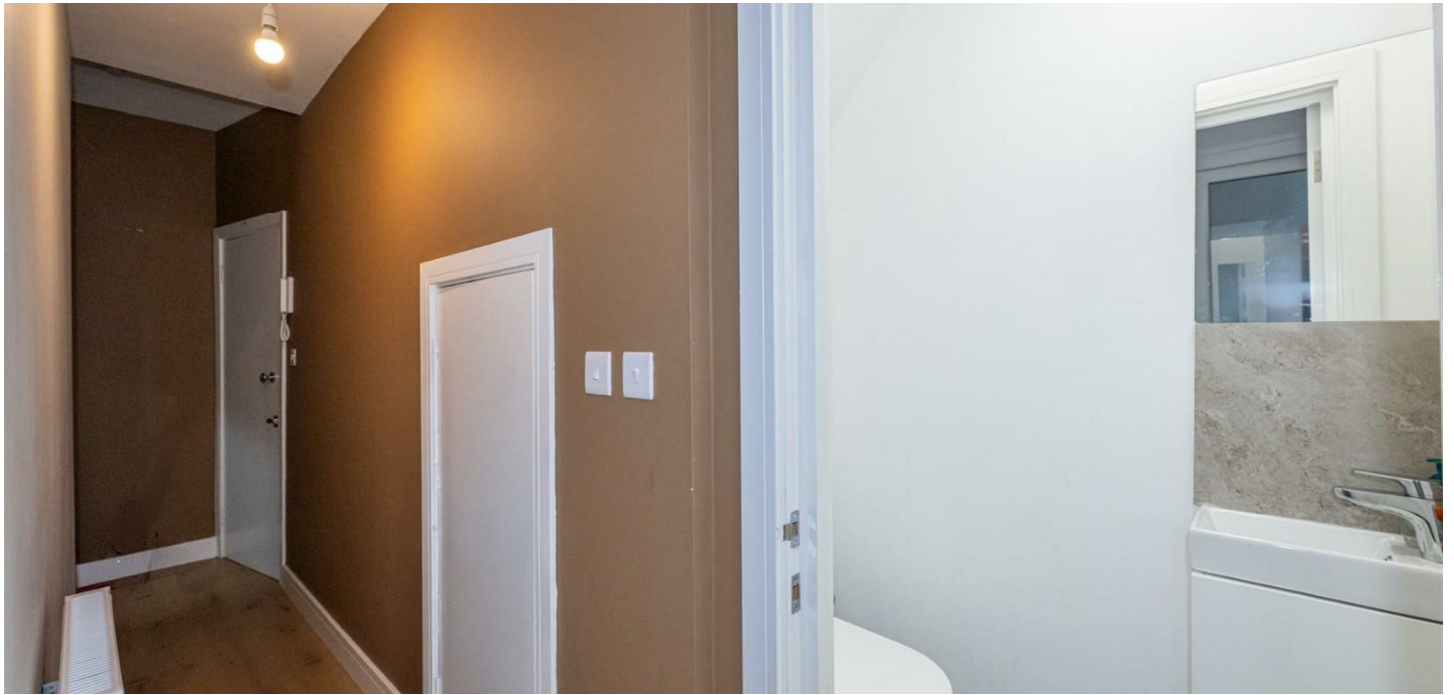
The property comes fully furnished.

Call Jorgensen Turner Estate Agents to arrange a viewing. One week`s holding deposit will be required, 5 weeks damage deposit require, EPC rating D, council tax band D

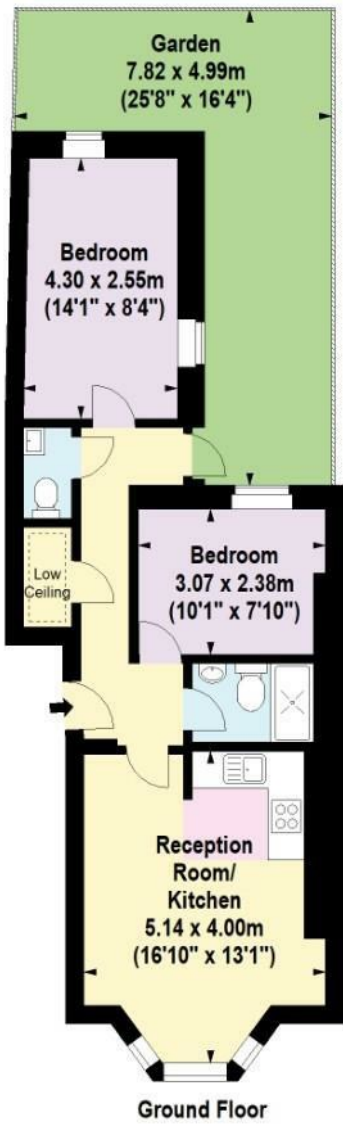
## Area Map







Floor Plan



For Identification Purposes Only. Not To Scale. © www.totalvista.uk 2026

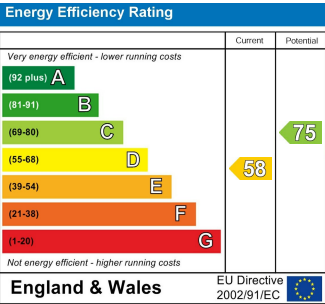


Malvern Road, NW6

Approx. Gross Internal Area  
51.19 Sq M - 551 Sq Ft



Energy Efficiency Graph



Viewing

Please contact our Lettings QP Office on 0207 604 4040 if you wish to arrange a viewing appointment for this property or require further information.

- Two bedroom flat
- Open plan
- Modern
- Outdoor area

For further information contact:  
Lettings QP, 2a Brondesbury Road, London, NW6 6AS  
Tel: 0207 604 4040 Email: [info@jorgensenturner.com](mailto:info@jorgensenturner.com) <https://www.jorgensenturner.com/>

Disclaimer

These particulars, whilst believed to be accurate are set out as a general outline only for guidance and do not constitute any part of an offer or contract. Intending purchasers should not rely on them as statements of representation of fact, but must satisfy themselves by inspection or otherwise as to their accuracy. No person in this firms employment has the authority to make or give any representation or warranty in respect of the property.

