



## Price

£1,400 PCM

Fees Apply

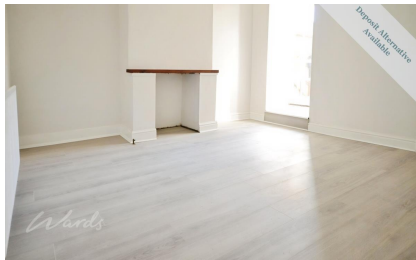


Available 29/08/26

College Avenue  
Gillingham ME7

*Wards*

Helping you move forwards



## Main Features

Three Bedroom Terrace

Modern Living

Commuter Heaven and Walking Distance To Medway Maritime

Rear Garden

Permit Parking

Unfurnished

## Accommodation

Lounge 3.41 x 3.89

Dining Room 3.58 x 4.31

Kitchen 2.73 x 3.51

Bathroom 2.73 x 3.51

Bedroom 1 4.48 x 3.31

Bedroom 2 2.68 x 3.67

Bedroom 3 3.21 x 2.74



Deposit required is £1,615.38  
Medway - Council Tax Band Tax Band C

Renting a property is a big commitment and we recommend that you visit the local authority website and these websites which offer helpful information and advice about letting

[www.gov.uk/government/publications/how-to-rent](http://www.gov.uk/government/publications/how-to-rent)

[www.gov.uk/private-renting](http://www.gov.uk/private-renting)

[www.wardsofkent.co.uk/renting/tenancy-fees-individuals/](http://www.wardsofkent.co.uk/renting/tenancy-fees-individuals/)

[www.gov.uk/green-deal-energy-saving-measures](http://www.gov.uk/green-deal-energy-saving-measures)

Call Medway 01634 714848 ■ [wardsofkent.co.uk](http://wardsofkent.co.uk)

IMPORTANT INFORMATION: Please contact our Lettings Team who will confirm the total costs involved in renting this property. For clarification, we wish to inform the prospective tenant that we have prepared these details as a general guide. The agent has not carried out a detailed survey nor tested the services, appliances, or specific fittings (unless otherwise stated), and no warranty can be given as to their condition. All room measurements are taken at floor level. We strongly recommend that all the information which we provide about the property is verified by yourself and your advisers. The contents of this publication are © Wards, 2015. Wards is a trading name of Arun Estates Limited Registered in England No. 2597969



### Ground Floor

Approx. 55.1 sq. metres (593.3 sq. feet)



### First Floor

Approx. 43.1 sq. metres (464.0 sq. feet)



Total area: approx. 98.2 sq. metres (1057.2 sq. feet)