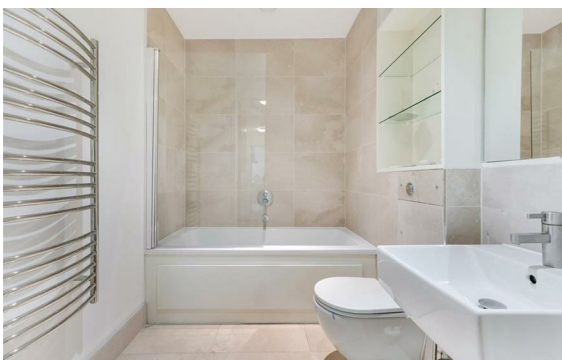
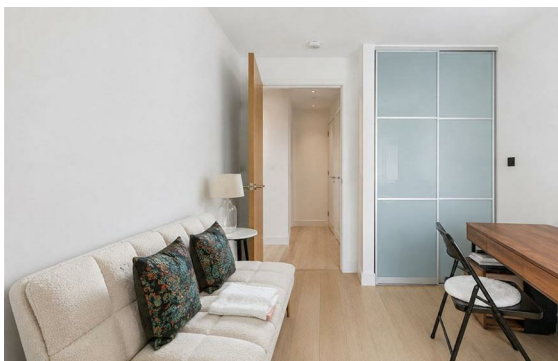
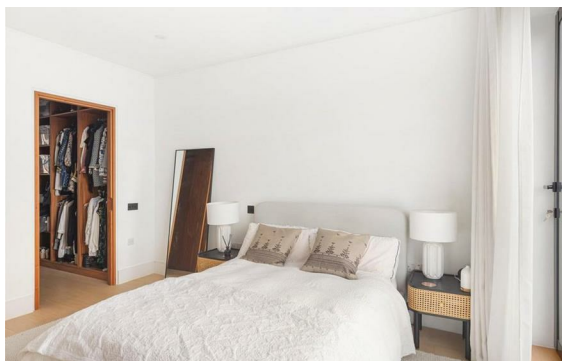


**Strand, Covent Garden, London, WC2R**

Rent £1,295 PCM

2 Bed | 2 Bath | 1 Reception

*Please call us on 020 7724 2233 or email us [info@newingtonstates.com](mailto:info@newingtonstates.com) to book a viewing.*



60 Upper Montagu Street

London

W1H 1SN

020 7724 2233

[info@newingtonstates.com](mailto:info@newingtonstates.com)

A beautifully presented two-bedroom duplex apartment offering spacious living accommodation and high-quality finishes in a prestigious central London location. The property features a bright reception room, a fitted kitchen, and two well-proportioned double bedrooms with fitted wardrobes. The principal bedroom benefits from an en-suite bathroom, complemented by a second luxury bathroom. Excellent storage and stylish furnishings complete the accommodation.

Ideally located on the Strand, close to Temple Station and Covent Garden Station, with easy access to the West End, theatres, restaurants, cafés, and a wide range of local amenities.

EPC Rating: B

## Energy Efficiency Rating: B

Agents Note: Whilst every care has been taken to prepare these particulars, they are for guidance purposes only. All measurements are approximate and are for general guidance purposes only and whilst every care has been taken to ensure their accuracy, they should not be relied upon and potential buyers/tenants are advised to recheck the measurements.

<http://www.newingtonstates.com>