

# BARTON FLEMING

INDEPENDENT ESTATE AGENTS



**4 Stable Road, Bicester,  
Oxfordshire. OX26 3HX**

# BARTON FLEMING

INDEPENDENT ESTATE AGENTS

Web: [www.bartonfleming.co.uk](http://www.bartonfleming.co.uk)  
E-mail: [info@bartonfleming.co.uk](mailto:info@bartonfleming.co.uk)  
62 North Street, Bicester. OX26 6NF

Tel: Bicester (01869)

## 249922

**4 Stable Road, Bicester, Oxon. OX26 3HX**



**Three Bedroom Detached Home with a 'B' Energy Rating and Solar Panels which are Owned Outright & Replaced Boiler  
All within Walking Distance of Town & Bicester North.**

**FREEHOLD**

**£ 350,000**

- ❖ Entrance Hall, Rear Hallway
- ❖ Cloakroom
- ❖ Kitchen
- ❖ Lounge-Diner
- ❖ Landing, Three Bedrooms, Bathroom
- ❖ PVC Double Glazing, Gas to Radiator Heating
- ❖ Replaced 'Worcester' Boiler
- ❖ Garage & Parking
- ❖ Walking Distance of Bicester North & Town
- ❖ Solar Panels Owned Outright – Lower Bills and Generating an Income about £400 p.a.
- ❖ 5-minute walk to Bure Park Nature Reserve and Play Areas
- ❖ 5-minute walk to local shops, pub and 10-minute walk to town centre

VIEWING  
APPOINTMENT:

DAY:

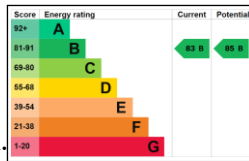
TIME:

### **Key Facts for Buyers:**

**EPC:** On Order

**Council Tax:** Band C

Approx. £2,190 per annum.



### **Ground Floor:**

Outside PIR courtesy light, part-glazed security front door to:

#### **ENTRANCE HALL: 6'9 x 3'0**

Side aspect PVC window, laminate flooring, cupboard enclosing RCD/MCB electric consumer unit, glazed door to:

#### **LOUNGE DINER: 17'11 narrowing to 15'10 x 16'2**

Front aspect PVC window, coving, laminate flooring, two radiators, staircase, "Virgin", satellite and TV points, telephone.

#### **REAR HALL: 9'7 x 3'0**

Rear aspect half glazed door to garden, built-in cupboard enclosing "Worcester" boiler, radiator, laminate flooring.

#### **CLOAKROOM: 2'7 x 4'8**

Rear aspect PVC window, radiator, close coupled WC, wash hand basin.

#### **KITCHEN: 9'7 x 7'7 widening to 9'7**

Rear aspect PVC window, laminate flooring. Range of base and eye level units, roll edge laminate worksurfaces, tiled surrounds, 600mm space for washer/dryer, space for dishwasher, 1½ bowl stainless steel sink, 600mm undersink base unit, 900mm x 900mm corner base unit with two 300mm doors and carousel, space for 600mm slot-in cooker, 100mm tray space, 1000mm corner base unit with 500mm door and drawer, 600mm base unit with drawer 300mm base unit with drawer, space for 600mm wide fridge freezer.

### **First Floor:**

#### **LANDING:**

Access to loft space (*drop down ladder, part boarded around hatch, hard wired light*), coving, airing cupboard.

#### **BATHROOM: 6'9 x 5'6**

Rear aspect PVC window, radiator, sheet vinyl flooring, fully tiled walls, panel enclosed bath thermostatic shower over, sliding head support, screen, pedestal wash hand basin, close coupled WC.

#### **BEDROOM ONE: 12'6 x 9'8 widening to 10'3 plus wardrobe**

Front aspect window, coving, radiator, two built-in wall-to-wall wardrobes, laminate flooring.

#### **BEDROOM TWO: 11'0 x 9'1**

Rear aspect window, coving, radiator, built-in wardrobe, laminate flooring.

#### **BEDROOM THREE: 8'8 widening to 9'7 x 6'3 plus bulkhead cupboard**

Front aspect window, coving, radiator, built-in bulkhead overstairs cupboard, laminate flooring.

### **Outside:**

**FRONT GARDEN:** refer to photograph

**REAR GARDEN:** refer to photographs  
Gate.

#### **GARAGE:**

Up and over door, light and power.

# BARTON FLEMING

INDEPENDENT ESTATE AGENTS

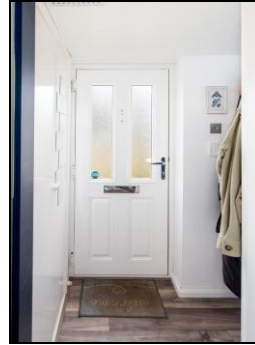
Web: [www.bartonfleming.co.uk](http://www.bartonfleming.co.uk)  
E-mail: [info@bartonfleming.co.uk](mailto:info@bartonfleming.co.uk)  
62 North Street, Bicester. OX26 6NF

Tel: Bicester (01869)

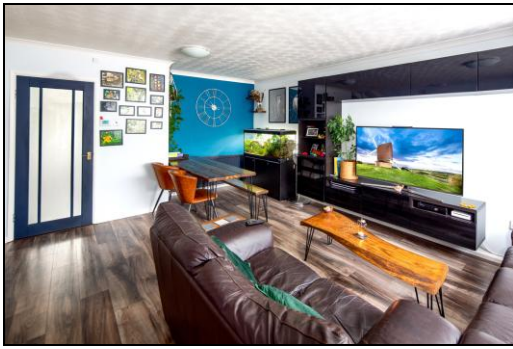
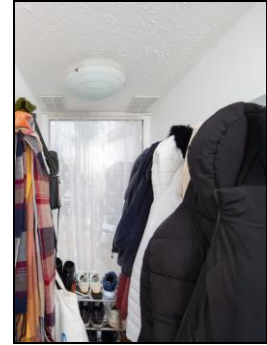
## 249922



Front (Right-hand house) & Garage (Blue door)



Entrance Hall



Lounge-Diner



Lounge-Diner



Lounge-Diner



Rear Hallway & Cloakroom



Kitchen



Kitchen

# BARTON FLEMING

INDEPENDENT ESTATE AGENTS

Web: [www.bartonfleming.co.uk](http://www.bartonfleming.co.uk)  
E-mail: [info@bartonfleming.co.uk](mailto:info@bartonfleming.co.uk)  
62 North Street, Bicester. OX26 6NF

Tel: Bicester (01869)

## 249922



Bathroom



Landing



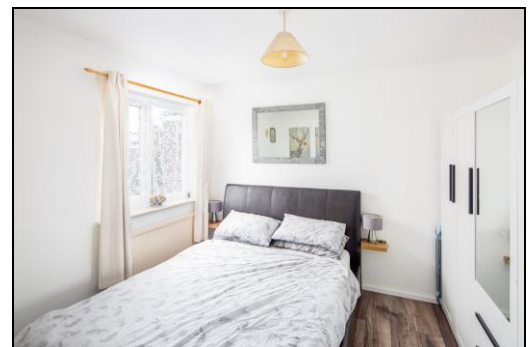
Bedroom One



Bedroom One



Bedroom One



Bedroom Two

# BARTON FLEMING

INDEPENDENT ESTATE AGENTS

Web: [www.bartonfleming.co.uk](http://www.bartonfleming.co.uk)  
E-mail: [info@bartonfleming.co.uk](mailto:info@bartonfleming.co.uk)  
62 North Street, Bicester. OX26 6NF

Tel: Bicester (01869)

## 249922



Bedroom Three



Rear Garden

**Space for Notes:**

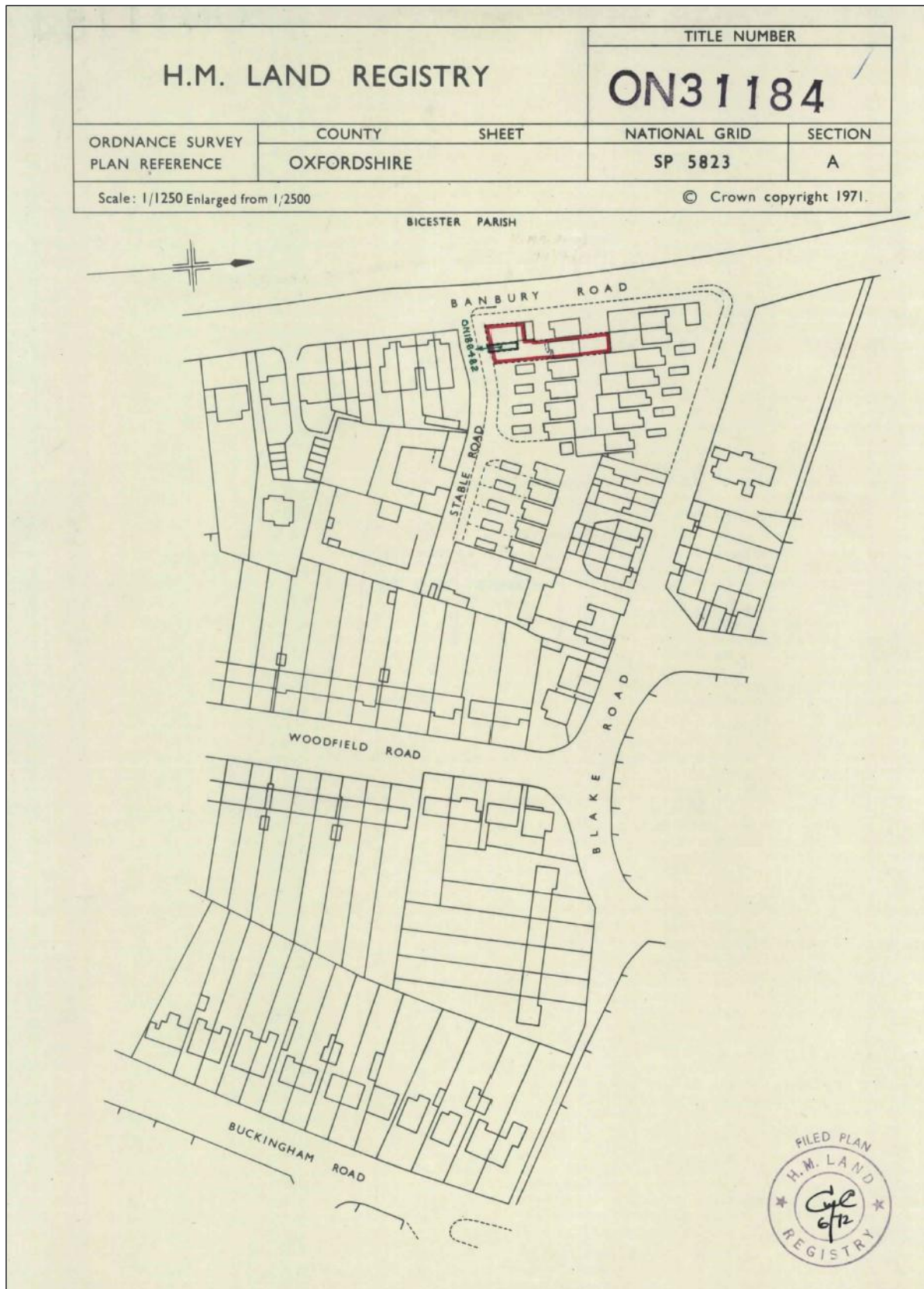
# BARTON FLEMING

INDEPENDENT ESTATE AGENTS

Web: [www.bartonfleming.co.uk](http://www.bartonfleming.co.uk)  
E-mail: [info@bartonfleming.co.uk](mailto:info@bartonfleming.co.uk)  
62 North Street, Bicester. OX26 6NF

Tel: Bicester (01869)

## 249922



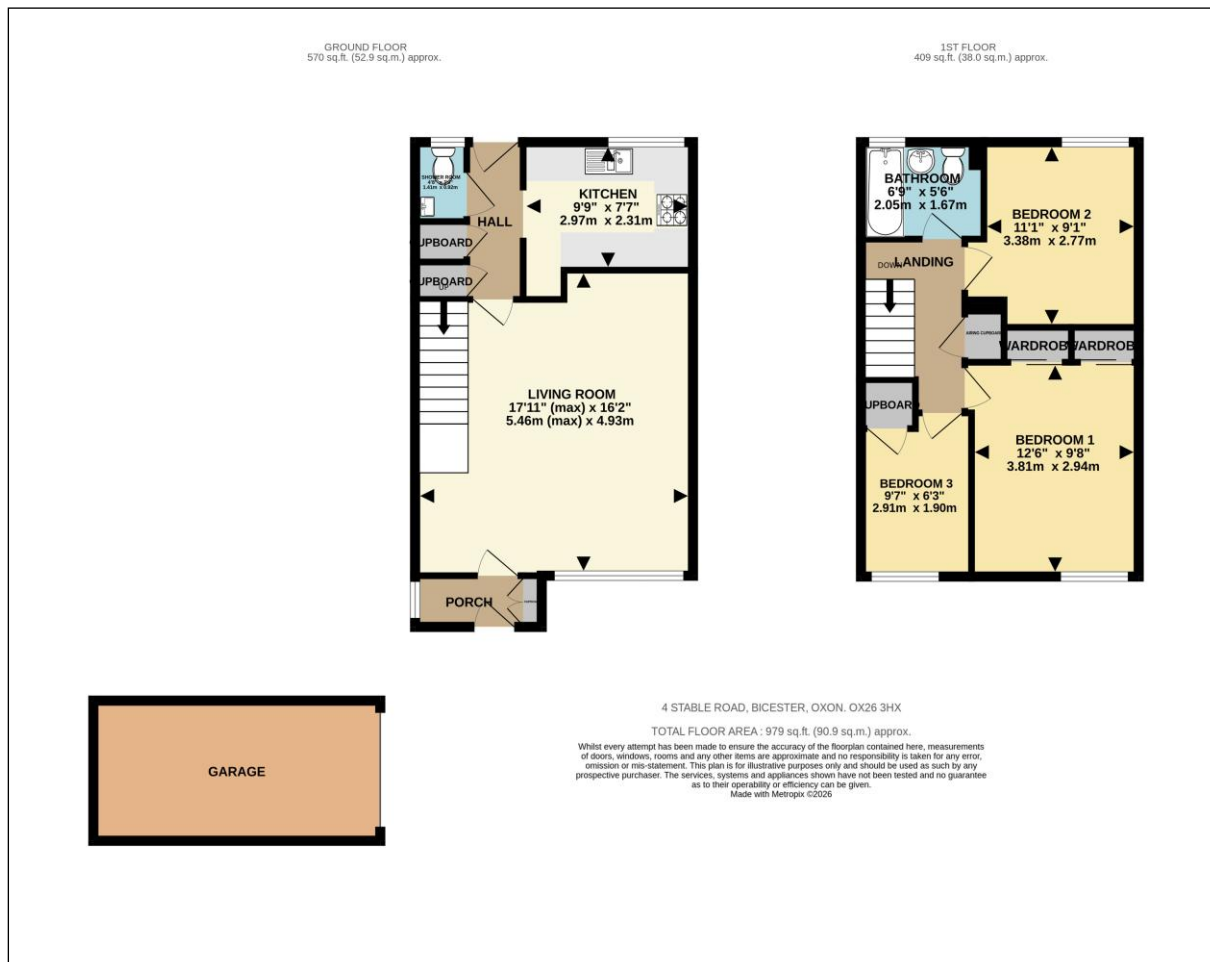
# BARTON FLEMING

INDEPENDENT ESTATE AGENTS

Web: [www.bartonfleming.co.uk](http://www.bartonfleming.co.uk)  
E-mail: [info@bartonfleming.co.uk](mailto:info@bartonfleming.co.uk)  
62 North Street, Bicester. OX26 6NF

Tel: Bicester (01869)

249922



These particulars do not constitute any part of an offer or a contract. Whilst every care has been taken to ensure accuracy, no responsibility for errors or mis-description is accepted. Any intending purchaser must satisfy himself by inspection or otherwise as to the correctness of each of the statements in these particulars. The vendor does not make or give and neither Barton Fleming nor any person in their employment, has authority to make or give any representation or warranty whatsoever in relation to this property. Land Registry Plans are provided as guidance only and while LRP documents are generated from what is registered at the point at when the plans are downloaded for use in these particulars they are not guaranteed to represent the property title at any given moment. Buyers should satisfy themselves through their solicitor as to the accuracy of the land registration at any given moment.