



22 St. Johns Drive, Windsor, Berkshire, SL4 3RA
£499,500

 **HORLER**

22 St. Johns Drive, Windsor, Berkshire, SL4 3RA

This charming semi-detached bungalow is a rare find, combining a peaceful setting with practical living spaces. This spacious property is perfect for individuals or couples looking for a peaceful living environment. It presents an excellent opportunity for those looking to settle in a desirable area. Don't miss your chance to make this lovely property your new home.

Call today on 01753 621234 to arrange a viewing



Property Summary

Located in a tranquil cul-de-sac off Hatch Lane in Windsor, this charming semi-detached bungalow offers a delightful retreat for those seeking comfort and convenience. With one spacious bedroom, this property is perfect for individuals or couples looking for a peaceful living environment.

Upon entering, you are welcomed by a large living room that provides an inviting space for relaxation and entertainment. Adjacent to this, a separate dining room offers an ideal setting for meals with family and friends. The well-appointed kitchen features both eye and base level units, ensuring ample storage and functionality for your culinary needs.

The family bathroom is thoughtfully designed, providing a comfortable space for your daily routines. Outside, the property boasts a secluded rear garden, complete with a detached garage, garden shed, and a lovely patio area, perfect for enjoying the outdoors or hosting gatherings.

Parking is a breeze with space for up to four vehicles on the driveway, complemented by a side access gate for added convenience. The location is superb, with local amenities and transport links just a stone's throw away, making it easy to enjoy all that Windsor has to offer.

This bungalow is a rare find, combining a peaceful setting with practical living spaces. It presents an excellent opportunity for those looking to settle in a desirable area. Don't miss your chance to make this lovely property your new home.

General Information

Council Tax Band 'D'

Legal Note

Although these particulars are thought to be materially correct their accuracy cannot be guaranteed and they do not form part of any contract



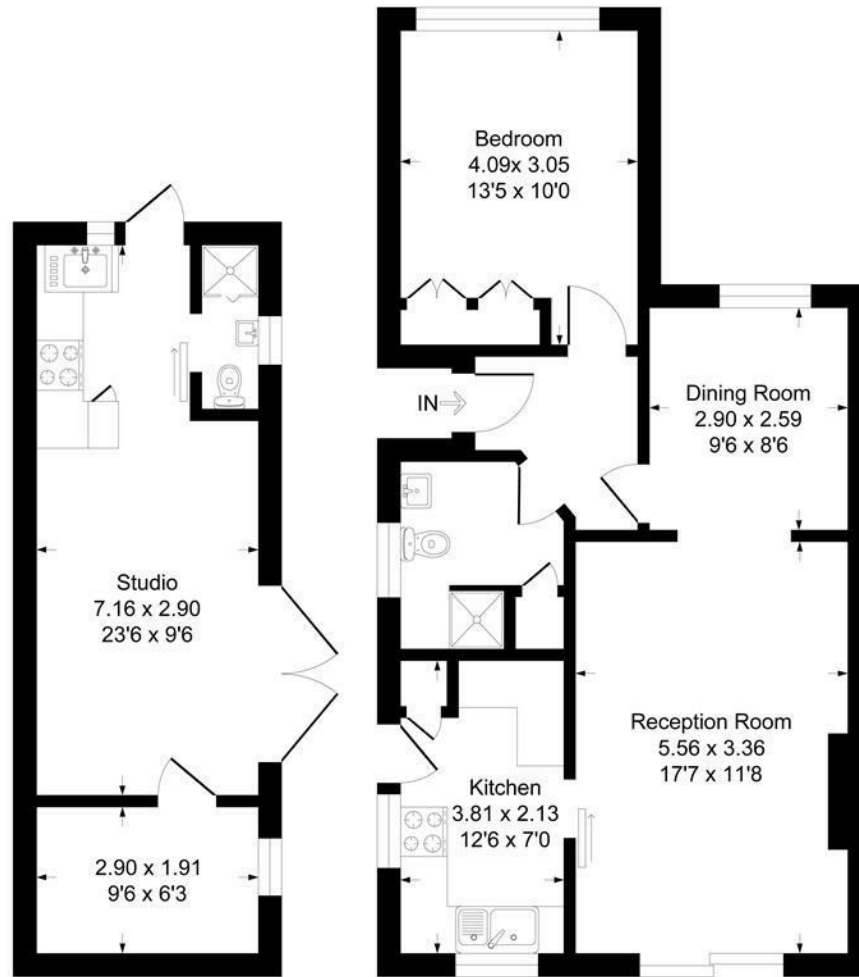


St John's Drive SL4

Approximate Gross Internal Floor Area = 58.8 sq m / 633 sq ft

Outbuilding Area = 26.6 sq m / 287 sq ft

Total Area = 85.4 sq m / 920 sq ft



Outbuilding

Ground Floor

Illustration for identification purposes only, measurements are approximate, not to scale.
Produced By Esjay Property Marketing