

Unit 6 13 Burton Place, Manchester, Lancashire, M15 4PT

Tel: 0161 637 8336

Email: contactus@ascendproperties.com

www.ascendproperties.com

Ascend

Built on higher standards



Burlington Street, Manchester

£1,195 PCM

Step inside this spacious two-bedroom apartment, which truly must be seen to be appreciated. Offering a warm and welcoming atmosphere throughout, this charming home combines comfort, character and practicality in equal measure.

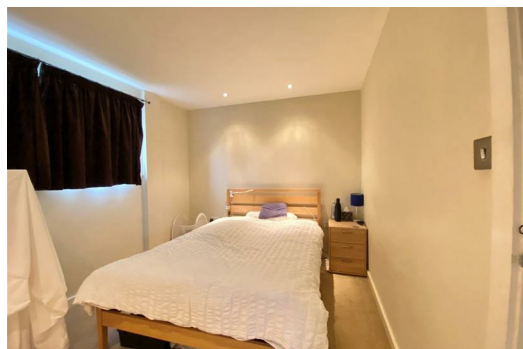
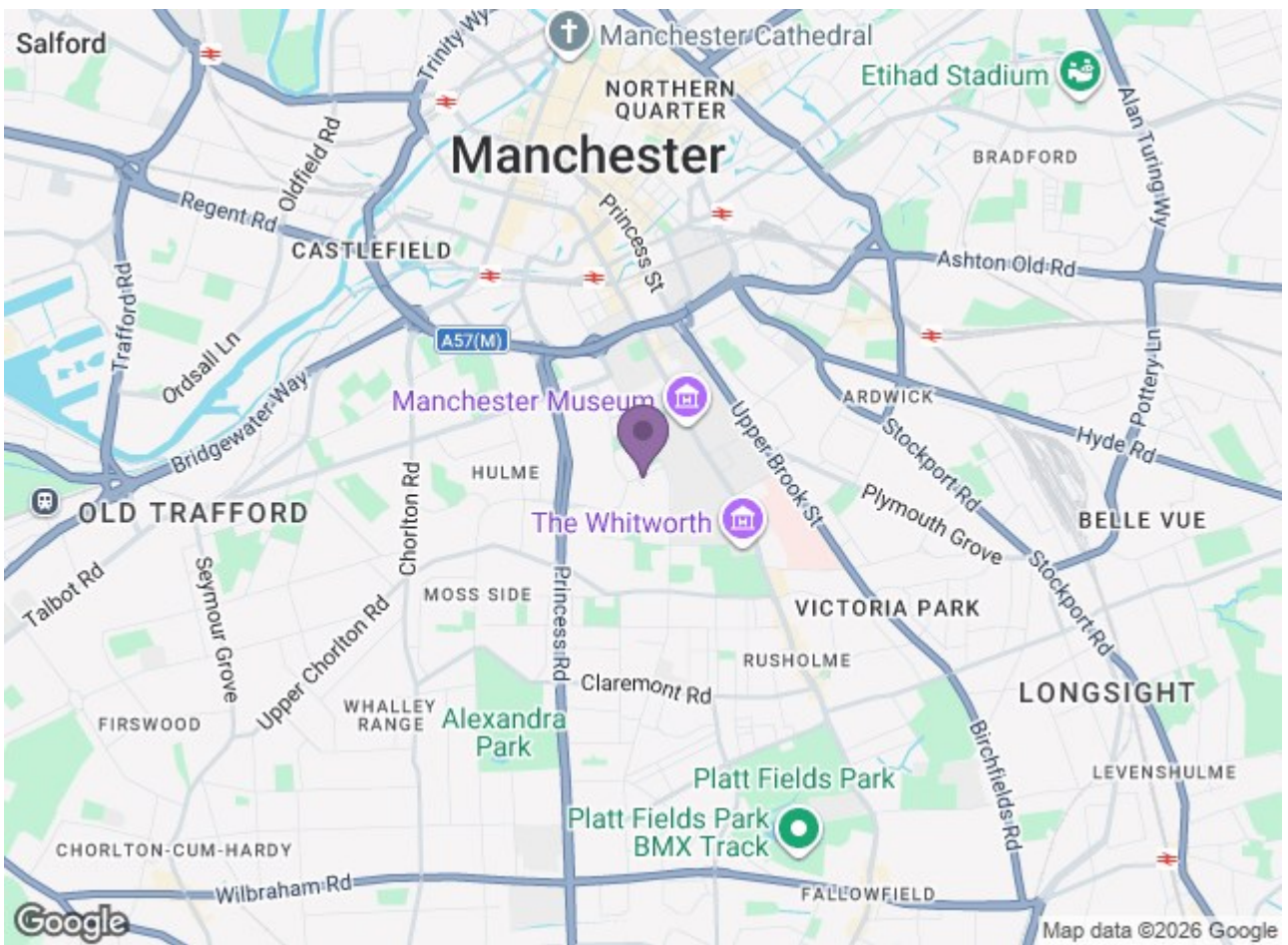
Fully furnished and ready to move into, the property boasts a bright and spacious open-plan living and kitchen area, creating the perfect space for relaxing, dining and entertaining. Both bedrooms are generously sized, providing plenty of room for furnishings and storage, while the modern bathroom is well presented and finished to a high standard.

With its homely feel, neutral décor and excellent layout, this apartment offers a comfortable and inviting place to call home, full of charm and character.

Located in the highly sought-after M15 postcode, the property enjoys an excellent position just moments from Manchester City Centre. Deansgate, First Street and Oxford Road are all within easy reach, offering an abundance of restaurants, bars, cafés, shops and entertainment venues. Manchester's universities, major employment hubs and excellent transport links are also nearby, making this an ideal location for both professionals and students alike.

Properties of this size and standard in such a convenient location are always in high demand, so early viewing is highly recommended. Contact our team today to arrange your viewing.





Energy Efficiency Rating		Environmental Impact (CO ₂) Rating	
Band	Score	Band	Score
A	92-100	A	1-10
B	81-91	B	11-20
C	69-80	C	21-30
D	55-68	D	31-40
E	39-54	E	41-50
F	13-38	F	51-60
G	1-12	G	61-70

England & Wales