



1 Bedroom | 1 Bathroom | 1 Reception Room

The Pines | Purley | CR8 2DZ

£220,000

LOFT

The Pines |
Purley | CR8 2DZ
£220,000

- Well-presented lower-ground floor apartment
- Recently renovated, a blank canvas ready to move into
- Direct access to communal gardens with a patio, perfect for a summers evening
- Open plan kitchen/reception room, offering an abundance of space for lounging and dining
- Fitted kitchen with space for all appliances
- Double bedroom and large hallway with storage
- Elegantly designed bathroom
- Ideal location, within walking distance of Purley train station and town centre and bus links at the bottom of the road

Lower Ground Floor

Hallway

Reception

Room/Kitchen

19'8 x 14'4 (5.99m x 4.37m)

Bedroom

14'8 x 9'2 (4.47m x 2.79m)

Bathroom

Outside

Direct Access to

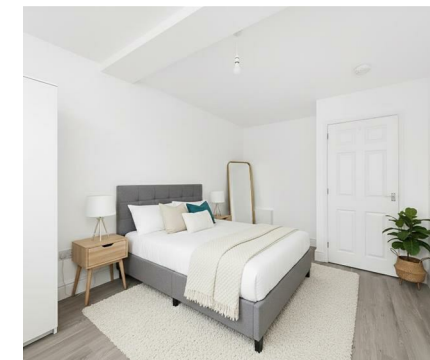
Communal Garden

Allocated Parking



The Pines Purley, CR8

Approximate Gross Internal Area
43.3 sq m / 466 sq ft



Basement Flat

This plan is for layout guidance only. Not drawn to scale unless stated. Windows and door openings are approximate. Whilst every care is taken in the preparation of this plan, please check all dimensions, shapes and compass bearings before making any decisions reliant upon them. (ID1277134)



EPC Rating: C

23a High Street
Purley
Surrey
CR8 2AF
0208 660 8070
hello@loft-estates.co.uk