



Windmill Road, TW12

£475,000

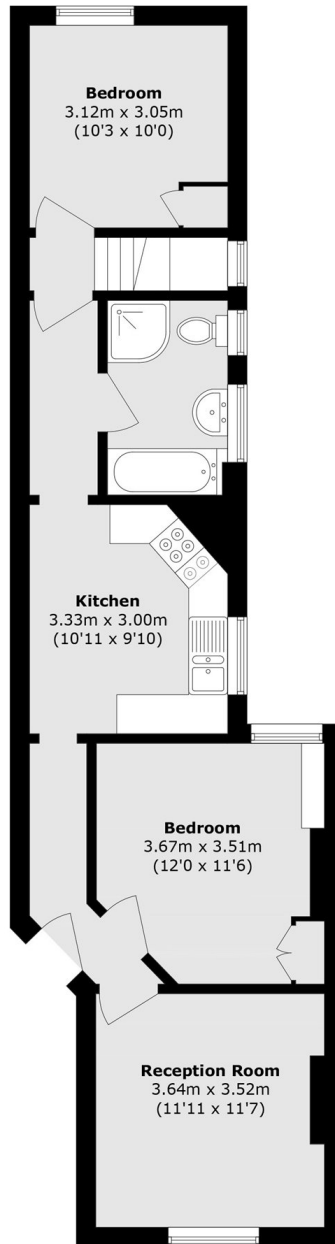
A two bedroom first floor flat with private garden, set in a period terrace. Bright reception room, separate kitchen and two double bedrooms - well kept but with scope to modernise, this is ideal as a first time buy or investment.

Windmill Road is just off Hampton Hill High street. Local shops and cafes, Bushy Park and many popular nearby schools are all within walking distance.

Features

- Victorian
- First Floor Flat
- Private Garden
- Two Bedrooms
- Recently Extended Lease
- No Onward Chain

Windmill Road, Hampton Hill, TW12



Ground Floor

First Floor

Total area (approx.): 64.4 sq. m (693.2 sq. ft)