



## East Ferry Road, E14

### £425,000

This is a stunning 1 bedroom, 1 bathroom apartment with an open plan living area in Heritage Tower in Canary Wharf in pristine condition. It is on the ninth floor of a striking residential tower.

The property features a fitted kitchen with under light cabinets, integrated Siemens appliances, oak timber flooring in the open plan lounge-diner which has underfloor heating. The attractive open plan is built to the highest specification and has ample storage throughout. It also has ceiling to floor windows through which natural light floods the living areas. This leads on to a private double width balcony with seating area.

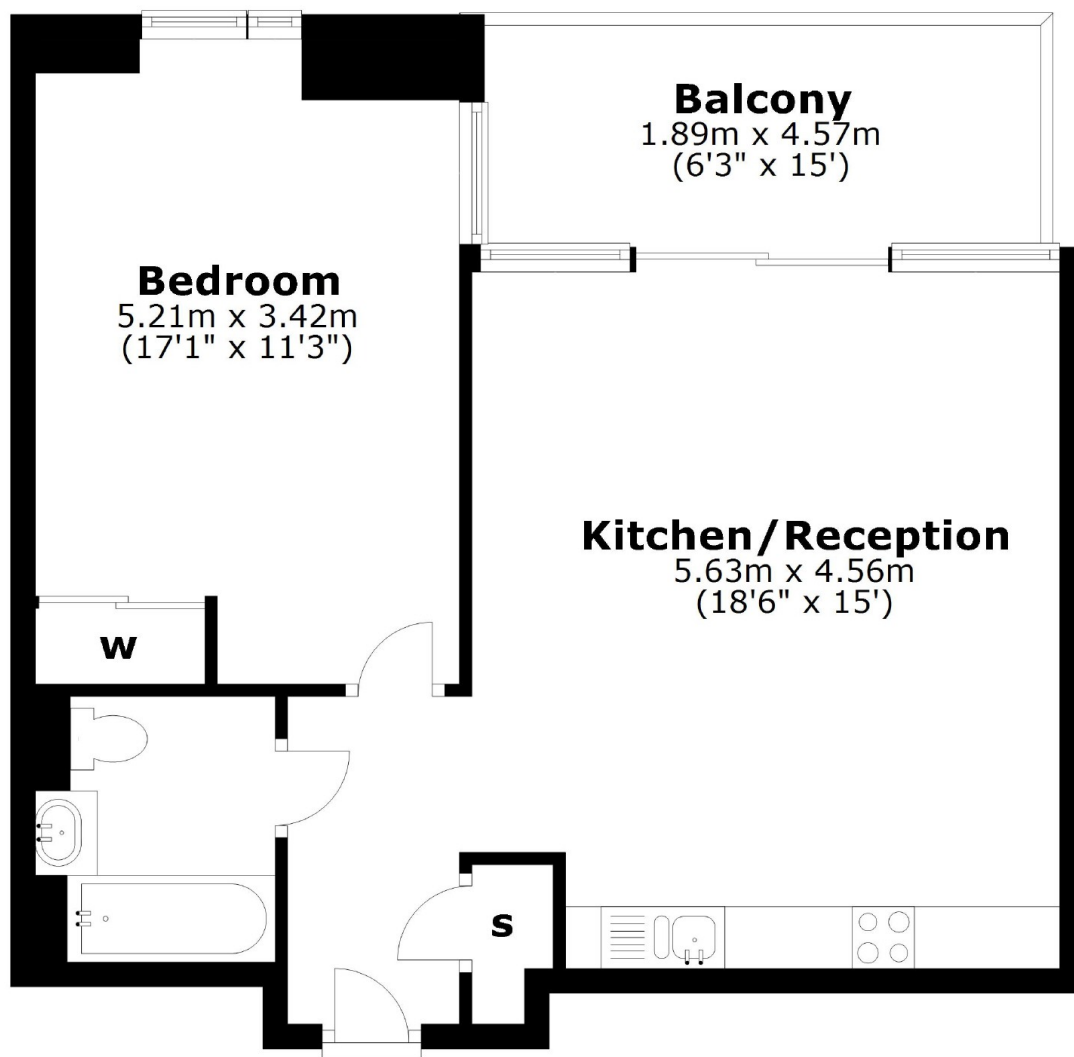
It is in prime location being 2 min walk to Crossharbour DLR station which provides access to Canary Wharf Station and Canary Wharf Shopping Centre in 4 minutes. Canary Wharf Station is connected to the Jubilee Line and Elizabeth Line service for convenient connection and easy access to Central London.

### Features

- Ninth Floor
- Private Balcony
- Concierge Service
- Residents Gym
- No Onward Chain
- 580 Square Feet

East Ferry Road,  
London, E14

## Ninth Floor



Total area: approx. 53.7 sq. metres (578.5 sq. feet)