



HARDINGS

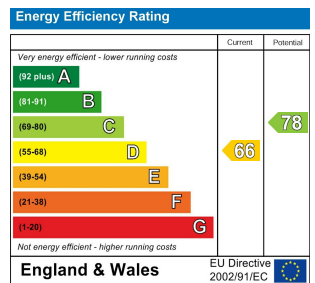


102 Osborne Road  
Guide Price £225,000



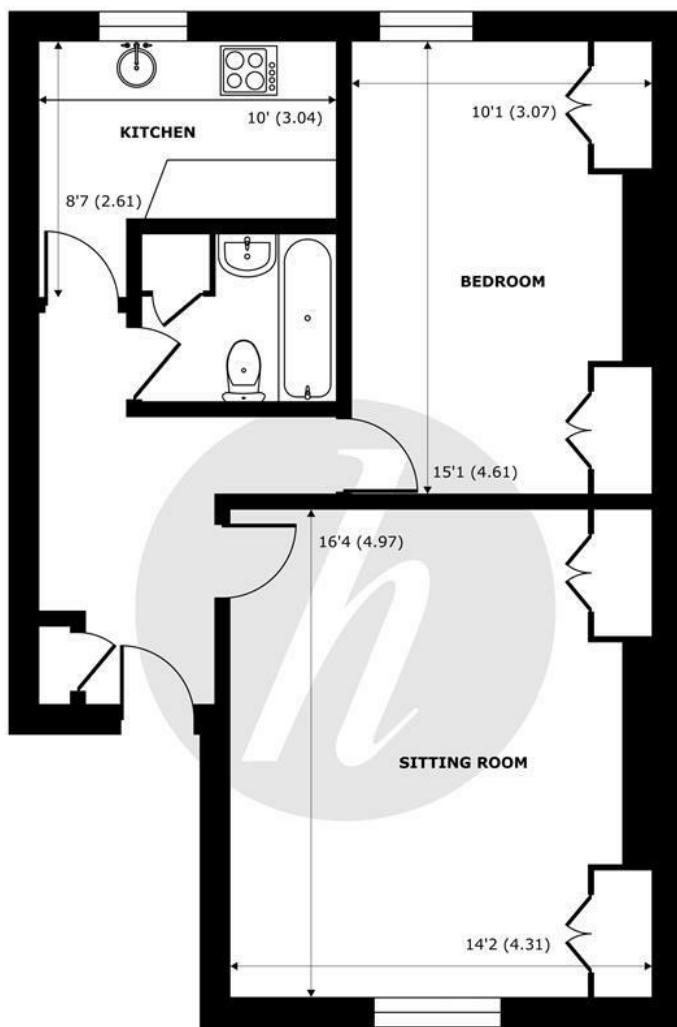


A top-floor one-bedroom apartment ideally located in the heart of Windsor town centre. The property features a bright and spacious living area, a fitted kitchen with integrated appliances, and a generously sized double bedroom. Positioned on the top floor, the property benefits from added privacy and elevated views across the town. Just moments from Windsor's vibrant shops, restaurants, and transport links, this apartment is ideal for professionals, first-time buyers, or investors seeking a prime central location.



## Features

- One double bedroom
- Moments from Windsor town centre
- Period Property
- Very Spacious dining/Living room
- End of Chain
- Investment opportunity



**SECOND FLOOR**  
abt 700 SQFT (65 SQMT)

## Osborne Road, Windsor, SL4

Approximate Internal Area = 593 sq ft / 55 sq m  
Approximate External Area = 700 sq ft / 65 sq m

For identification only - Not to scale.



Floor plan produced in accordance with RICS Property Measurement 2nd Edition,  
Incorporating International Property Measurement Standards (IPMS2 Residential). © nichecom 2026.  
Produced for Hardings. REF: 1410060





11 High Street, Windsor, Berkshire, SL4 1LD,  
T: 01753 833 118 | E: [info@hardings.co.uk](mailto:info@hardings.co.uk)  
[www.hardings.co.uk](http://www.hardings.co.uk)

