

HENDERSON CONNELLAN

ESTATE AGENTS



Conway Drive, Thrapston NN14

"Designer Living"

"Designer Living"

This fabulous ,extended detached family home has been remodelled and enhanced offering a stylish, up to date interior. The kitchen/dining/family room is a great social space complimented by granite worksurfaces, flooded with natural light from vaulted ceilings and roof lights with adjoining utility room. Upstairs the bathroom has been upgraded, the five double bedrooms all have built in wardrobes, the main bedroom with stunning ensuite shower room, fifth bedroom used as a study with bespoke desk and shelving. Gas central heating with hive system and UPVC double glazing complete inside. The discreet setting is shielded by tall, manicured hedging, a private block paved driveway provides parking for four/five cars leading to a double garage with twin electric doors the rear garden is a great size enjoying a mature feel. River and Lakeside walks are within easy reach along with the heart of Thrapston with a range of amenities.

Living Room - 5.26m x 3.58m (17'3" x 11'9")

Dining Room - 3.58m x 3.07m (11'9" x 10'1")

Kitchen/Dining/Family Room - 6.86m x 5.28m (22'6" x 17'4")

Utility Room - 2.39m x 1.63m (7'10" x 5'4")

Guest WC - 2.29m x 0.91m (7'6" x 3'0")

Bedroom One - 4.32m x 3.86m (14'2" x 12'8")

Ensuite - 2.54m x 1.85m (8'4" x 6'1")

Bedroom Two - 4.11m x 3.56m (13'6" x 11'8")

Bedroom Three - 4.27m x 3.56m (14'0" x 11'8")

Bedroom Four - 3.2m x 3.15m (10'6" x 10'4")

Bedroom Five - 3.15m x 3m (10'4" x 9'10")

Bathroom - 2.77m x 1.78m (9'1" x 5'10")

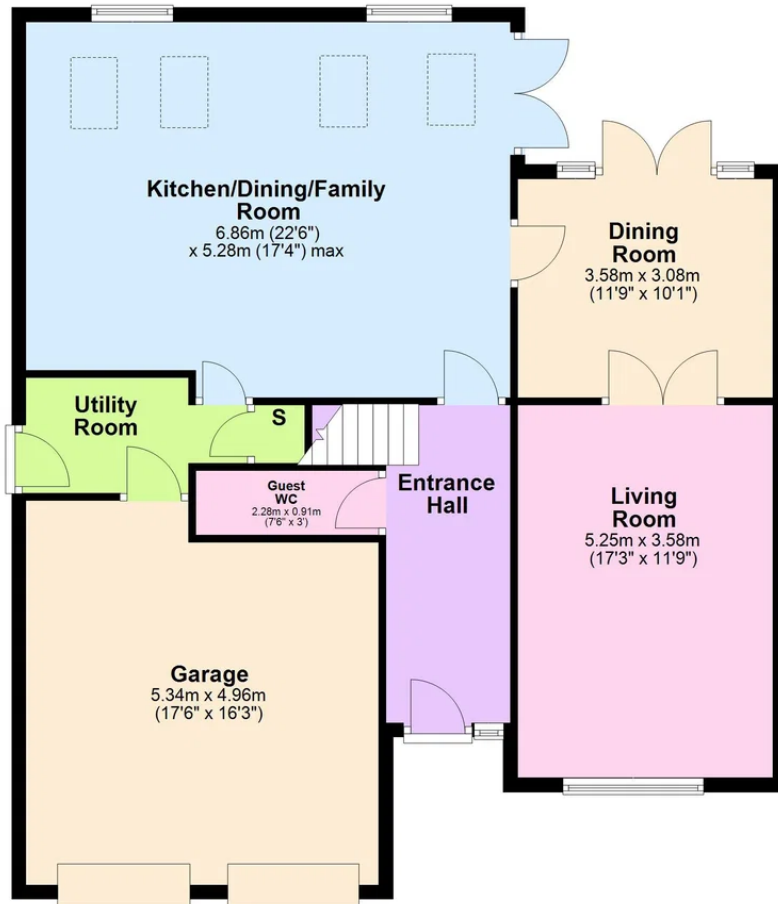
- EPC RATING: C
- COUNCIL TAX: F
- Tenure: Freehold





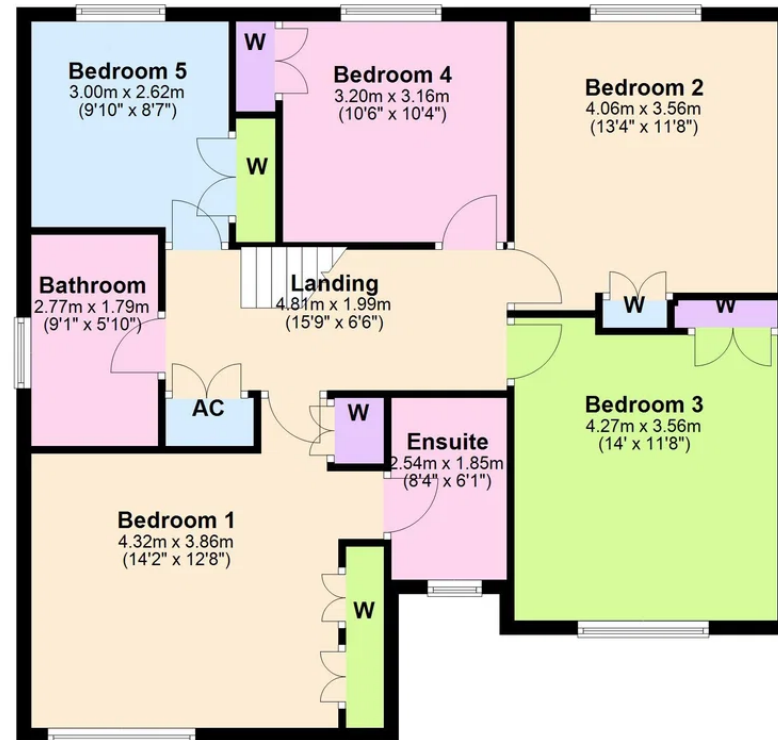
Ground Floor

Approx. 109.4 sq. metres (1177.9 sq. feet)



First Floor

Approx. 96.1 sq. metres (1034.3 sq. feet)



Total area: approx. 205.5 sq. metres (2212.2 sq. feet)