



Pennymead, Harlow, CM20 3HZ

Geoffrey Matthew Estates are pleased to offer this three bedroom, mid terraced, freehold, family home in the popular residential area of Pennymead. Requiring some updating and modernisation throughout, this property offers scope to renovate and extend (subject to planning) to your own taste and design. Close to local schools, amenities and transport links, this would make an ideal first time buy or investment.

Early viewings are highly recommended!

Offers In The Region Of £330,000

Pennymead, Harlow, CM20 3HZ



- Three Bedrooms
- In Need Of Renovation & Updating
- Mid Terrace
- Centrally Located
- Freehold
- CHAIN FREE

Entrance Hall

Kitchen

9'7 x 14'8 (2.92m x 4.47m)

Lounge

11'3 x 21'2 (3.43m x 6.45m)

First Floor Landing

Bedroom

9'9 x 12'5 (2.97m x 3.78m)

Bedroom

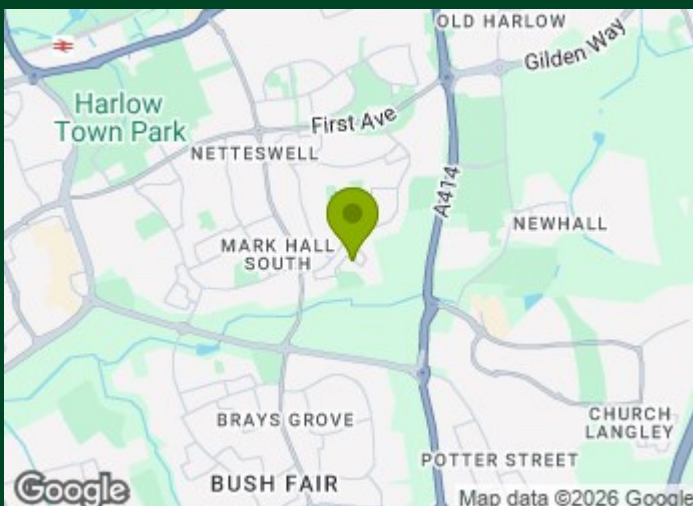
9'7 x 10'1 (2.92m x 3.07m)

Bedroom

8'6 x 8'7 (2.59m x 2.62m)

Bathroom

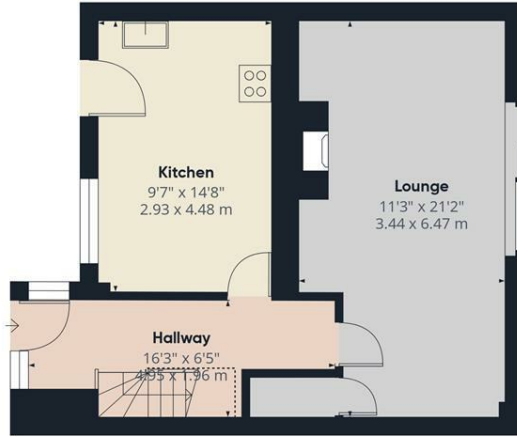
5'7 x 7'7 (1.70m x 2.31m)



Directions



Floor Plan



Floor 0



Floor 1



Approximate total area⁽¹⁾
 870 ft²
 81 m²

Reduced headroom
 13 ft²
 1.2 m²

(1) Excluding balconies and terraces

Reduced headroom
 Below 5 ft/1.5 m

Calculations reference the RICS IPMS 3C standard. Measurements are approximate and not to scale. This floor plan is intended for illustration only.

GIRAFFE360



Council Tax Details

Harlow Band C

These particulars, whilst believed to be accurate are set out as a general outline only for guidance and do not constitute any part of an offer or contract. Intending purchasers should not rely on them as statements of representation of fact, but must satisfy themselves by inspection or otherwise as to their accuracy. No person in this firm's employment has the authority to make or give any representation or warranty in respect of the property.

